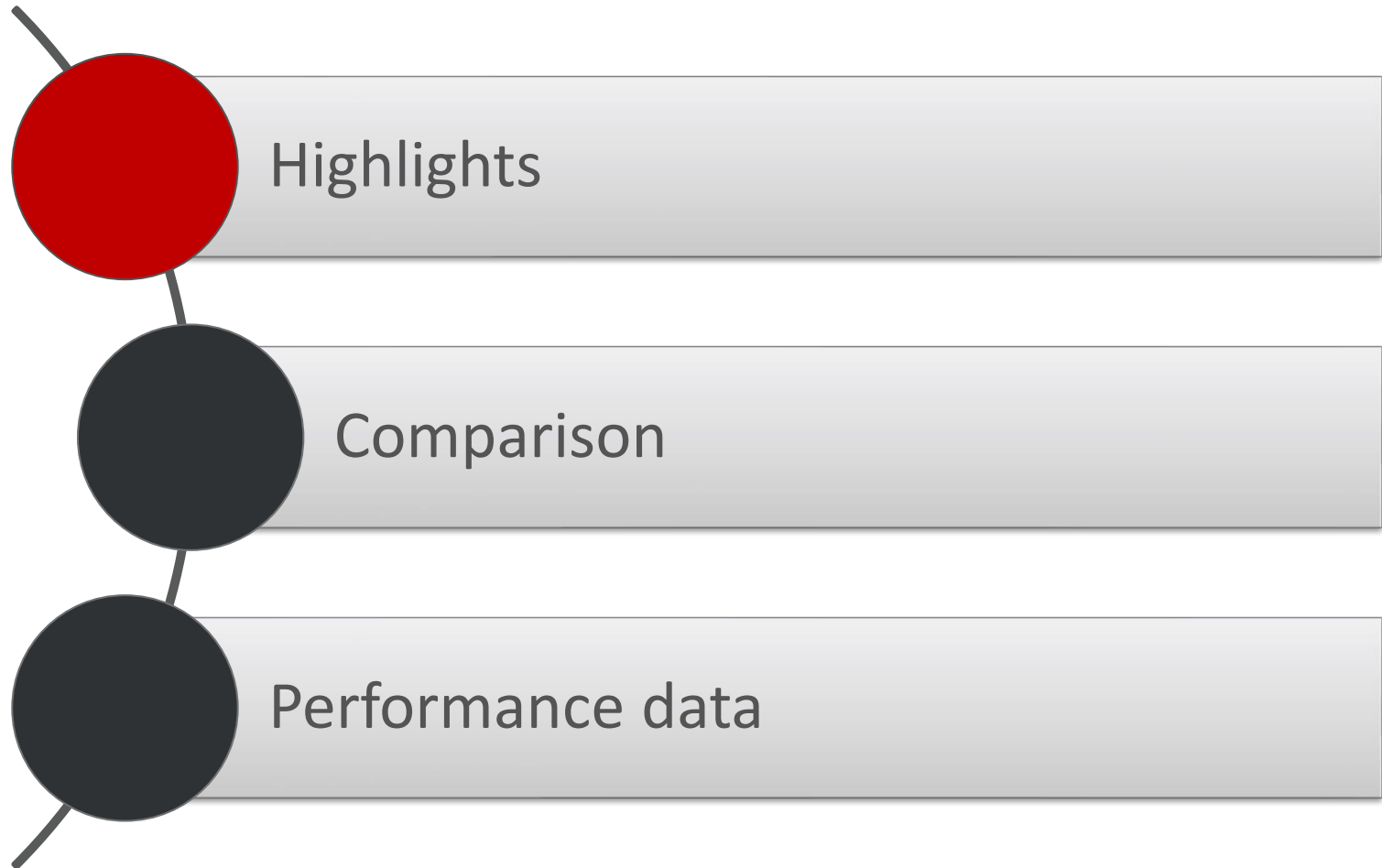


KTEG

HITACHI Systempartner.



KMC600P-7

Walkaround

High Reach Boom

BQC Boom Quick
Connect System

HD Counterweight
incl. water tank

30° Tilt Cabin

Bucket Cylinder Protection

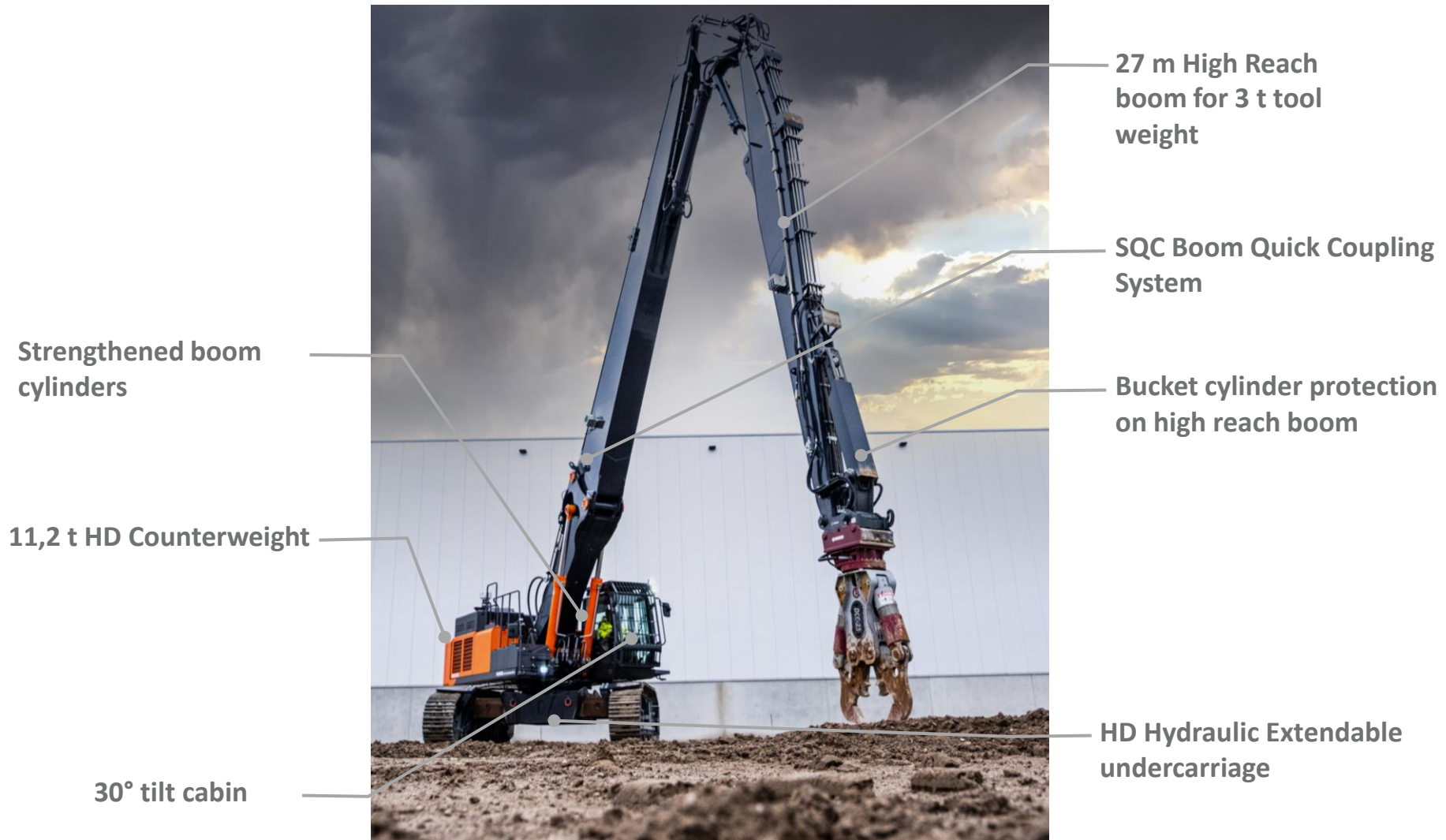
TriTec Boom
Cylinder System

HD Hydraulic Extendable
undercarriage



KMC500S-6

Walkaround



KMC540S-6

Walkaround



3 m extension piece

11,2 t HD Counterweight

Strengthened boom
cylinders with optimised
hoist-angle

total 30 m High Reach boom

SQC Quick Coupling System

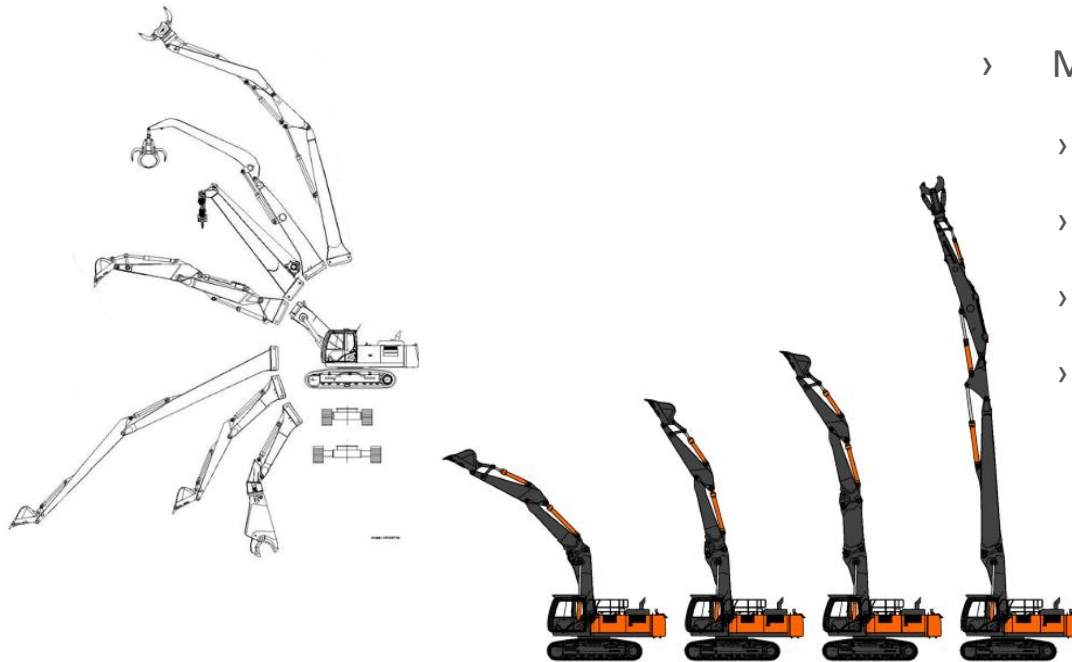
Bucket cylinder protection
on high reach boom

30° tilt cabin

HD Hydraulic Extendable
undercarriage

Highlights

Multi Carrier Concept



› Multi-Carrier Concept

- › Huge range of selectable booms
- › Flexibility to be up to any task
- › Productivity on every height level
- › Interchangeability of old and new fronts

Example Interchangeability

- › After 10.000 operating hours, there is the wish for a new machine
- › The two fronts, which have only 5.000 hours each can be kept
- › Only new base machine is necessary
- › **Lower cost of ownership over a long time period**

Example flexibility

- › Demolition with High-Reach front
- › Pulverising and Earthmoving with short front
- › Use of hydraulic hammer to demolish fundaments with short front

Highlights

Boom Quick Connect system (KMC600P)



KTEG Boom Quick Connect system (BQC)

- › Fully hydraulic boom change
- › No need to leave the cabin
- › Boom change **within minutes**
- › No time loose due to boom change

Highlights

Standard Quick Connect system (KMC500S & KMC540S)



KTEG Standard Quick Connect system (SQC)

- › Hydraulic in-pin cylinders to connect the front hydraulically
- › Mechanical connection of the hydraulic lines by hand
- › Leakless *Faster-Quick* Couplings
- › Working platform for secured boom change

Highlights

Undercarriage



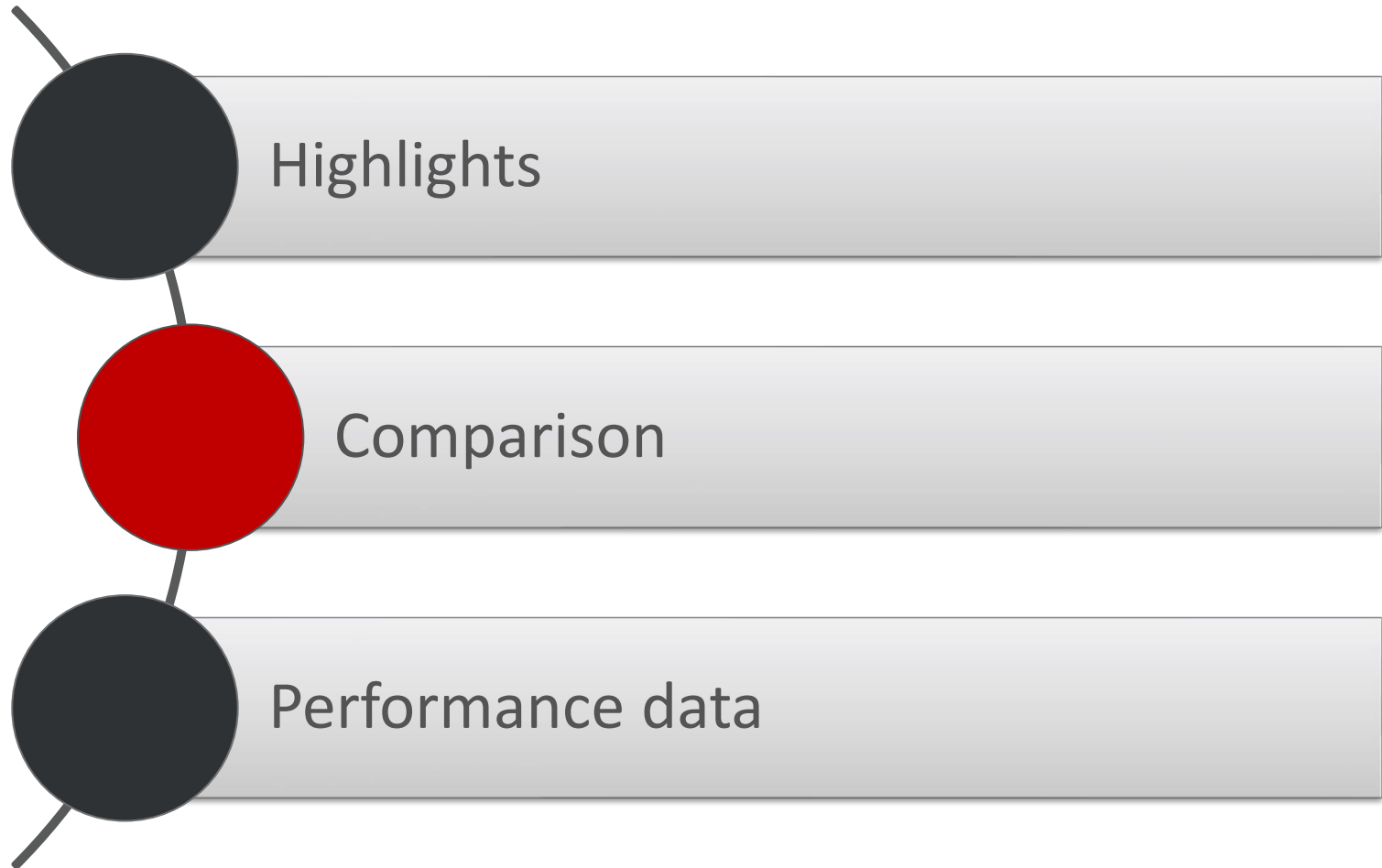
- › Hydraulic extendable undercarriage
- › High stability in working position
- › Reduction of the transport width
- › Machine can be made transport-ready within short time

Highlights

TriTec (KMC600P)



- › Changeable cylinder mode
- › Two-Cylinder Mode = normal speed and lifting capacity
- › Three-Cylinder Mode = Increase of the lifting capacity of up to 50 %



Comparison KMC500S – KMC540S – KMC600P

Machines, basing on **ZX490** upperstructure

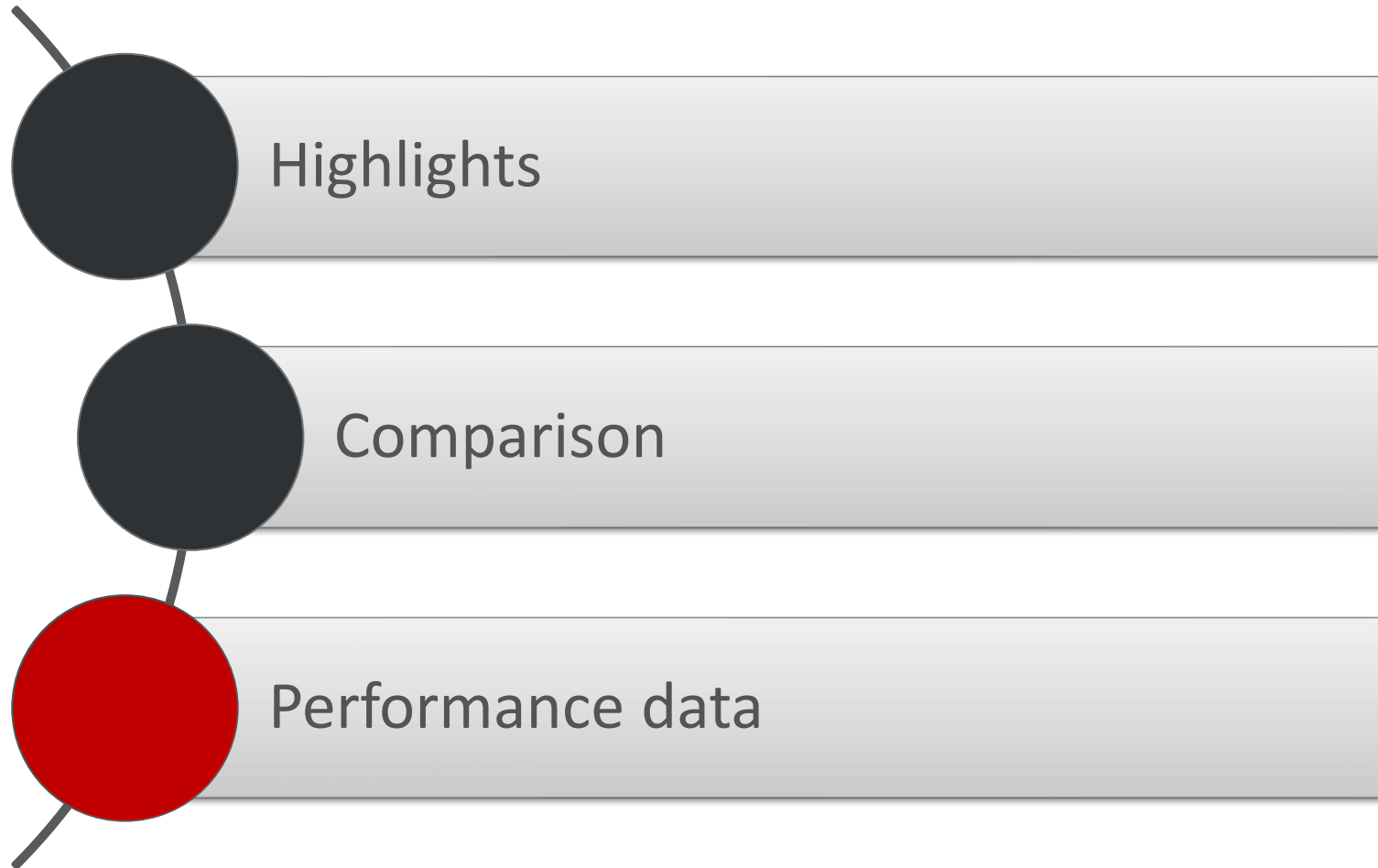
- › KMC500S as entry level model up to 27 m
- › KMC540S as upgraded model up to 30 m
- › KMC600P as machine for experts up to 34 m



Comparison KMC500S – KMC540S – KMC600P

Technical

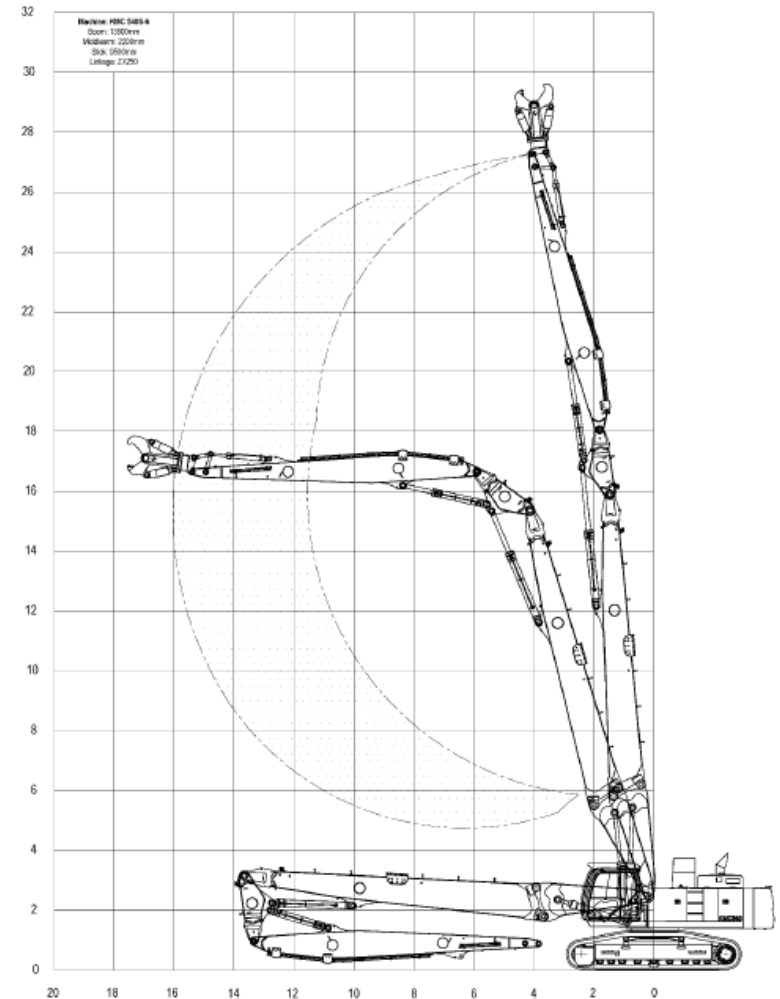
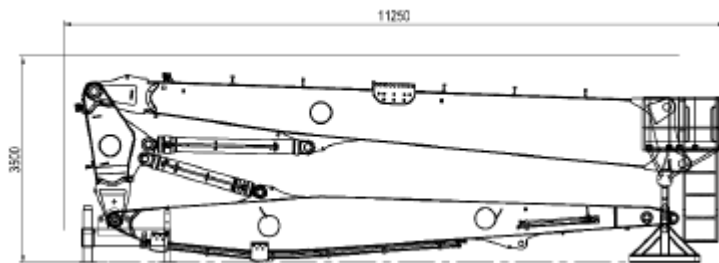
	KMC500S	KMC540S	KMC600P
Hydraulic extendable undercarriage length	4,47 m	4,83 m	5,24 m
Hydraulic extendable undercarriage width	3 m/ 4,3 m	3 m/ 4,3 m	3,5 m/ 4,5 m
Boom Quick Connect System	Hydraulic coupling of the booms, coupling of hydraulic lines by hand		Full hydraulic coupling of the booms and the hydraulic lines
Counterweight	KTEG HD counterweight 11,2 t	KTEG HD counterweight 11,2 t	KTEG HD counterweight 11,2 t + removable 3,2 t
Hoist cylinder	Strengthened KTEG hoist cylinders	Strengthened KTEG hoist cylinders with optimised hoist angle	TriTec system with three hoist cylinder
Max reach	27 m/ 3 t	30 m/ 3 t	26 m/ 4 t; 30 m/ 3,5 t;



KMC500S

High Reach 27

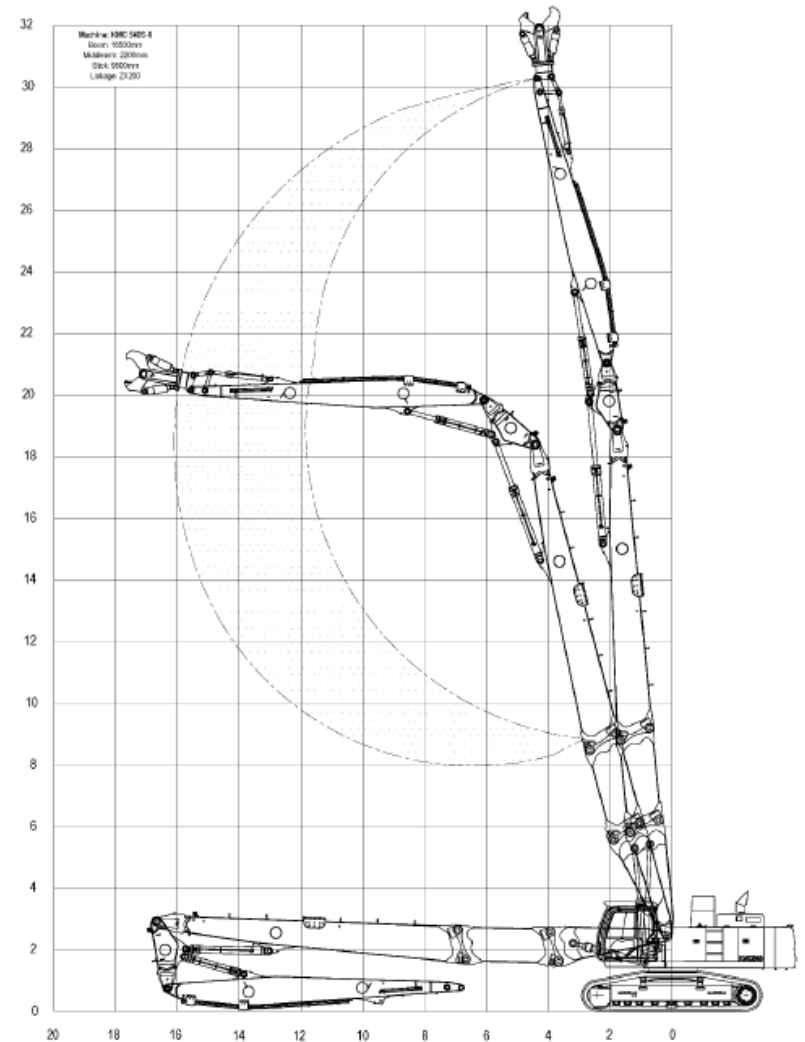
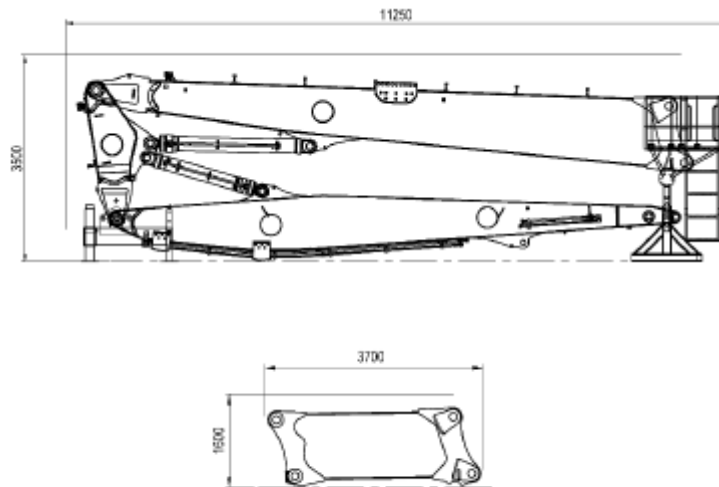
- Pin-Height 27 m
- Tool weight incl. Quick coupler 3 t
- Transport weight of front 12 t



KMC540S

High Reach 30

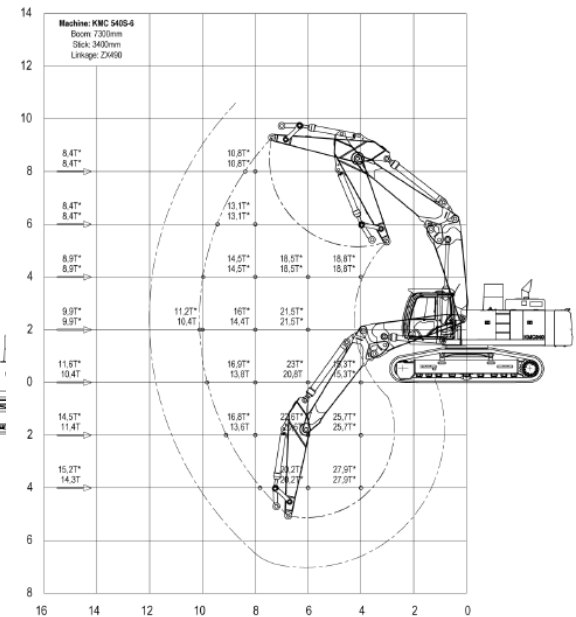
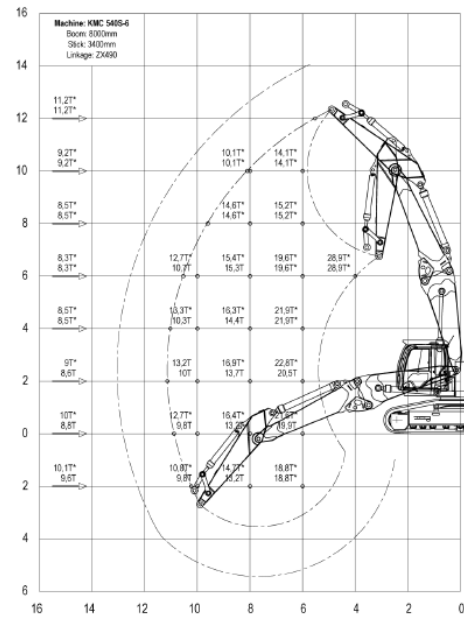
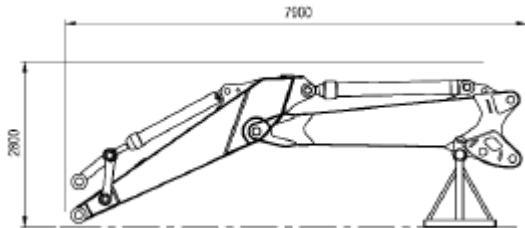
- Pin-Height 30 m (incl. extension)
- Tool weight incl. Quick coupler 3 t
- Transport weight of front 12 t
- Transport weight extension 3 t



KMC500S & KMC540S

2 position digging front

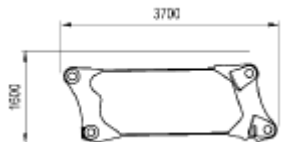
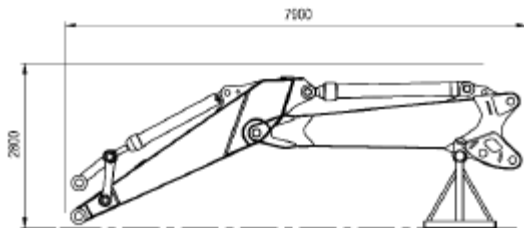
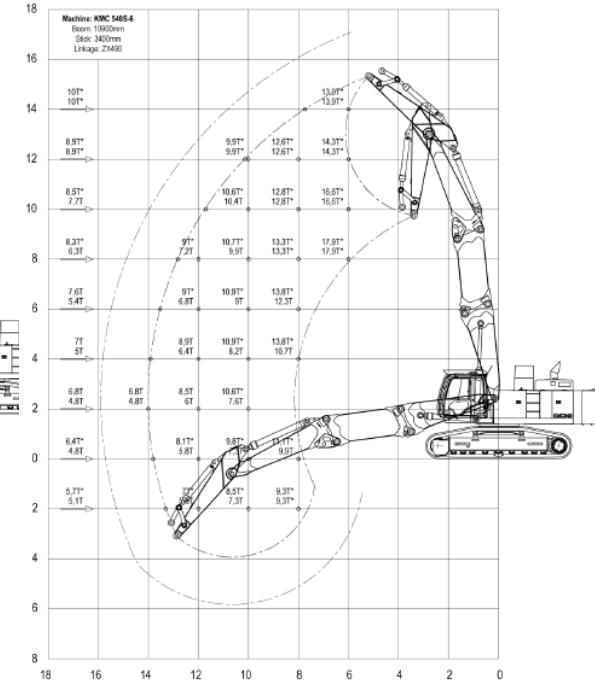
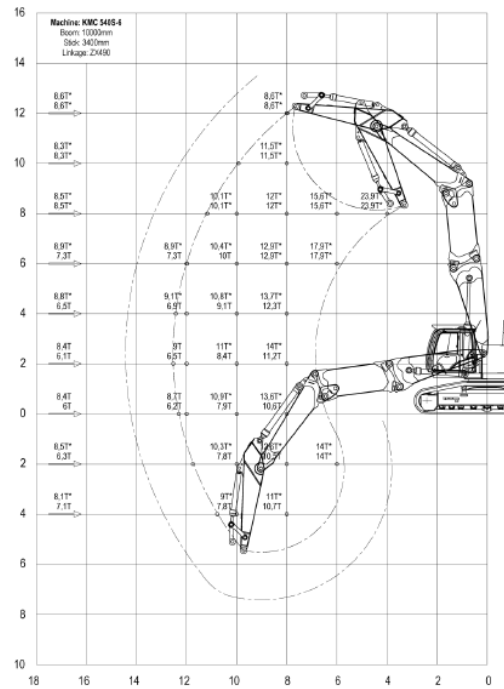
- › Straight position for demolition work
- › Bent position for digging or earth moving work
- › Pin-Height in straight position 12,5 m
- › Pin depth in bent position -5 m
- › Machine can be transported with attached front
- › Transport weight of front 6 t



KMC500S & KMC540S

2 position digging front with extension

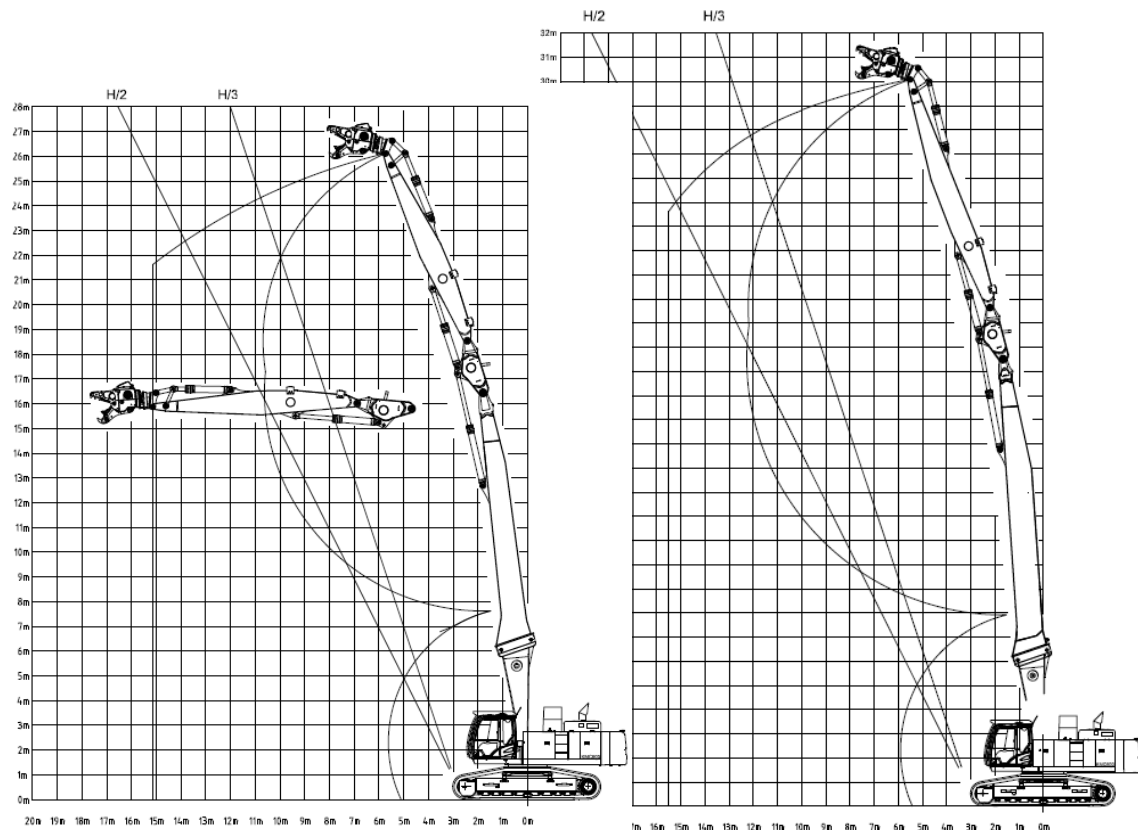
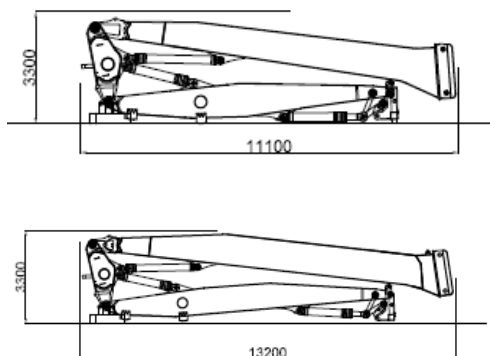
- › Straight position for demolition work
- › Bent position for digging or earth moving work
- › Pin-Height in straight position 15 m
- › Pin depth in bent position -6 m
- › Machine can be transported with attached front
- › Transport weight of front 6 t
- › Transport weight of extension 3 t



KMC600P

High Reach 26/ 30

- › Pin-Height 26 m/ 30 m
- › Tool weight incl. Quick coupler 4 t/ 3,5 t
- › Transport weight of the front 13,5 t/ 15 t



KMC600P

Monoboom/ Multi Use adjustable front

- › Pin-Height 11 m/ 15 m
- › Attachable weight following load range table
- › Transport weight of the front 5,2 t/ 8 t

