

KMC 1200



Engine

Engine model:
Isuzu AQ-6WG1XASA-01
Net Power – ISO14396:
382 kW (512 hp)

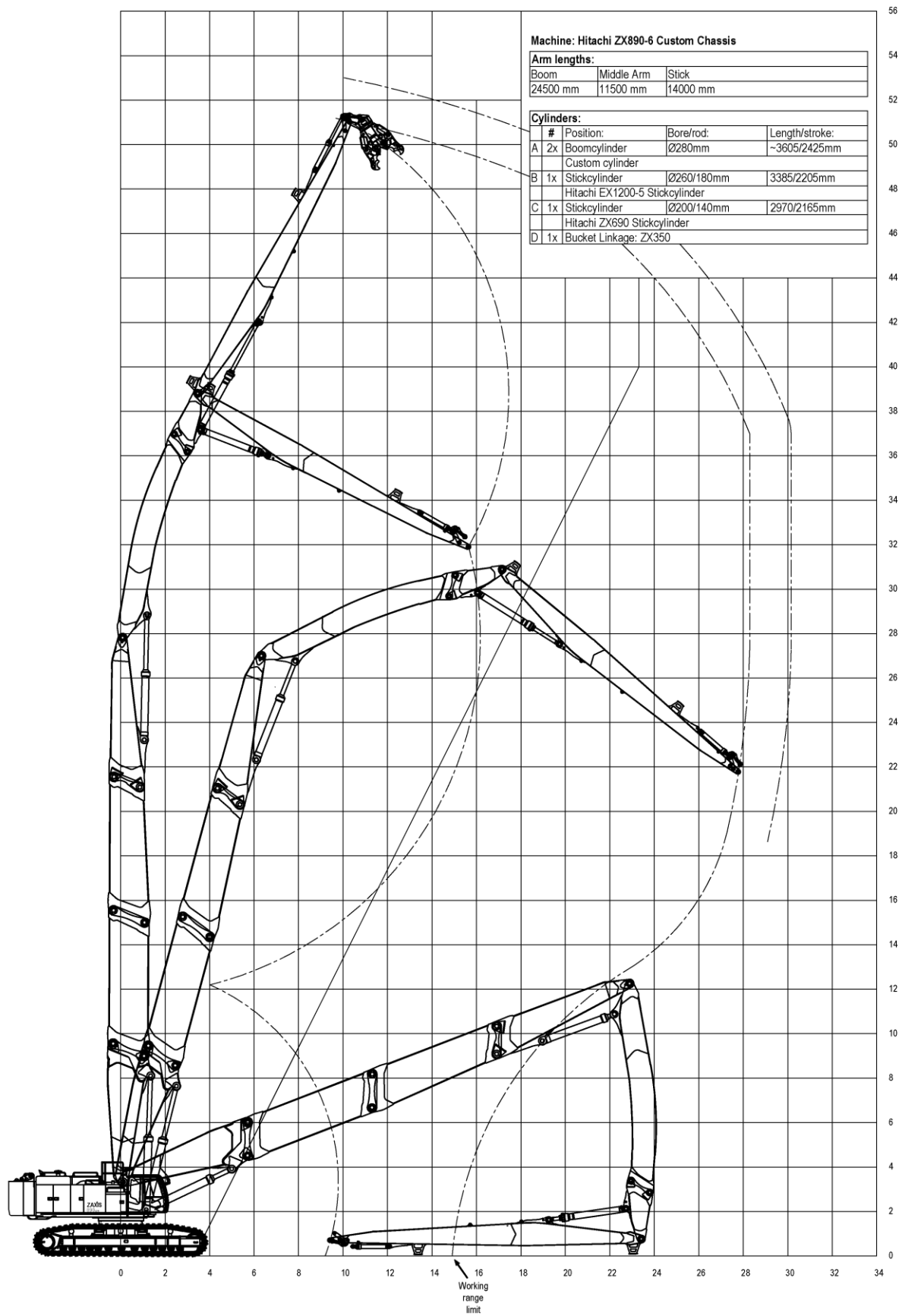
Weight

Operating weight:
approximately 170.000 kg

Working height

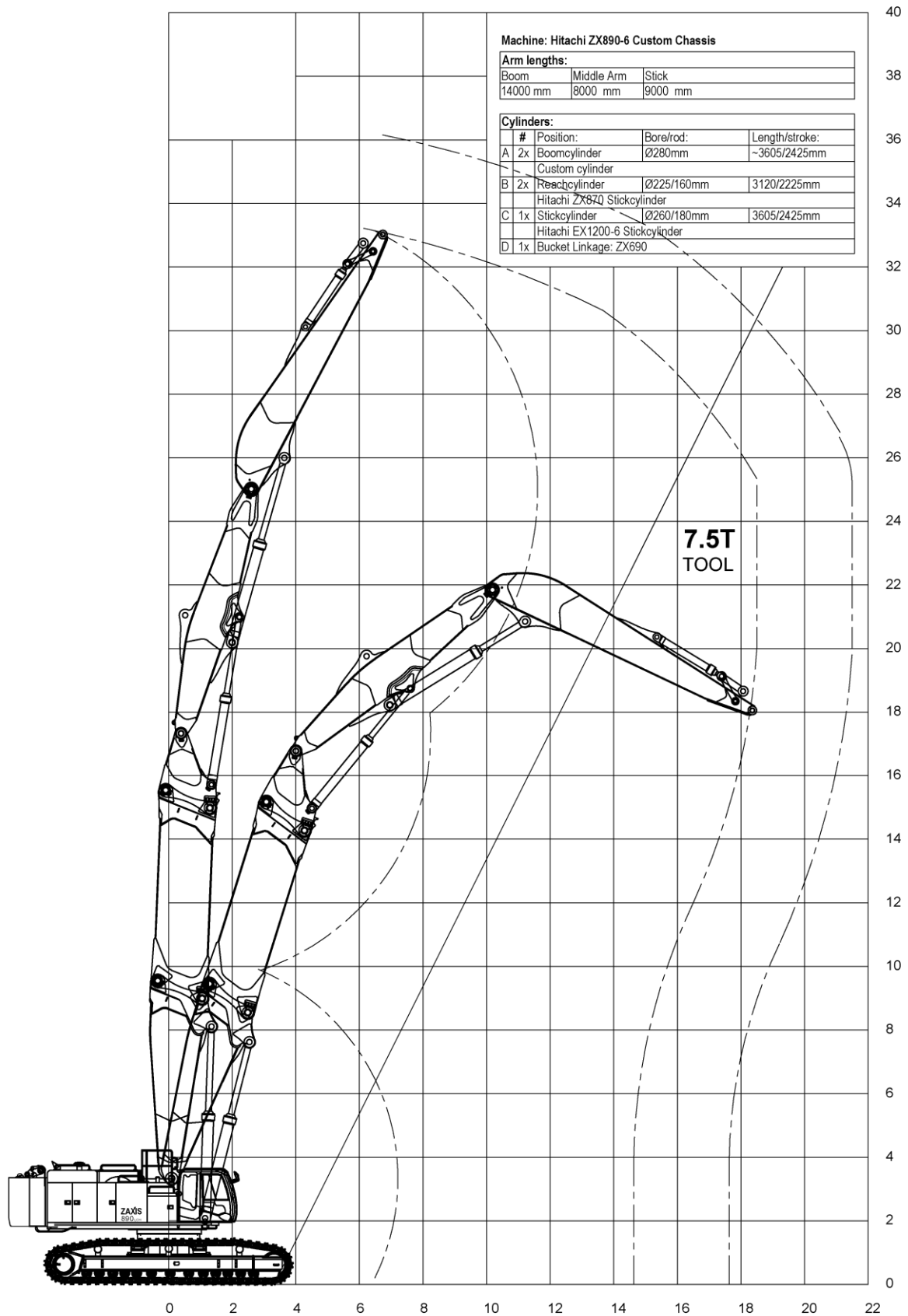
Maximum pin height:
51 meter

Pin height 51 meters



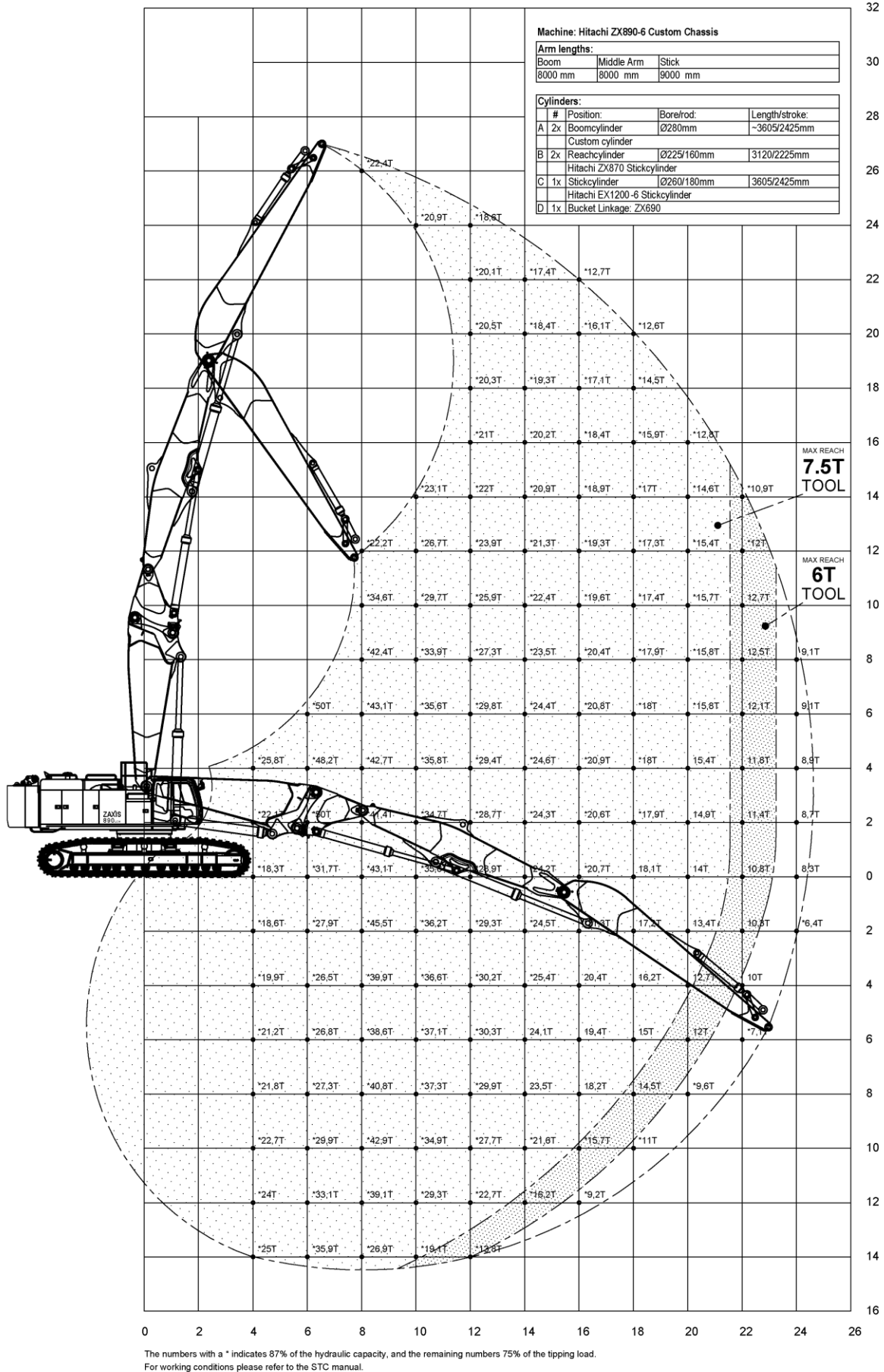
Max. Tool Weight: 3000kg

Triple Extended 9.0m Stick



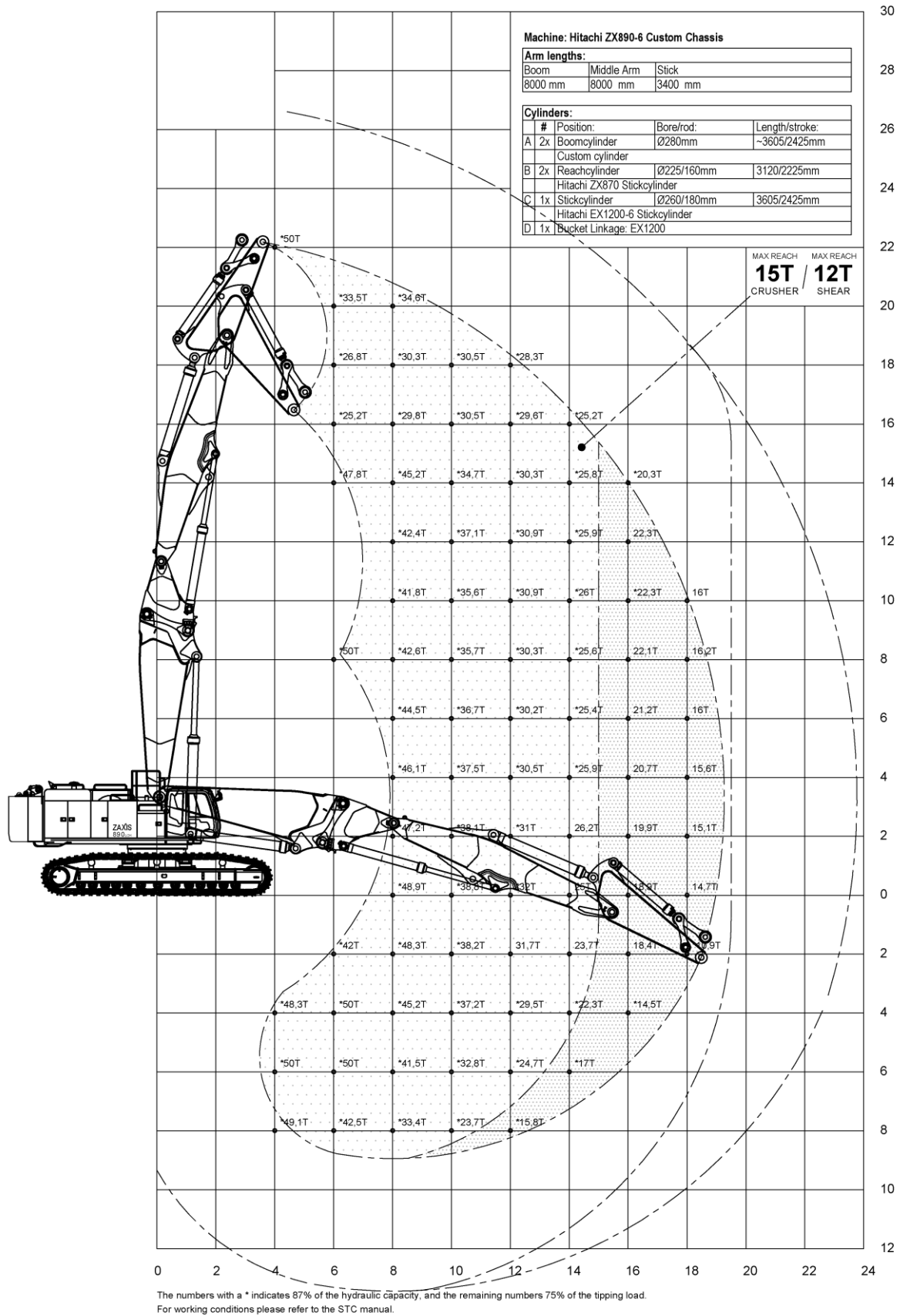
Specifications are subject to change without notice.

Triple 9.0m Stick



Specifications are subject to change without notice.

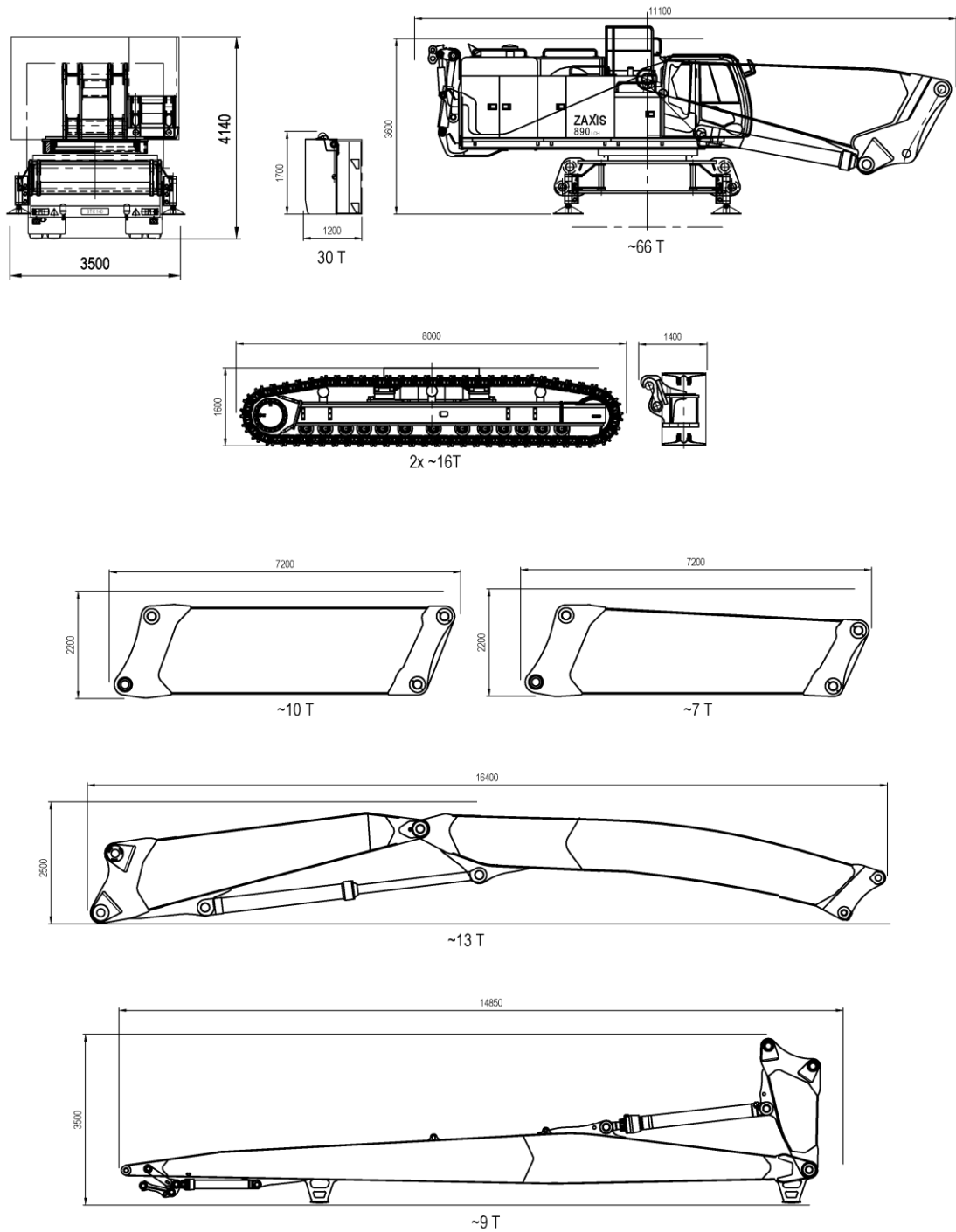
Triple 3.4m Stick



Specifications are subject to change without notice.

Transport

TRANSPORT DIMENSIONS



Lengths and weights are preliminary

Specifications are subject to change without notice.

Transport

TRANSPORT DIMENSIONS

