

HITACHI

Reliable solutions

Hitachi breakers

High-performance hydraulic breakers
approved by Hitachi for a wide range
of Zaxis excavators



Perfect fit

Hitachi has introduced a range of hydraulic breakers that are perfectly suited to its Zaxis mini, medium and large excavators. They can be fitted and maintained professionally by authorised Hitachi technicians to ensure a high level of performance. Investing in Hitachi-approved attachments for your excavator brings you peace of mind from dealing with one brand of construction equipment through your local Hitachi dealer.

High quality

The materials and the production process used to manufacture Hitachi breakers are of the highest quality. As a result, the breakers are lightweight, with higher-than-ever impact energy.

User-friendly

The slim design of the breakers ensures easy accessibility in demolition and quarrying applications. It provides high efficiency in trench work. The top damper also reduces noise and vibration.

Improved durability

Hitachi breakers are designed to work longer and more efficiently than other brands on the market. The floating rod

seal minimises dust intake and results in an extended lifetime.

Easy to maintain

The mono-block cylinder has been specially developed to reduce the number of parts in the attachment – No through bolts are used, but this is not applicable for F6, F9 and the FXJ770 en FXJ1070 models are required, for example. Parts such as the rod pin are durable and easy to replace.

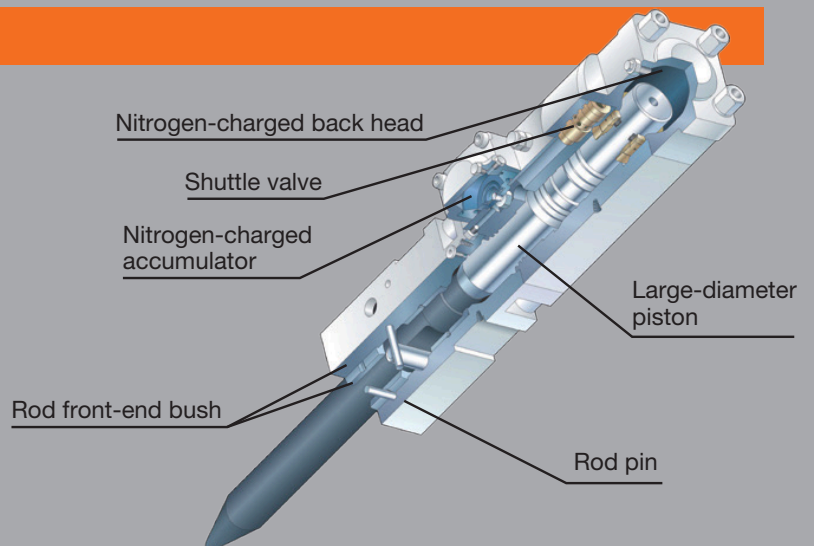
Low cost of ownership

High-quality materials ensure the breaker has a long lifetime, which means reduced maintenance costs and fewer replacement parts. This also brings the added benefit of minimal downtime.



Features and benefits

- Nitrogen-charged back head for superior energy transfer.
- Large-diameter piston for increased impact energy.
- Front head design includes replaceable thrust bushing for extended service life.



Valve design reduces hydraulic fluid temperatures, which increases performance.

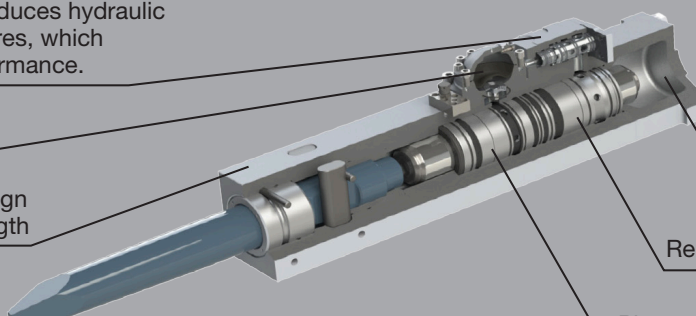
Accumulator

Square body design for superior strength

Increased back head pressure and large-diameter piston

Replaceable cylinder liner

Piston design increases surface contact to working steel



Specifications



Excavator	Breaker	Machine class (tonnes)	Weight (kg)	Tool diameter (mm)
ZX10	FX15	0.5-1.5	69	36
ZX17/19	FX25	1-2.5	112	45
ZX26/33	FX35	1.5-4	157	52
ZX38	FX45	2.5-5.5	208	60
ZX48/55	FX55	4.0-7.0	280	68
ZX65	F6LN	5.0-10	350	75
ZX85	F9LN	9-16	535	90
ZX130	FXJ125	12-21	850	110
ZX160/80	FXJ175	43-55	1000	120
ZX210	FXJ225	16-24	1600	135
ZX240	FXJ275	20-30	1800	140
ZX350	FXJ375	25-42	2525	155
ZX490	FXJ475	33-55	3250	170
ZX690	FXJ770	44-75	4800	190
ZX890	F100XP	65-100	6500	210

			FX15	FX25	FX25 S	FX25 XS	FX35	FX35 - S	FX35 - XS	FX45	FX45 S	FX45 XS	FX55	FX45 S	FX45 XS
Operating weight, P&B and FT1)		kg	69	101			146			187			245		
Operating weight, 1) S and XS 2)		kg		112			157			208			280		
Height with rod, pin and bush		mm	924	1030			1172			1285			1388		
Height with rod, S	S	mm			961			1062			1173			1276	
Height with rod, XS	XS	mm				1015			1116			1227			1330
Operating pressure	min	Mpa	10	10			12			12			12		
	max		14	14			16			16			16		
Oil flow	min	l/min	10	18			24			30			40		
max			28	35			52			60			85		
Impact rate 1/min	min		600	600			600			600			500		
	max	bpm	1500	1500			1300			1100			1100		
Rod diameter Ø		mm	36	45			52			60			68		
Effective length Rod		mm	234	293			322			355			378		
Weight Rod		kg	2,6	5			8			11			15		
Hose inner dia Ø HD, ND		mm	9	12			12			12			12		
Guaranteed noise level	S	dB(A)			112			119			120			119	
	XS	dB(A)				110			117			117			116
Base machine weight		t	0.5-1.5	1-2.5			1.5-4			2.5-5.5			4-7		

Specifications

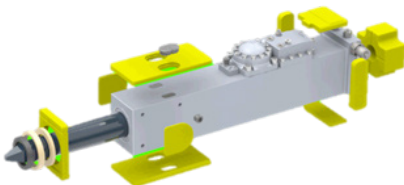
F6/F9LN for ZX65 and ZX85 excavators

			F6LN	F9LN
Operating weight		kg	365	535
Height with rod		mm	1400	1595
Operating pressure		Mpa	10	12
	min		16	17
Oil flow	max	L/min	50	45
	min		150	150
Impact rate (frequency)	max	bpm	650	400
	min		1600	1400
Impact energy	max	joule	884	1305
Rod diameter		mm	75	90
Effective rod length		mm	450	500
Rod weight (standard)		kg	21.5	35.5
Hose inner diameter pressure/return		mm	12	19
Base machine weight		t	5.9-9	6-12



FXJ series for ZX130 to ZX690 excavators

			FXJ125	FXJ175	FXJ225	FXJ275	FXJ375	FXJ475	FXJ770
Operating weight		kg	850	1000	1600	1800	2600	3200	4800
Height with rod		mm	2005	2043	2411	2468	2715	2892	3390
Operating pressure	min	Mpa	16	16	16	16	16	16	16
	max		18	18	18	18	18	18	18
Oil flow	min	l/min	70	100	125	145	170	200	250
	max		120	160	190	220	260	300	340
Impact rate	min	bpm	400	450	350	350	300	250	250
	max		1000	900	850	620	550	450	420
Impact energy		joules	2320	3610	4580	5120	7310	9620	11850
Rod diameter		mm	110	120	135	140	155	170	190
Effective rod length		mm	640	620	650	680	715	720	860
Rod weight		kg	69	81	120	143	167	229	315
Hose inner diameter		mm	19	19	25	25	25	32	32
Sound power level		dB	125	118	120	121	121	121	122
Guaranteed sound power level		dB	129	120	121	122	123	124	124
Base machine weight		t	9-16	12-21	16-24	18-30	25-42	33-55	44-75



The FXJ series is encased in plastic silence blocks to reduce noise and vibration, and minimise wear.

HITACHI

Reliable solutions

To find out more about Hitachi
breakers for Zaxis excavators,
please contact your local dealer or visit
www.hitachicm.eu



© Hitachi Construction Machinery (Europe) NV (HCME).
All rights reserved. Reproduction in whole or in part is
forbidden except with the written permission of HCME.
While every effort is made to ensure the accuracy of
information published, HCME is not responsible for
inaccuracies or omissions. All views expressed are not
necessarily those of HCME.

Hitachi Construction Machinery (Europe) NV
Siciliëweg 5 – haven 5112, 1045 AT Amsterdam
PO Box 59239, 1040 KE Amsterdam, The Netherlands
T: +31-(0)20 44 76 700 F: +31-(0)20 33 44 045
www.hitachicm.eu