



THE AMMANN GROUP MAGAZINE



ANSWERING THE ROLL CALL

Ammann ARP 75 Conquers Jobsite Challenges

H2 BREAKTHROUGH

Ammann Unveils First
All-Hydrogen Burner

Page 4

E-DRIVE DEMOS

Electric Roller Passes
Tough Tests in the Field

Page 10

COMPACT CONCRETE PLANT

Flexibility Helps Firm
Quickly Gain a Foothold

Page 12

NEW PRODUCTS

Innovations in Steering
And Sustainability

Page 22

AMMANN'S WOOD DUST BURNER



SUSTAINABILITY
@AMMANN

UNRIVALED MASTERS

Pioneering sustainable combustion technology | Wood dust utilization
Limiting CO₂ through innovation | Years of use | Dozens of systems

Ammann
wood dust burners
**OVER
15 MILLION
TONS**
of asphalt produced
worldwide ... and
counting

A RENEWABLE SOURCE

The Ammann wood dust burner is growing in popularity. It's easy to see why:

- Wood dust can be locally sourced, reducing transport costs.
- It's a renewable energy source.
- The burner transforms a waste material into fuel.
- It's a proven process, with millions of tonnes of mix produced by asphalt plants equipped with Ammann wood dust burners.

The Ammann wood dust burner can be retrofitted on plants provided by Ammann or competitive manufacturers.



TABLE OF CONTENTS

- 4 GREEN PLANT DAYS
Sustainable strides showcased
- 6 FULL OF CONTRADICTIONS
Ammann ARP 75 proves its versatility
- 8 A 'MOST LIVABLE' CITY
Light equipment turns dream into reality
- 10 ROAMING – AND ROLLING
E-drive compactor tested at multiple jobsites
- 12 WHEN TYPE, VOLUME VARY
Concrete plant meets differing needs
- 14 HEALTHY LIFESTYLES
Light equipment compacts recreational trails
- 16 NEW FACILITY IN CHINA
Factory hailed as sustainability win
- 18 PRIMED FOR EXPANSION
Mobile plant offers opportunity
- 20 RETROFIT BRINGS NEW LIFE
Control system upgrade does the trick
- 21 THE GRASS IS GREENER...
...And flatter, too, thanks to tandem roller
- 22 PRODUCT INTRODUCTIONS
Small machines see big improvements
- 25 PERFECT FIT
Light rollers tackle NZ jobsites
- 26 THE RIGHT PATH
Compact paver impresses crew
- 27 AMMANN AROUND THE WORLD
An overview of news and events

SUSTAINABILITY AND PROFITABILITY

DEAR CUSTOMERS

I am delighted to share an important update from Ammann: We have signed an agreement for the potential acquisition of the ABG paving business. This promising development is set to expand our product range and distribution network, directly benefiting you with access to more comprehensive and advanced solutions.

Our commitment to enhancing your experience and meeting your diverse needs in the road construction industry remains our top priority. We will keep you updated with more information in the coming weeks and months.

Recently, at Ammann Green Days in Verona, we showcased several ground-breaking sustainability advancements. These innovations align with the discussions we had with many of you about a critical industry challenge: achieving a balance between sustainability and profitability. At Ammann, we are committed to this balance, understanding that the road construction industry must be both environmentally and economically sustainable.

This magazine issue showcases how our technological innovations are designed to not only benefit the environment, but also to enhance the profitability of your business. I hope you find enjoyment and valuable insights in these pages.

Hans-Christian Schneider
CEO Ammann Group

AMMANN GREEN DAYS WELCOMES CROWD



SUSTAINABILITY

HYDROGEN BURNER, REGENERATING FILTER INTRIGUE VISITORS

Sustainable asphalt-mixing plant technologies, including a new hydrogen burner and a self-cleaning VOC filter, caught the attention of the 350 visitors who attended Ammann Green Days in Verona, Italy, from 23-27 October.

"It was apparent to all our guests that Ammann is committed to environmentally friendly asphalt production," said Marzio Ferrini, Ammann's commercial marketing and special plants director. "Ammann wanted to put the customers at the centre of this event and show them the solutions we have developed."

The occasion included the announcement of three significant emissions abatement efforts: the H₂ hydrogen burner, VOC Reduction Device (VRD) and Blue Smoke Treatment (BST). The technologies are available on new plants and as retrofits – on plants provided by Ammann or other manufacturers.

"The customers responded very positively to these eco-conscious advancements," Ferrini said. "They were very impressed by what they saw."

Several new asphalt-mixing plant models that utilise these innovations were also introduced.

Ammann has been committed to green mix production for decades, but the event represented a new sense of urgency on the sustainability front.

"We recognise that more needs to be done, and we are addressing emissions issues at every step of production," Ferrini said. "We are transparent about that."

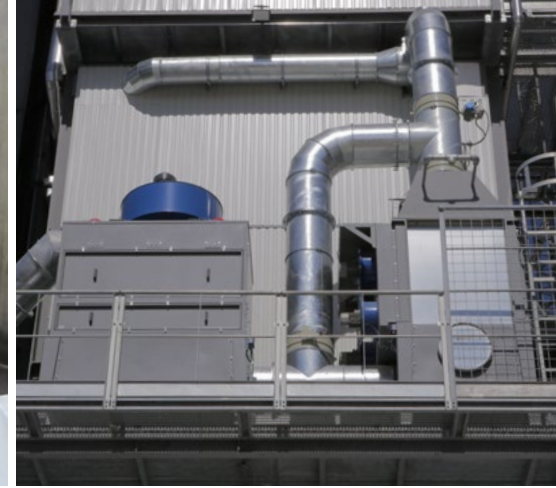
**ALL WERE IMPRESSED
BY THIS CUTTING-EDGE
FILTRATION SYSTEM.
IT IMPROVES PLANTS
WITHOUT HAVING TO
DISMANTLE THEM.**



Green Days
video



Green Days



H2 HYDROGEN BURNER

The Ammann H2 is the first asphalt-mixing plant burner on the market capable of utilising 100% hydrogen. It eliminates all CO₂ emissions associated with the burner.

“There were many questions about the hydrogen burner,” Ferrini said. “Customers were keenly interested in this technology and the plants that utilise it.”

The performance of the Ammann H2 is comparable to a fossil-fuel powered burner. Yet the H2 is easier to regulate, with better heat exchange in the dryer and an overall cleaner process.

The H2 is capable of burning other fuels if desired.



VOC REDUCTION DEVICE

A new, advanced filtration system from Ammann is able to remove a significant level of emissions during asphalt production – and clean itself, too.

VRD reduces volatile organic compounds (VOCs), odours and other organic carbon emissions. It is the first technology on the market able to self-clean; no filter replacements are needed.

With VRD, neither time nor money is spent on filter replacements. Plant uptime is optimised as well.

VRD is a modular, stand-alone solution compatible with virtually every type of asphalt-mixing plant – whether provided by Ammann or another manufacturer. It lowers total organic carbon (TOC), which contains VOCs, by as much as 70% under common working conditions.

“All were impressed by this cutting-edge filtration system,” Ferrini said. “It improves plants without having to dismantle them.”

Many customers said they will incorporate VRD in their existing plants, Ferrini said. “Doing so will help keep their plants in compliance with tightening emissions standards,” he said.

BLUE SMOKE TREATMENT

BST dramatically decreases the emissions that result while loading asphalt mix to trucks. It doesn’t require costly confinement equipment and is inexpensive to operate, too.

BST captures fumes that previously would have escaped during loading and redirects them to a multi-stage filtration system. The filters remove the oily particles, and the remaining gases are routed to the combustion chamber. This lowers costs because the captured air is already heated.

BST can be specified during the purchase of a new plant or added as a retrofit. It is compatible with all asphalt plants on the market, regardless of the manufacturer.

Ammann also announced it has expanded its line of asphalt-mixing plants. The plants will be able to leverage the new green technologies.

“These new solutions are big steps, but we strive each and every day to provide our customers with sustainability that improves the world around us – and profitability that makes their businesses viable,” Ferrini said.



ONE AMMANN ROLLER MEETS MANY JOBSITE NEEDS



PRODUCTIVITY



ARP 75

SPECIFICATIONS

EU Stage V, U.S. EPA Tier 4 Final

Operating weight

7375 kg (16259 lb)

Drum width

1500 mm (59.1 in)

Engine Kubota V3307-CR-T

54.4 kW (74 HP)



ARP 75

PROJECT DEMANDS DEEP COMPACTION AND MANOEUVRABILITY

A jobsite at the supermarket in Niederkassel, Germany, was full of contradictions.

The task was paving and compaction of the market's parking lot. Portions of the project were in wide open spaces where productivity was needed.

Yet work was required near the market's entrance, close to obstacles. That meant the roller needed to offer the versatility to be productive in open spaces yet manoeuvrable in tight spaces.

The base layer of 12 cm necessitated deep compaction output – all while negotiating the close spaces. The base layer consisted of warm mix (AC32 TS), so the compaction window was tighter as well.

The Ammann ARP 75 Pivot-Steer Tandem Roller met all the challenges.

The machine has an operating weight of 7375 kg, the first step toward delivering the necessary force.

The roller also has the output needed. Standard is a two-stage vibratory system with a multiple range of frequencies that helps operators precisely adjust compaction output.

It offers two frequencies (38-48 Hz and 45-55 Hz), two amplitude choices (0,68 mm and 0,39 mm) and two centrifugal options (58-92 kN and 47-70 kN).

These settings ensured the roller brought the output necessary to reach the 12 cm depth, yet also could be adjusted when working close to the building.

The Ammann ARP 75 has pivot steering with split drums, enabling precision and reducing shear forces. The roller also utilises advanced steer-by-wire machine control, which is extremely responsive.

Another handling feature is machine fingertip steering (FTS). FTS replaces the traditional steering wheel and allows operators to keep both hands on the armrests for improved comfort. FTS also

offers advanced palm support that prevents fatigue and injuries from repetitive motions.

An advanced drive lever with intelligent functions ensured the smooth starts and stops that were essential when paving the market's parking lot.

Operators who used the Ammann ARP 75 on the supermarket jobsite praised the machine for:

- Its intuitive nature and easy control. "It took us just 10 minutes to learn how to use the main functions," one operator said.
- Comfortable, easy-to-control steering. "There was very good steering control via the steering potentiometer," the operator said.
- Exceptional views to the drum edges.
- Large water tanks. Newly designed front and rear water tanks for the sprinkling system hold volumes of water that are among the highest on the market – minimising refills during asphalt compaction.

The Ammann ARP 75 also provides a wide range of working widths, another important feature on the supermarket jobsite.

The machine offers a variety of options as well:

- 360° LED lights
- Air conditioning
- Radio
- Diagonal 45° edge cutter
- ACE force – Ammann's proprietary Intelligent Compaction system
- LED warning beacon
- Infra-red thermometer
- ServiceLink Plus, Ammann's telematics system
- Q Compaction, GPS-based, position-accurate digital area compaction control
- Reverse camera

The Ammann ARP 75 proved up to the challenge. It supplied the productivity needed in open spaces and reached targets in the tighter locations, too. And its manoeuvrability ensured it covered every centimetre of the jobsite.



ELECTRIC ROLLER BOOSTS COMPANY'S CLIMATE NEUTRALITY GOAL



SUSTAINABILITY

ROELOFS UTILISES AMMANN eARX 26-2 ON PAVING JOBSITE

A Dutch business has a goal of being 100% climate-neutral by 2030. It took a step in that direction recently with the utilisation of an Ammann eARX 26-2 Tandem Roller – an electric-drive machine.

Roelofs, a family-owned business with several locations in the Netherlands, recently completed a paving project in Beltrum with the Ammann eARX 26-2. The roller effortlessly compacted the top layer of asphalt, which had a depth of 4 cm.

Central to the business is its commitment to sustainability, and the Ammann eARX 26-2 perfectly aligns with that vision. The tandem roller is a zero emissions machine that also provides the power needed on jobsites. In fact, the electric-drive roller is as powerful as comparable diesel machines.

The Ammann eARX 26-2 is extremely customer friendly. Fast charging is conducted via a 200-amp mobile charger that is wheeled to the machine. After a quick plug-in, charging begins. A roller can go from no charge to 100% charged in three hours.

The machine is able to work an eight-hour shift, and sometimes longer, without recharging. A 50-amp charger is also available.

The machine further improves sustainability because little maintenance is required, and the need for fluids is dramatically reduced.

Roelofs is a company built on providing added value to its customers. It offers expertise in development, water/sewerage and the optimisation of raw materials.

The company controls the entirety of its projects – from consultation and design to construction, management and maintenance.

Roelofs also serves as an innovative knowledge partner, from development of advanced asphalt mixtures to data-driven management. The company works with strategic partners on high-quality use of public space, with an eye toward the impact on the climate and future generations.

Development in the Netherlands increasingly lies with partnerships between local authorities and the business community. Roelofs is a valuable partner given this approach.

eARX 26-2

SPECIFICATIONS

Operating weight

2640 kg (5820 lb)

Drum width

1200 mm (47,2 in)



eARX 26-2

DON'T COMPROMISE ON POWER OR PRODUCTIVITY
- CHOOSE ELECTRIC TODAY!

AMMANN



ELECTRIFY YOUR WORKSITE WITH FULL POWER!

INTRODUCING THE REVOLUTIONARY ELECTRIC RANGE:

- **eATR Rammer:** Unleash the force of compaction, rivaling its petrol counterpart!
- **eAPF Vibratory Plate:** Power-packed performance, matching the output of traditional petrol machines!
- **eARX Light Tandem Roller:** Go big and green! Fully electric, 8+ hours of non-stop operation without recharging!

Get the job done efficiently and eco-friendly with your electric trio!

For additional product information and services please visit: www.ammann.com
MMP-2922-00-EN | © Ammann Group



A TRAIL OF SUCCESS

SUSTAINABLE ELECTRIC-DRIVE ROLLER TACKLES MULTIPLE JOBSITES



Bam Nuttall
Avonmouth Docks, Avonmouth,
Bristol



Balfour Beatty Demonstration



Alan Brown Surfacing Ltd.
Boyleston, Derbyshire

COMPACTION OF RECYCLED AGGREGATE FOR A SEA DEFENSE WALL

A 17 km wall is being constructed at the Avonmouth Docks, part of the Port of Bristol. The wall will prevent flooding of existing homes and businesses – and allow further development as well.

OPERATOR COMMENTS

- The operator had been using compaction equipment for over two years and is impressed by the speed, particularly in travel mode, and the quietness of the machine. He likes the easy switch over from hard to soft roll mode
- The seat and operator positioning are comfortable, with good all-around visibility

DEMO OF MACHINE AT AMMANN FACILITY

Two visitors traveled to Ammann's regional office. First there was a machine demo, and then the visitors tested the compactor themselves – in both static and vibratory mode.

VISITORS COMMENTS, AFTER OPERATING THE MACHINE

- It is appreciated that machine operation is almost identical to the standard diesel model and there would not be a learning curve for current operators
- One visitor is very interested in the reporting of data and transparency it would give the administration team managing a project
- There is interest in how Ammann Compaction Expert (ACE) could add further value to the eARX 26-2

COMPACTION OF ASPHALT OVERLAY OF A CONCRETE BASE

Harehill Farm in Boyleston stores silage in a large purpose-built pit. The base is made of concrete but is topped off with an asphalt mix specifically designed for silage pits. The farm is located on sand and environment protection demands that the concrete and asphalt ensure run-off is drained to the proper locations. The electric machine worked behind the paver as the special mix of top course was laid at a graded depth of 45mm-55mm and worked around the galleys and drainage systems.

OPERATOR FEEDBACK

- The eARX 26-2 is a smooth machine and very easy to use with excellent visibility.
- The speed is appreciated
- The operator tested both hard and soft mode and appreciates the differences. The operator stated that soft mode is a feature unavailable on machines currently in the fleet
- The machine worked for a full day with plenty of battery time left and charging top-up was quick and easy



eARX 26-2



Ammann’s electric-drive tandem roller spent the summer on a tour of the United Kingdom.

Instead, the Ammann eARX 26-2 visited jobsites where field testing could be completed in real conditions – and in diverse applications.

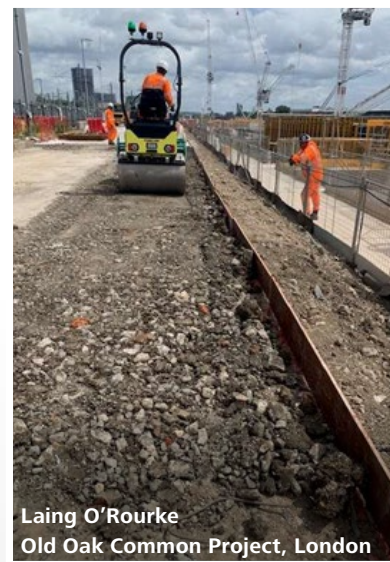
The journey started with visits to several trade shows, where curious visitors could review the static machine. After that, it was off to work! Here are a few samples of reports made at the many sites it visited.



Hanson UK
Ravenstone, Leicester



Balfour Beatty Vinci
BBV – Oxford Park and Ride
Eynsham, Whitney



Laing O’Rourke
Old Oak Common Project, London

RESURFACING OF WASH LANE

The road was being milled, followed by placement of an asphalt base at depths from 55mm to 65 mm. The Ammann eARX 26-2 worked directly behind the breakdown roller to compact the asphalt.

OPERATOR COMMENTS

- The ease of functions is impressive
- There are only two grease nipples on the steering cylinder – everything else is maintenance-free
- The machine is quiet
- It is fast in travel speed (second gear)
- The machine is smooth when switching from forward to reverse
- There is a difference between hard and soft mode. Soft mode works well given the materials and conditions on this job

PATHWAYS AND PEDESTRIAN AREAS

One of the very large strategically placed park and ride facilities being created to support tourists and visitors to Oxford. Galldris are the main contractors to BBV and have done the bulk earthworks and groundworks of the project. The eARX26-2 had been displayed in a static exhibition on site for a Supplier and Customer Event and went straight from this to the jobsite the following day. The machine was used for the compaction of MOT Type 1 on the pathways and pedestrian areas that were still under construction.

COMPACTION OF RECYCLED AGGREGATE AT A RAILWAY HUB

One of the first stops was at the new super-hub set to be the largest railway station ever built in the UK. The electric-drive roller worked on 6F5 material, a recycled aggregate comprised of hard, crushed materials – including concrete. The size ranges from 75mm down to dust, making it perfectly suited as bulk fill. An operator and supervisor tested the machine and were impressed, stating they would be happy to switch to the Ammann eARX.

OPERATOR COMMENTS

- Speed is faster than a standard roller – however, it can be controlled
- Working from the seat is comfortable, the sliding seat made visibility even better
- It takes very little time to learn to operate the machine
- Overall, they would be happy if all rollers were exchanged for electric rollers, and they would like the Ammann roller back on the project
- Both commented on the quietness of the machine – even while it worked with both drums vibrating



CONCRETE FOR EVERY REQUIREMENT

QUALITY CONCRETE MADE TO MEASURE: SCHUMM GMBH BUILDS NEW CONCRETE MIXING PLANT

Concrete is the business of Schumm GmbH-Beton from Crailsheim, Germany, which was founded in January. The company's founders Alexander and Fabian Schumm have invested in a compact CBT 60 SL Elba concrete mixing plant from Ammann for the building material – precisely tailored to the needs of their customers.

In Crailsheim, on the site of the Johann Heumann quarry and ballast plant, concrete has been flowing out of the mixer into the pickup vehicles of local contractors since June – in any quality required, in both large and small quantities. This is the response of the owners of the new Schumm GmbH-Beton concrete mixing plant, Alexander and Fabian Schumm, to local demand. "We saw the need and looked at plants from various suppliers for our

project. It is not only the quality of the product that is important to us, but also that a concrete mixing plant like this can be configured to meet our needs," Alexander Schumm tells us. The two company founders wanted to create production options for various concretes as well as filling options for large or small concrete volumes in order to cover the increased local demand.

After visiting a ready-mix concrete plant with a comparable Elba mixing plant from Ammann in Kirchheim/Teck, the decision was made. "At Ammann we found what we were looking for. The advice is right, the service works and is based in Germany. In addition, we have many options with the flexibility of the plant and can configure it exactly according to the customer's needs," adds Fabian Schumm.

Overview of the newly installed Ammann CBT 60 SL Elba ready-mix concrete plant from Schumm GmbH Beton. The plant is flexibly designed, allows special mixtures, and offers filling options for large and small concrete quantities.



CBT 60 SL Elba



READY-MIX CONCRETE MIXING PLANT WITH A WELL-THOUGHT CONCEPT

“Our modular technology of the Elba series offers a wide range of applications and uses for ready-mix concrete plants,” explains Volker Kies, Director of Sales at Ammann Elba Beton GmbH.

The concrete batching plant that the Schumm’s chose, a CBT 60 SL Elba, meets the requirements. It can be easily transported in two open-top containers, as favourable transport dimensions are maintained. The assembly is extremely easy thanks to the well-thought folding mechanisms. “All plant components are connected to each other and pre-installed electrically and pneumatically. The connection and installation work is largely eliminated. Therefore, the plant can be set up very quickly and easily,” explains Kies.

The CBT 60 SL Elba also does not have to be placed on an elaborate foundation that still requires a static test. “A soil pressure of 250 kN/m² is sufficient,” explains Kies. For the Schumm GmbH-Beton plant, a concrete slab about 30 cm thick was poured on which the plant now stands.

The compact CBT 60 SL Elba is equipped with a single-shaft compulsory mixer CEM 1000 S Elba. The linear bin CEL 80/4 with integrated weighing belt enables the storage of four aggregate components, each with a volume of 20 m³. Up to 60 t of cement are stored in each of the two cement silos. The control system – an Ammann control system as1 – is located in an associated container.

The ready-mix concrete plant of Schumm GmbH in Crailsheim still has special features: With an additive dosing system and

an extended weighing belt, special products can be fed in and weighed in order to produce concretes with special properties according to customer specifications. In addition, a second as1 control workstation has been installed in the scale house. This means that personnel do not always have to be available at the plant.

VARIOUS CONCRETE RECIPES: FULLY AUTOMATICALLY CONTROLLED

“With our concrete batching plant, we are closing a gap in the demand for building materials in our area. We also want to serve customers who need concrete for smaller construction projects,” says Fabian Schumm. “For this purpose, in addition to the delivery device for large truck mixers, we have also equipped our plant with a swivel hopper.” This is swivelled under the discharge hopper of the mixer and is extended with a flexible rubber hose at the end. This allows filling from a height of about two meters into a trough on a flatbed truck.

“We made the right decision with the CBT 60 SL Elba concrete mixing plant and can offer construction companies as well as landscape and garden designers a variety of different types of concrete in consistently excellent quality. And this also in small volumes, which the large concrete mixing plants cannot offer at all,” the two company founders are pleased to say. “The high degree of flexibility in the planning of the plant convinced us, the lower construction costs due to the folding principle and the pre-assembled connections were just as pleasing, as was Ammann’s first-class customer service. In case of an emergency, the employees are available 24/7.”

The linear bin CEL 80/4 with integrated weighing belt enables the storage of four aggregate components, each with a volume of 20 m³.



SAUDI PROJECT PROMOTES HEALTHY LIFESTYLES

AMMANN LIGHT EQUIPMENT COMPACTS RECREATIONAL TRAILS

The Saudi Arabian government is devoting vast resources to the Sports Boulevard, a public project that aims to ensure Riyadh is recognised as one of the world's most livable cities by 2030. Ammann light equipment is helping turn this dream into a reality.

The project is creating green space that will encourage citizens of Riyadh to follow a healthy lifestyle, according to the project website. It promotes exercising and participation in as many as 50 different sports – particularly, walking, cycling and horse riding.

The Sports Boulevard will encompass nine districts and also offer public artwork, entertainment facilities, events, activities, and business opportunities. The project is aligned with the Kingdom's Vision 2030, an economic and social reform blueprint with the goal of opening up Saudi Arabia to the world.

The project isn't expected to be completed until the end of the decade, but construction on several districts is under way. Contracts with a value of US \$661.5 million were awarded in 2021, and work has begun.

An initial phase includes building roads, bridges and infrastructure for Hanifah Valley, one of the districts being developed in Riyadh, the capital and largest city of Saudi Arabia.

The district runs for 18.5 km and requires a large volume of work to be completed. There is a great deal of need for light equipment because this portion/section consists of many paths for walking, biking and horseback riding.

A major Saudi contractor, Al Bawani, is playing a key role in the project. Al Bawani is utilising multiple Ammann machines on the jobsite. They include an Ammann ATR 68 Rammer; APR 22/40 and APR 25/50 Reversible Vibratory Plates; an ARW 65 Walk-Behind Roller; and an ARX 23 Light Tandem Roller.

The Ammann equipment is ideal for the jobsite's needs:

- The ATR 68 Rammer features a low centre of gravity, giving the machine outstanding stability that make operation effortless.
- Ammann's reversible plate compactors utilise hydrostatic steering that enables quick directional changes and the ability to compact in hard-to-reach places.
- The ARW 65 Walk-Behind Roller offers clearance on both drum sides, allowing compaction work extremely close to curbs, retaining walls and other obstacles. No extra time-consuming work on edges and in confined areas is needed.
- The ARX 23 enables smooth starts and stops with the help of an electronic drive lever. The operator platform is spacious and comfortable.





"The products provide operator comfort and are reliable and user friendly," said Walid Khaled, Assistant Plant and Equipment Director at Al Bawani. Khaled is directly involved in the asset management of the purchased fleet as well as supplementing with rental units as needed.

General Trading & equipment (GTE), The Ammann Dealer is extremely supportive, Khaled said. "Technical support is always extended to us through the provision of free inspections for our machines and any relevant technical information or recommendations we require," he said. Technicians visit the jobsite as needed.

"The after-sales service is perfect and we are highly satisfied with the availability of items in their store," Khaled added.

Established in 1991, Al Bawani has grown into a fully-fledged general contracting corporation with a sizable portfolio, strong financial position, and a significant presence in a broad range of industries. Its construction division is now among the five largest operators in the country.

"To date, we have completed over 250 projects, building long-term partnerships and earning the trust and loyalty of our clients in the process," the company states. "Furthermore, we currently have over SAR 9 billion worth of ongoing projects. These are being serviced by our 12,000-strong workforce, each of whom is a specialist in their respective fields."



A SUSTAINABLE FACTORY BUILDING SUSTAINABLE PLANTS

AMMANN OPENS NEW MANUFACTURING FACILITY IN CHINA

Ammann's new factory in China is hailed as a major turning point in the company's growth plans for Asia – and a major win for sustainability in China.

The factory, located in Zhangjiagang, will manufacture asphalt-mixing plants and parts for China and beyond. An opening ceremony was held in early August.

Hans-Christian Schneider, CEO Ammann Group, opened his statements to those gathered with a single word: "Sustainability!"

The region now has a sustainable factory building sustainable asphalt-mixing plants.

"The design of the new (manufacturing) plant adheres to the Swiss concept of environmental respect, i.e., reducing energy consumption, plant emissions, and its impact on the environment," said Zhang Liguang, General Manager of Ammann China.

The factory's final products – the asphalt plants themselves – will adhere to tight Swiss sustainability standards. That includes Ammann's global Green Plant initiative, which promotes sustainable technologies, innovative solutions, and environmentally friendly asphalt-mixing practices.



THE FACILITY

The new company spans 50,000 m², with 5,000 m² dedicated to office space. It has the capacity to produce 80-100 asphalt-mixing plants annually. Additionally, the factory will produce spare parts for the region.

The location, in the Yangtze River Delta region, will play a crucial role in the region's success.

The factory site, near a key transport hub, was chosen to:

- Reduce shipping costs.
- Improve sustainability by shortening travel distances for importing raw materials and exporting finished plants.
- Quicken delivery times.
- Increase access to strategic markets throughout China and the Asia-Pacific region.

HISTORY

Ammann entered the Chinese market in 1997. It opened a Beijing office in 2000.

The growth spurred the development of the Shanghai factory, which began manufacturing asphalt-mixing plants in 2005. It has built 500 plants since opening and will continue to operate.

"The opening of the new factory... continues the firm investments made by Ammann in the Chinese market for many years," Schneider said.

The new facility was years in the making. A great deal of time and effort were required during the site selection process and building of the factory.

Yet the development team stayed on track, despite the coronavirus and other challenges.

"I would like to thank all the governmental authorities who have helped us with the new plant project, our partners who have worked so hard together, and the Ammann China team who have worked so hard to make this happen," Schneider told those gathered.



SUSTAINABILITY



MEXICAN FIRM EXPANDING INTO GOVERNMENT SECTOR



PRODUCTIVITY

AMMANN ACM 140 PRIME HELPS FUEL GROWTH

It's a period of growth for Leyca Asfaltos. First, the company's core business – housing and industrial development – is booming in Mexico.

In addition, Leyca Asfaltos is ready to enter a new business segment: governmental work.

The growth plans have led Leyca Asfaltos to decide to acquire a second Ammann asphalt-mixing plant, an Ammann ACM 140 Prime.

"The private market has experienced a 40% increase, and this second plant will make us competitive as we venture into the public works sector," said Mario Levya, Director of the company, based in Apodaca, Nuevo Leon, Mexico.

The growth is also impacting the company's paving division. Leyca Asfaltos purchased a second Ammann AFT 600-3 Asphalt Paver, in addition to the Ammann plant.

EXPANDING THE BUSINESS

Expanding into the public sector is a big step for Leyca Asfaltos.

The company started as an earth-moving business. It then ventured into asphalt production – a move that led to the creation of Leyca Asfaltos. The name of the company was formed by combining the names of the owners, Mario Levya and Juan Carlos Cantu.

The company's first plant purchase was an Ammann ACM 140 Prime.

It has since added a number of Ammann products to its lineup: an AFT 600-3 Asphalt Paver, an ARX 110 Tandem Roller, and an AP 240 Pneumatic-Tyred Roller.



Single drum roller



Tandem roller



Pneumatic roller



Cont. asphalt mixing plant



MOVING TOWARD SUSTAINABILITY

Leyca Asfaltos is the first asphalt producer in the state of Nuevo Leon to use natural gas as a fuel.

"It's mainly about caring for the environment and giving back a better life," said Leyva. "We are a company that wants to generate value by reducing our emissions in all processes. Using natural gas in our plant guarantees lower emissions."

Choosing natural gas was a relatively easy decision. "It has low cost, good availability and the low emissions that will help us better conserve our planet," Leyva said.

Utilising the fuel has been effortless, he said. The next environmental effort might well be using recycled asphalt in Leyca Asfaltos mixes.

The company already processes waste materials for re-use at a later time. That commitment is making projects greener and helping Leyca Asfaltos' business.

"End customers appreciate our commitment, and it has been the entry card to the government," Leyva said. "In all government projects, we must disclose the environmental impact and mitigation activities."

MAKING QUALITY MIX

Sustainability is a good start for a plant, but other goals must also be met. The new plant had to be productive from day one. "The help of the new plant was instantaneous, as we respond very quickly to all our commitments," Leyva said.

Quality is exceptional, too. "The mix is excellent," Leyva said. "The recipe we put into the program is always exact to the design and control of the laboratory."

The plant has not been relocated frequently, though transport is easy. If relocation is necessary in the future, Leyca Asfaltos will be ready.

The company also noted that the plant's remote assistance is very helpful.

THE PAVER

The success of the first Ammann plant led Leyca Asfaltos to choose the Ammann AFT 600-3 paver. "The plant gave us such good results that we had confidence to take an additional step with the Ammann brand," Leyva said. "The results have been remarkable, and we are now purchasing a second Ammann paver."

The paver is extremely stable thanks to its tracks and the grip they provide. PaveManager 2.0, advanced control technology that eases the burdens on the operator, is an enormous benefit.

"It is very friendly and practical to use," Leyva said. "The machine almost works alone. The longitudinal leveling is very friendly. Once it is configured, we leave it on automatic and the paver works alone."

Quality is so good that it has become a selling point for Leyca Asfaltos. "Our client portfolio is growing day by day because they trust our company and the equipment we have," Leyva said.

COMPACTION

Working behind the paver is an Ammann ARX 110 Tandem Roller. "It is a completely modern machine that allows the operator to generate quality compaction," Leyva said. "Density is reached very efficiently."

Operators appreciate the machine's manoeuvrability and visibility, as well as the electric drive lever, which enables smooth starts and stops on the freshly placed asphalt.

Leyva sees the roller as a key component in the successful outcome of the projects. "The joint cutter and compactor make a difference in the finishing. The crab step is an option that provides a lot of manoeuvrability."

The Ammann AP 240 provides excellent, efficient compaction, Leyva said. It also provides a great finish thanks in part to the air-on-the-run system. "We adjust the pressure so we can provide a better finish," Leyva said.

THE DEALER

Leyca Asfaltos has an exceptional relationship with TMR, the local Ammann Dealer. "TMR is an excellent ally that has always trusted our group of companies," Leyva said. "It has an excellent sales and support team."

TMR is the final piece to the puzzle – from asphalt production, to paving, to compaction, to after sales. Leyca Asfaltos uses Ammann products every step of the way and has become so successful that it is expanding into a new sector.



CONTROL SYSTEM KEY TO OVERHAUL



RETROFIT TRANSFORMS NON-AMMANN PLANT FROM IDLE TO PRODUCTIVE

J. Charoen Subanan Co. Ltd. valued its Ammann JustBlack 120 Asphalt-Mixing Plant since acquiring it in 2015.

The Chachoengsao, Thailand-based asphalt producer appreciated the plant's high production and the ease and efficiency of the Ammann as1 Control System.

Yet in 2020, when it was time to acquire a new plant, J. Charoen Subanan went a different direction.

"A supply contract mandated the use of another manufacturer," said Woraphong Poolpealsuvana; Territory Manager of Ammann in Thailand. "We were disappointed that the company didn't purchase an Ammann plant, but we understood. They were obligated by the supply contract and had no choice."

Problems quickly arose with the new plant. It lacked productivity and had issues with weight accuracies. In some cases, hot-mix discharge readings were off 10% from the actual weights.

So poor was the performance that J. Charoen Subanan shut down the plant when the job was done. The plant sat idle while the company relied exclusively on the 8-year-old Ammann JustBlack 120 Plant it had been using for other projects.

Then came the recent announcement that the Thailand Department of Highways (DOH) would allow up to 60% recycled asphalt (RAP) on new and existing highways.

This led Mr. Phairot Sukhathip of J. Charoen Subanan to consider how he could coax some value out of the plant that was inactive due to its quality issues.

"When he learned that the DOH would implement the 60% RAP policy, he approached us about retrofitting an Ammann RAH60 dryer and as1 Control System on the non-Ammann plant," said Woraphong.

Ammann was able to complete a comprehensive retrofit that included the as1 – yet still utilize some of the idle plant's core components.

"It was more cost-effective than purchasing a new plant," Woraphong said. "It also allowed the customer to put a plant back to work."

The retrofit was tested immediately, with the RAH60 producing 100 tons without hot recycling, and then 300 tons with recycling. "The performance was exceptional," Simawan said.

The switch to the as1 is helping smooth operations and avoid the problems the competitor's plant encountered before the retrofit.

"According to the operator, the as1 Control System is the best innovation for asphalt plants in Thailand," Simawan said. "It is very easy to monitor, operate and control. Also, the accuracy is exceptional. The as1 system gives the operators the confidence to run the plant safely and efficiently". Additionally, this customer utilizes the Ammann as1 PIP online plant information point to see the actual plant status, enhancing their monitoring capabilities.

J. Charoen Subanan didn't limit the retrofit to the competitor's plant. It also upgraded the Ammann 120 Just Black Plant with an RAC30 to improve its recycling capabilities.

"Now, J. Charoen Subanan has two plants that are highly productive and capable recyclers," Simawan said.



HIGHLIGHTS

The retrofit included

- The as1 Control System, Ammann's proprietary software system that improves quality while reducing material usage and fuel consumption
- A two-bin RAH cold feeder
- An RAH collection belt
- An RAH elevator
- An RAH60 dryer drum
- An RAH tower, with level silo and weight scale

GETTING TO THE ROOT OF THE BUSINESS

AMMANN ROLLER HELPS STRENGTHEN NATURAL TURF

An Ammann tandem roller has found success in a unique application in Turkey.

The country's leading natural turf grower, Çim Dünyası, is utilising an Ammann ARX 23.1-2 Light Tandem Roller in the development of its high-quality products.

Compacting with the Ammann ARX 23.1-2 during the growth of the natural turf helps to promote healthy, sturdy and playable grass.

- The roller compacts the soil, removing air pockets and adding stability to the root structure of the grass.
- It helps ensure that the surface is even, which is important for consistent ball bounce and roll during games.
- It levels any bumps or divots that may emerge during the growing process.

Quality is the calling card of Çim Dünyası. In fact, the company's turf is so popular in Turkey that it is now being sold abroad.

"We aspire to be a company that provides added value to the Turkish economy and improves employment opportunities thanks to our grass, which we have recently started exporting," said Fahrettin Durmaz, General Coordinator of Çim Dünyası.

Ammann and Çim Dünyası first connected a little more than a year ago. "We wish that our paths had crossed sooner," Durmaz said. "If we had met Ammann earlier, we are sure that we could be even more successful. It's a machine that makes a difference and is always ahead."

The Ammann ARX 23.1-2's production was noticed immediately. "Our compaction efficiency increased significantly from the first day," Durmaz said. "Costs per day have decreased compared to the previous periods. The machine runs cooler and has lower fuel consumption. We cannot stop saying that this machine greatly reduces our work."

The compactor is a good match for the application. "It has a powerful and environmentally friendly engine," Durmaz said. "We had to protect the environment around us while bringing this green turf to life. For this reason, it was very important for us that the carbon footprint of the machine was at the lowest levels while providing all of Ammann's capabilities."

He also praised the roller's manoeuvrability, low sound levels and operator comfort.

"The operator platform provides comfort, with wide legroom and a comfortable seat," Durmaz said. "We work long hours in the field, and with this machine the operator does not get tired."

Easy maintenance, productivity and fuel efficiency lessen the cost of ownership.

Çim Dünyası grows ready-made turf on a 250.000 m² farm in Torbalı, İzmir, Turkey. The turf is sold in 81 provinces.



ARX 23.1-2

NEW PRODUCTS

A STEERING BREAKTHROUGH FOR AMMANN WALK-BEHIND ROLLER

The new Ammann ARW 65-S Walk-Behind Roller features a steering innovation that enables the machine to move forward, backward, and laterally.

The new S version has a pivoting mechanism that enables movement in all directions. The prior version only enables forward and reverse movements. With the S version, the machine can also be moved to the right and left via the control handle.

The effortless lateral movement is a significant advantage. Body weight is not required to direct the machine, which is often the case with competitive models. This improvement prevents operator fatigue, eliminates surface irregularities and provides consistency throughout the shift.

Ammann Walk-Behind Rollers have long been valued because they offer two applications (both soil and asphalt compaction) in one machine – with one acquisition cost.



ROLLERS PROVIDE SAVINGS AFTER THE SALE



Ammann's new Single Drum Rollers are highly powered and offer significant cost reductions through savings on fuel and fluids.

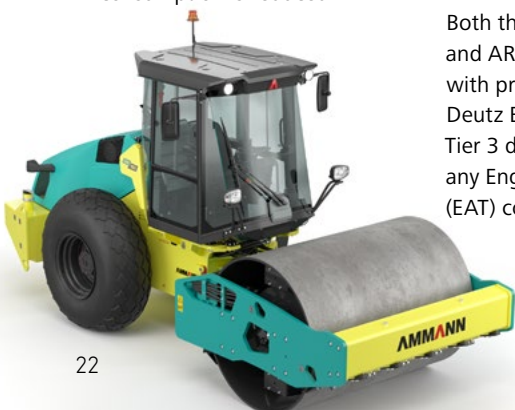
The new ARS 110.1 T3 and ARS 130.1 T3 are powered with reliable Tier 3 engines and follow the valued tradition of high performing, compact machines from the Ammann ARS soil compactor family.

With the new rollers, fuel consumption is reduced

by 10% (compared to the previous Tier 3 roller). In addition, requirements for hydraulic oil and cooling liquid have been reduced by 16% and 38%, respectively.

The new Ammann ARS 110.1 and ARS 130.1 weigh 11 and 13 tones, respectively. The new Tier 3 machines are dedicated for markets with unregulated engine emissions and replace the previous generation of ASC T3 compactors.

Both the Ammann ARS 110.1 and ARS 130.1 are equipped with proven and reliable Deutz EU Stage IIIA/US EPA Tier 3 diesel engines without any Engine After-Treatment (EAT) components.



COMPACTOR LOWERS OWNERSHIP COSTS



Ammann's new 11-ton single-drum roller offers exceptional compaction power – and exceptional savings on ownership costs after the sale.

The new ARS 110.2 T1 is equipped with a powerful and reliable Cummins 4BT3.9 diesel engine. No engine after-treatment (EAT) is required – one of many efforts to simplify service/maintenance and reduce costs.

"The new roller requires 17% less engine oil and 5% less hydraulic oil than the previous generation of machines," said Radek Remeš. "Both acquisition and disposal costs are lowered. These are savings that go directly to the business owner's bottom line."



ANOTHER E-PLATE ON THE WAY

Ammann's new electric-drive, hydrostatic vibratory plate compactor will hit the market in 2024. The Ammann eAPH 70/95 will be another e-plate in Ammann's growing lineup of electric products.



SUSTAINABILITY



ARX 10.1 PETROL

The ARX 10.1 is the first Ammann light articulated tandem roller to be powered by a petrol engine. The Honda GX630 (15.5 kW / 21 HP) meets EU Stage V and U.S. EPA Phase III emission standards.

The machine is noted for its side-free drum design. It features a standard working width of 900mm (35.4 in) in an in-line drum configuration. The front drum is equipped with a

vibratory system, delivering 15kN / 70 Hz of compaction power and suitable for a wide range of jobsites.

With intuitive control and easy-to-explain operation, the ARX 10.1 offers significant advantages for training end-users, short-term rentals, or less-skilled operators. This makes the Ammann ARX 10.1 an ideal roller for small compaction projects.

EXCEPTIONAL OPERATOR VISIBILITY

Perfect all-around machine visibility to maximize safety on the jobsite



MAINTENANCE-FREE PARTS

Reduce time required for machine maintenance and prevent damage to components



SIDE-FREE DRUMS

Homogenous compaction against obstructions without need of additional tools



Tandem rollers

WWW.AMMANN.COM



STOP BURNING PROFITS

Fuel economy matters, now more than ever. You'll get it with the new Ammann ARS 30 and ARS 50 Single Drum Rollers. These machines maximise fuel efficiency through advanced engine technology, integrated ECOMode and an innovative, fully hydrostatic drive system.

THEY ALSO PROVIDE COST-SAVINGS AND SUSTAINABILITY THROUGH THE ECODROP CONCEPT:

- Maintenance-free vibratory system
- Maintenance-free steering joint
- Gear boxes have been eliminated, along with the oil they require

What about performance? These machines – the most compact in the Ammann single-drum roller lineup – deliver a powerful punch that will help your crews reach compaction goals in a hurry.

Power. Manoeuvrability. Fuel efficiency. You can have it all.



ARS 30



ARS 50



ARS 70



ARS 110



ARS 130



ARS 150



ARS 170



ARS 200



ARS 220

NEW ROLLERS WELCOMED IN NEW ZEALAND

A new series of light tandem rollers are a perfect match for New Zealand, according to the dealer in that country, Youngman Richardson.

"The launch of the new ARX Series-2 (second generation) light tandem roller range heralds the commitment to an even higher level of technology from Ammann," says Youngman Richardson sales director, Phil Fairfield.

"With a legacy stretching back over 150 years, they've got what it takes when it comes to producing outstanding soil and asphalt compaction equipment."



PAVER QUICKLY, EFFECTIVELY PLACES STONE FOR WALKING PATH



Andreas Kortendiek's crew has built multiple stone walkways. The process is simple: place materials by hand, then compact with vibratory plates.

The German landscaper is always open to new ideas, which recently led his crew to place gravel with an Ammann AFT 300-2 Compact Paver, followed by an Ammann ARX 26-2 Light Tandem Roller for compaction.

The results were impressive.

For starters, the machines completed the job in about three hours. Placing the material by hand and compacting with plates would have taken at least a full day, and likely longer, Kortendiek said. Still, it was the quality of the path left behind that really impressed him. The materials are evenly distributed by the auger and leveled by the screed.

"The paver could save a lot of working time, but that is secondary to the nice, level placement of the material," Kortendiek said. "That is never possible with hand work and standard vibratory plates."

THE PROJECT

GaLaBau A. Kortendiek was hired to place a natural stone path in Fresenburg, Germany. The Ammann AFT 300-2 tracked paver was small

enough to work on the 1,6-metre-wide walkway. It effortlessly placed the stone (waterbound 0-16 mm) in difficult terrain. The machine overcome inclines without a problem.

The material was placed at a depth of 7 cm and compacted to 6 cm. The AFT 300-2 laid the gravel for the entirety of the 250-metre path. The walkway is located in a forest, so space was tight – but the paver moved along without issue.

Compacting the gravel behind the paver was an Ammann ARX 26-2 Light Tandem Roller. The machine replaced the vibratory plates the company typically used on the walkways.

The machine compacted in static mode. Compaction was rather simple, as there were no specifications for the job. Still, the machine was another significant time-saver. It also proved effective and manoeuvrable on the tight trail – and left behind a smooth path.

Making the work even more impressive is the fact that the GaLaBau A. Kortendiek crew had no experience operating a paver. The company does not work with asphalt and had never used a paver for gravel placement.

The day started with a 1.5-hour training session, followed by operation – a testament to the intuitive nature of the machine.



AFT 300-2

HIGHLIGHTS

- Theoretical paving capacity of 300 tonnes per hour
- Standard paving width of 1.2 to 2.4 metres
- Maximum paving width of 3.5 m
- Electric- or gas heating for screeds
- Tamper and vibration screeds available
- High quality components
- Excellent visibility from the operator platform
- Modern design
- Material hopper with capacity of 5.5 tonnes
- Low centre of gravity and wide tracks for optimal traction

ARX 26-2

SPECIFICATIONS

Operating weight

2515 kg (5540 lb)

Drum width

1200 mm (47,2 in)



ARX 26-2



AFT 300-2

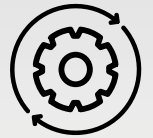
NEWS & EVENTS



SUSTAINABILITY



CONNECTIVITY



PRODUCTIVITY

AMMANN REACHES AGREEMENT TO ACQUIRE ABG PAVER BUSINESS FROM VOLVO CE

The Ammann Group and Volvo Construction Equipment (Volvo CE) have reached an agreement whereby Ammann will acquire Volvo CE's global ABG Paver Business including ABG in Hameln, Germany.

The agreement will benefit both companies by strengthening the product portfolio and distribution network of the Ammann Group, while allowing Volvo CE to continue to focus on developing sustainable solutions and future technologies and services, in line with their strategic direction.

The transaction, expected to be completed within the first half of 2024, includes the transfer of Volvo CE's paving businesses in Linyi (China) and Bangalore (India) as well as Volvo CE's ABG facility in Hameln (Germany).

... Stay tuned for additional details in the coming months.

SMOPYC, ZARAGOZA, SPAIN

Ammann's innovation was on display at SMOPYC 2023, a public works and construction trade show held in Zaragoza, Spain, in November. Featured Ammann products included a walk-behind roller with a breakthrough steering system; an electric-drive tandem roller that is sizable for an e-drive machine; and a digital tool that offers great value for rental houses and other fleet managers.



UPCOMING FAIRS 2024

30. JAN – 2. FEB

**VDBUM
GROSSEMINAR**

WILLINGEN,
GERMANY

A trade exhibition with more than 100 exhibitors and speakers discussing changes in the construction industry

19 – 21. FEB

THE ARA SHOW

NEW ORLEANS, USA

The American Rental Association's annual trade show for the equipment and event rental industry

21 – 23. FEB

ASPHALTAGE

BERCHTESGADEN,
GERMANY

"Sustainability and transformation" is the theme of the German Asphalt Association's show

25 – 27. MAR

**WORLD OF
ASPHALT**

NASHVILLE, USA

Industry manufacturers and service providers showcase their latest products and technologies

24 – 27. APR

INTERMAT

PARIS, FRANCE

A trade fair for sustainable construction solutions and technologies



Shows and events

DON'T MISS OUT!

SIGN UP TODAY AND RECEIVE YOUR NEXT COPY OF OUR CUSTOMER MAGAZINE.

- Enjoy exclusive interviews with specialists
- Read compelling testimonials from customers around the world
- Stay informed about new products and technology



Sign up today



Strengthening Infrastructure
for the Next Generation

www.ammann.com