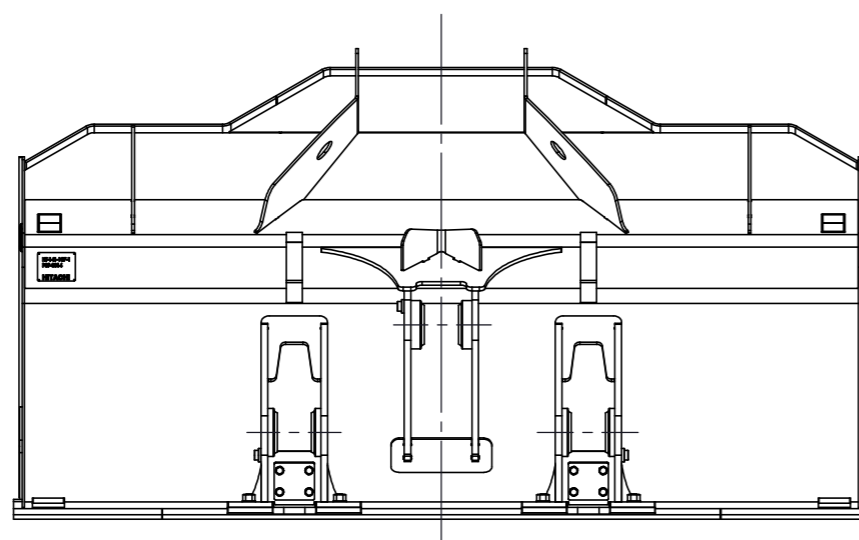
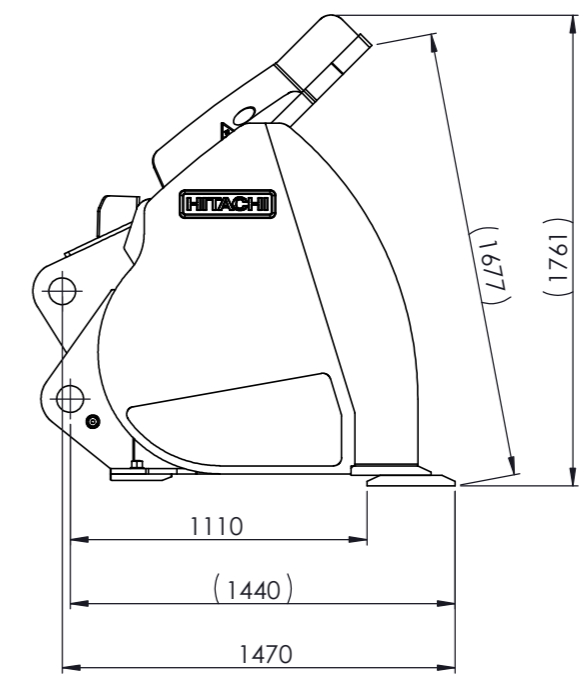
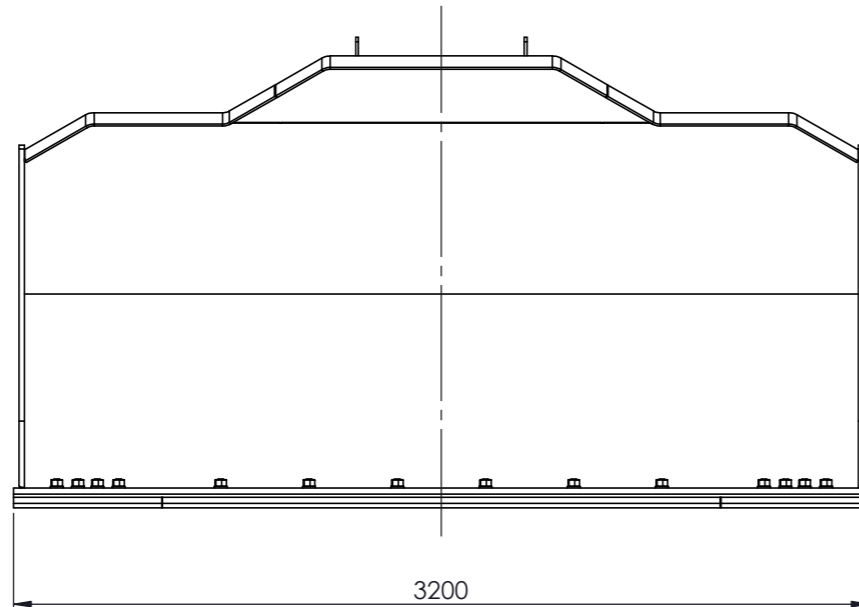


Rev	Comment	Date	Ini



HITACHI		( GP Bucket ) Description	Matreial type	Thickness
Machine type:	ZW250-6	Bottom plate	HX 450	10mm
Hitachi part No:	E0A001457	Back plate	HX 450	10mm
SAE heapes capacity:	3,8 m <sup>3</sup>	Side cutting edge	HX 450	20mm
Width:	3200 mm	Side plate	HX 450	8mm
Max. Payload:	5775 Kg	Side wear plate	HX 450	10mm
Dumping height	XXX	Cutting edge	HB 500	300X35mm
Dumping clearaince	XXX	Bolt-on edge	HB 500	330x40mm

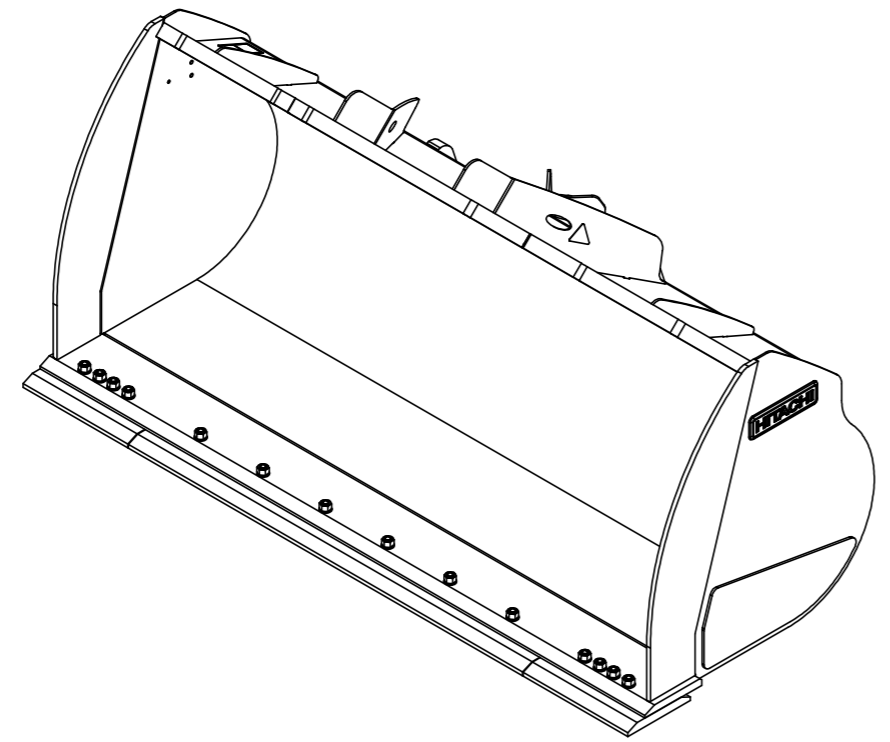
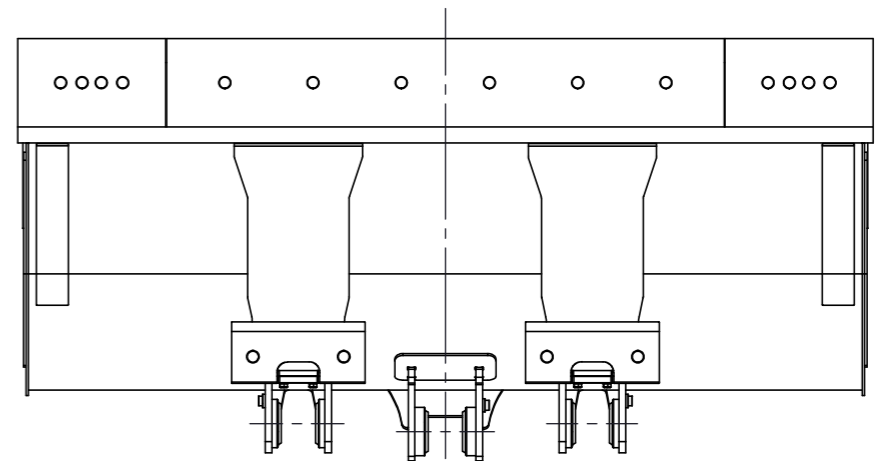
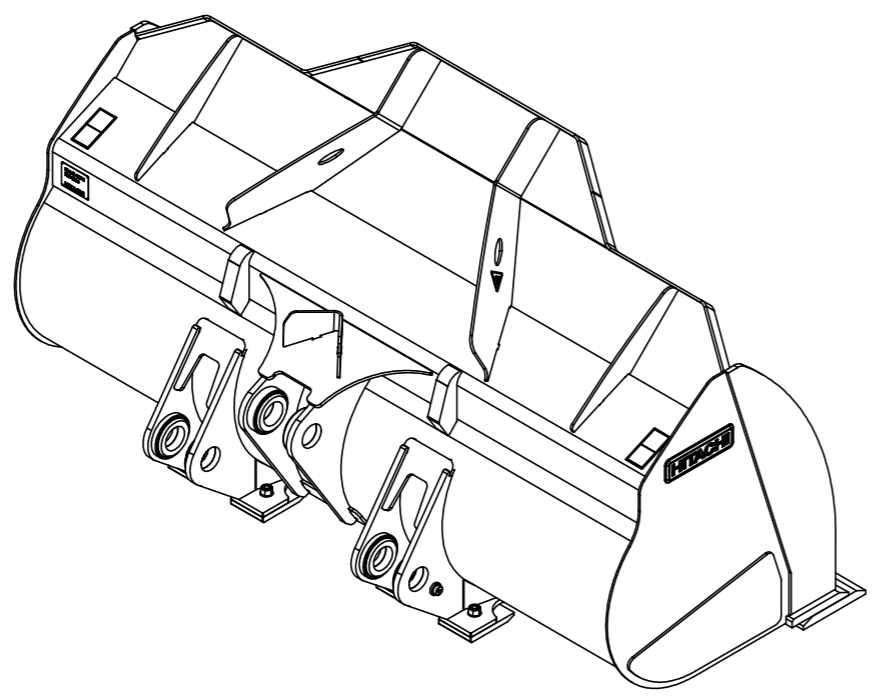
Unless otherwise stated the following applies  
Machined Surface: 3.2/√ General Machining tolerances: DS/EN 22768-m  
Welding tolerances: DS/EN 13920 B, Welding quality: DS/EN ISO 5817 - D

<b>HITACHI</b>	Note1:	3,8 m <sup>3</sup>	Part No.:	E0A001457
	Note2:	3200 mm	Material:	
	Note3:	5775 Kg	Creator:	AMN
	Description:	GP BUCKET		
Surface finish:	Surface area:			0.000 m <sup>2</sup>

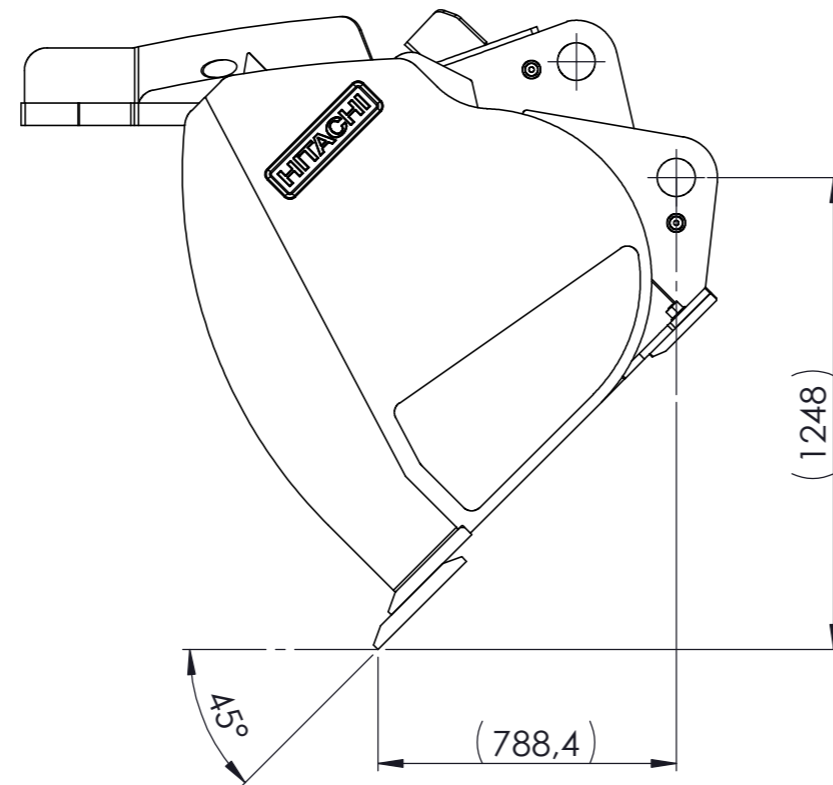
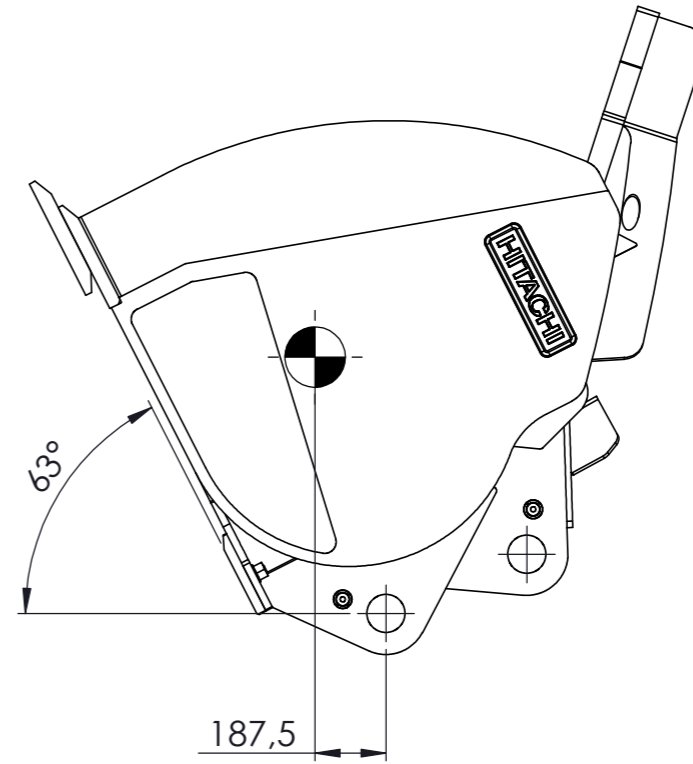
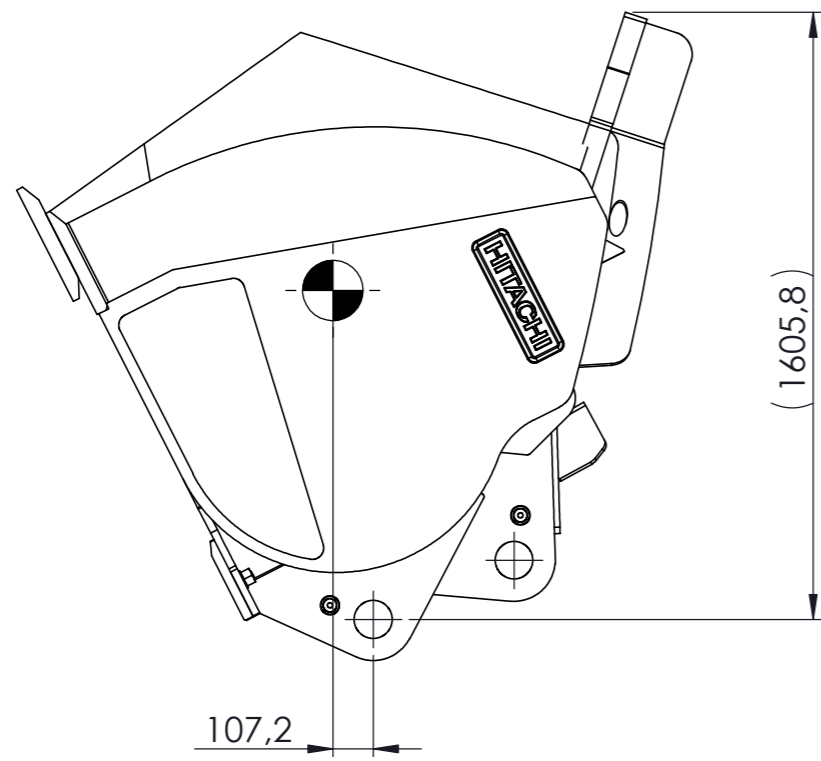
THIS DRAWING REMAINS THE PROPERTY OF SJØRRING MASKINFABRIK A/S. ANY REPRODUCTION IN PART OR AS A WHOLE WITHOUT THE WRITTEN PERMISSION OF SJØRRING MASKINFABRIK A/S IS PROHIBITED.

Date	Filename	Scale	Weight
2021-04-29	P40-0393	1:20	2085.8 kg

Rev	Comment	Date	Ini



Unless otherwise stated the following applies			
Machined Surface: 3.2/√		General Machining tolerances: DS/EN 22768-m Welding tolerances: DS/EN 13920 B, Welding quality: DS/EN ISO 5817 - D	
<b>HITACHI</b>	<b>Note1:</b> 3,8 m <sup>3</sup>	<b>Part No.:</b> E0A001457	
	<b>Note2:</b> 3200 mm	<b>Material:</b>	
	<b>Note3:</b> 5775 Kg	<b>Creator:</b> AMN	
	<b>Description:</b> GP BUCKET		
	<b>Surface finish:</b>		<b>Surface area:</b> 0.000 m <sup>2</sup>
<b>Date</b> 2021-04-29	<b>Filename</b> P40-0393	<b>Scale</b> 1:20	<b>Weight</b> 2085.8 kg
THIS DRAWING REMAINS THE PROPERTY OF SJØRRING MASKINFABRIK A/S. ANY REPRODUCTION IN PART OR AS A WHOLE WITHOUT THE WRITTEN PERMISSION OF SJØRRING MASKINFABRIK A/S IS PROHIBITED.			



**Unless otherwise stated the following applies**

Machined Surface:  $\nabla$  3,2/ General Machining tolerances: DS/EN 22768-m  
Welding tolerances: DS/EN 13920 B, Welding quality: DS/EN ISO 5817 - D

<b>HITACHI</b>	<b>Note 1:</b> 3,8 m <sup>3</sup>	<b>Customer Part no.:</b> E0A001457	
	<b>Note 2:</b> 3200 mm	<b>Creator:</b> AMN	
<b>Description:</b> GP BUCKET			
THIS DRAWING REMAINS THE PROPERTY OF SJØRRING MASKINFABRIK A/S. ANY REPRODUCTION IN PART OR AS A WHOLE WITHOUT THE WRITTEN PERMISSION OF SJØRRING MASKINFABRIK A/S IS PROHIBITED.	<b>Date</b> 2021-04-29	<b>Filename</b> P40-0393	<b>Weight</b> 2085.8
			<b>Rev.</b> 01