

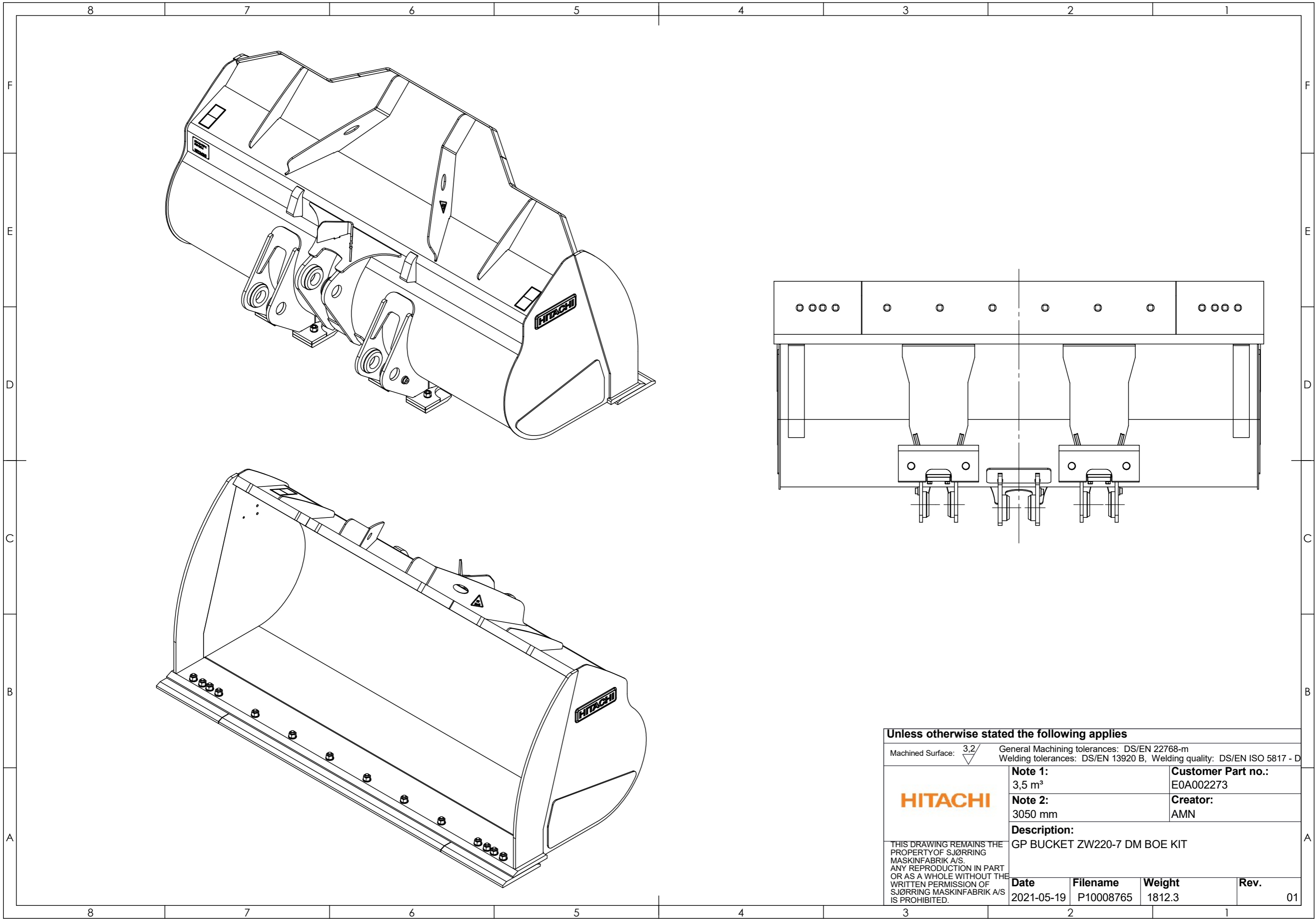
HITACHI		(GP Bucket) Description	Matreial type	Thickness
Machine type:	ZW220-7	Bottom plate	HX 450	10mm
Hitachi part No:	E0A002273	Back plate	HX 450	10mm
SAE heapes capacity:	3,5 m ³	Side cutting edge	HX 450	20mm
Width:	3050 mm	Side plate	HX 450	8mm
Max. Payload:	5250 Kg	Side wear plate	HX 450	8mm
Dumping height	XXX	Cutting edge	HB 500	300X30mm
Dumping clearaince	XXX	Bolt-on edge	HB 500	330x30mm

Unless otherwise stated the following applies

Machined Surface: $\sqrt{3.2}$ General Machining tolerances: DS/EN 22768-m
Welding tolerances: DS/EN 13920 B, Welding quality: DS/EN ISO 5817 - D

HITACHI	SAE heaped capacity: 3,5 m ³	Hitachi part No.: E0A002273	
	Width: 3050 mm	Material:	
	Max payload: 5250 Kg	Creator: AMN	
	Description: GP BUCKET ZW220-7 DM BOE KIT		
	Surface finish: Surface area:		
Date 2021-05-19	Filename P10008765	Scale 1:15	Weight 1812.3

THIS DRAWING REMAINS THE PROPERTY OF SJØRRING MASKINFABRIK A/S. ANY REPRODUCTION IN PART OR AS A WHOLE WITHOUT THE WRITTEN PERMISSION OF SJØRRING MASKINFABRIK A/S IS PROHIBITED.



Unless otherwise stated the following applies

Machined Surface: $\sqrt{3.2}$ General Machining tolerances: DS/EN 22768-m
 Welding tolerances: DS/EN 13920 B, Welding quality: DS/EN ISO 5817 - D

HITACHI	Note 1: 3,5 m ³	Customer Part no.: E0A002273		
	Note 2: 3050 mm	Creator: AMN		
Description: GP BUCKET ZW220-7 DM BOE KIT		Date 2021-05-19	Filename P10008765	Weight 1812.3
<small>THIS DRAWING REMAINS THE PROPERTY OF SJØRRING MASKINFABRIK A/S. ANY REPRODUCTION IN PART OR AS A WHOLE WITHOUT THE WRITTEN PERMISSION OF SJØRRING MASKINFABRIK A/S IS PROHIBITED.</small>		Rev.		
			01	