

DESCRIPTION	MATERIAL	THICKNESS
BOTTOM PLATE	N/A	N/A
BACK PLATE	Hardox 450	8mm
SIDE EDGE	Hardox 450	1.5mm
SIDE PLATE	Hardox 450	8mm
SIDE WEAR PLATE	Hardox 450	6mm
BOTTOM WEAR PLATE	Hardox 450	1.5mm
CUTTING EDGE	Hardox 500	200x25mm
BOLT-ON EDGE	Hardox 500	330x30mm

Unless otherwise stated the following applies
 Machined Surface: 3.2 / General Machining tolerances: ISO 2768-m
 Welding tolerances: ISO 15620-B; Welding quality: BO 5617-D

Capacity: 2.4 m³ Max payload: 3800 kg
 Width: 2535 mm Hitachi part No.: E0A0005692

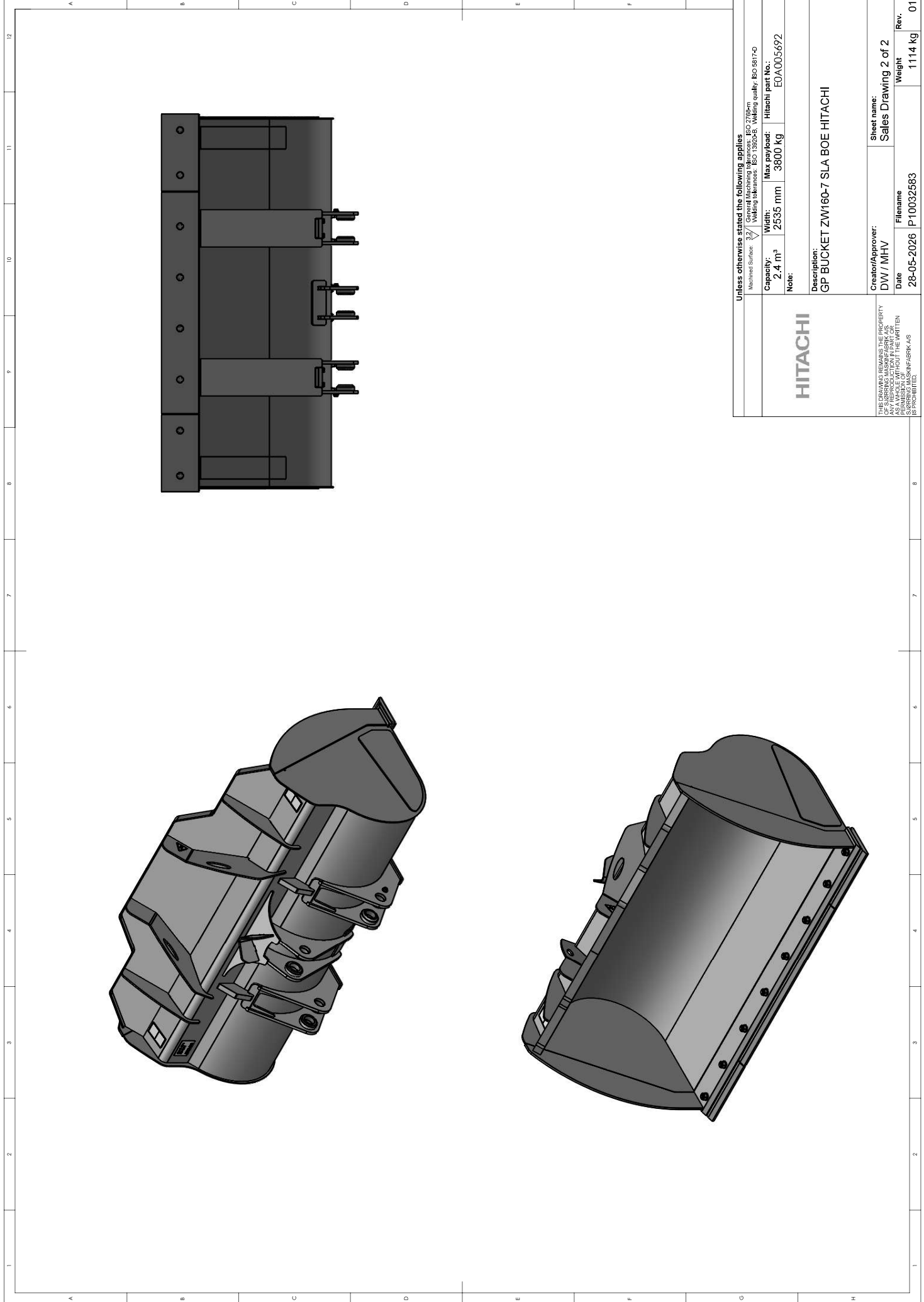
Note:

HITACHI

Description:
 GP BUCKET ZW160-7 SLA BOE HITACHI

Creator/Approver: DW / MHV	Sheet name: Sales Drawing 1 of 2
Date 28-05-2026	Filename P10032583
	Weight 1114 kg
	Rev. 01

THIS DRAWING REMAINS THE PROPERTY OF HITACHI. IT IS NOT TO BE REPRODUCED IN ANY FORM OR BY ANY MEANS WITHOUT THE WRITTEN PERMISSION OF HITACHI. SPRING MASCHINENFABRIK AS PRODUKTZENTRUM



<p>Unless otherwise stated the following applies</p> <p>Machined Surface: 3.2 / General Machining tolerances: ISO 2768-m Welding tolerances: ISO 13529-B; Welding quality: BO 5617-D</p>	
Capacity:	2.4 m ³
Width:	2535 mm
Max payload:	3800 kg
Note:	Hitachi part No.: E0A005692
<p>Description: GP BUCKET ZW160-7 SLA BOE HITACHI</p>	
Creator/Approver:	DW / MHV
Date:	28-05-2026
Filename:	P10032583
Sheet name:	Sales Drawing 2 of 2
Weight:	1114 kg
Rev.:	01

HITACHI

THIS DRAWING REMAINS THE PROPERTY OF HITACHI. IT IS NOT TO BE REPRODUCED OR TRANSMITTED IN ANY FORM OR BY ANY MEANS, WITHOUT THE WRITTEN PERMISSION OF HITACHI. SPRINGMANN MASCHINENFABRIK AS PRODUKTENTZ.