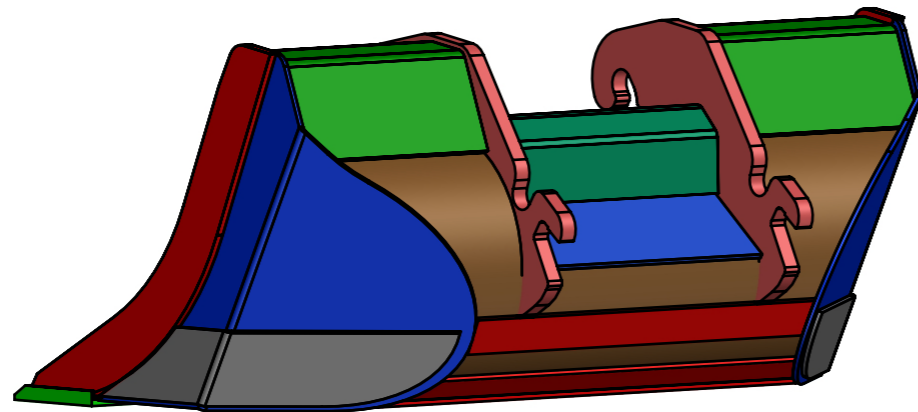


Rated capacity (SAE): $V_r = 0.75 \text{ m}^3$
 Weight: 510kg



12	TT0050870	A	Slijtstrip zijkant rechts	1
11	TT0050869	A	Slijtstrip zijkant links	1
10	TT0050868	A	Zijkant rechts	1
9	TT0050867	A	Zijkant links	1
8	TT0050865	A	Rug rechts	1
7	TT0050864	A	Rug links	1
6	TT0050863	A	Bodemplaat	1
5	TT0045523	A	Tussenplaat	1
4	TT0045520	A	Voorkant	2
3	TT0045519	A	Rug midden	1
2	TT0045517	A	Plooiplaat	1
1	TT0044350	A	CW30 snelhaak spec tiltrotator	2
Pos	PART NO	Rev.	PART NAME	QTY

MATERIAL:		DIMENSION:		REMARK: ZX140													
GENERAL TOLERANCE FOR ANGLE, CHAMFER, FILLET: ISO2768-m				GENERAL TOLERANCE FOR SHAPE AND PLACE: ISO2768-K													
GENERAL TOLERANCE FOR LENGTH DIMENSIONS: ISO2768-m ∇				GENERAL TOLERANCE FOR WELD DIMENSIONS: DIN8570 T1 class 'B' ∇													
\geq	0.5	3	6	30	120	400	1000	2000	\geq	2	30	120	400	1000	2000	4000	8000
\leq	3	6	30	120	400	1000	2000	4000	\leq	30	120	400	1000	2000	4000	8000	12000
TOL.	± 0.1	± 0.1	± 0.2	± 0.3	± 0.5	± 0.8	± 1.2	± 2	TOL.	± 0.1	± 0.2	± 0.2	± 0.3	± 0.4	± 0.6	± 0.8	± 10



WEIGHT	DATE 28-Jun-2019	DRAWN dylan	SCALE 1/1	Page 1/1	A3
TITLE Kofferbak 1.6m tiltrotator Pladdet			DRAWING NO. TT0050862		
Rev. A					