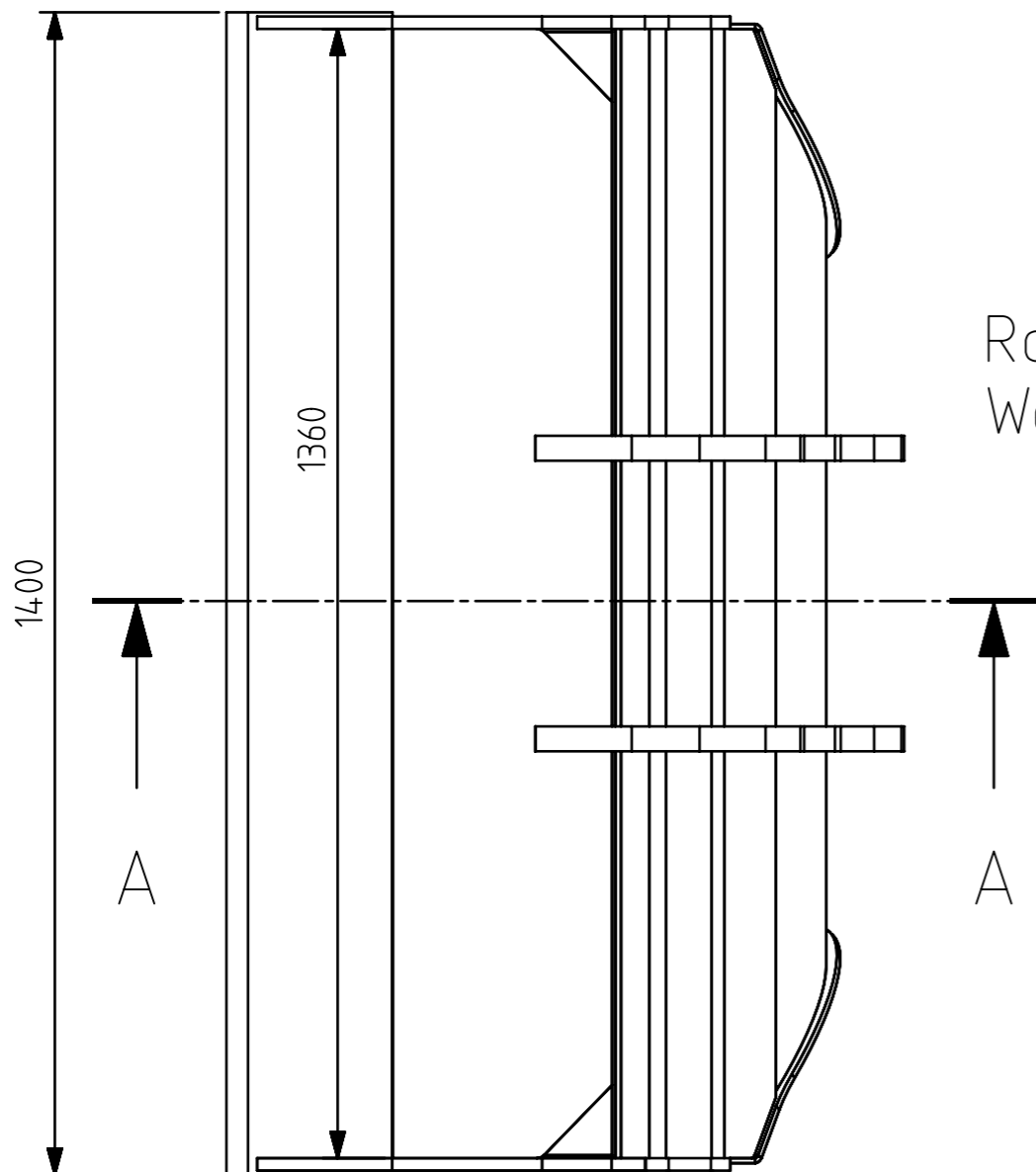
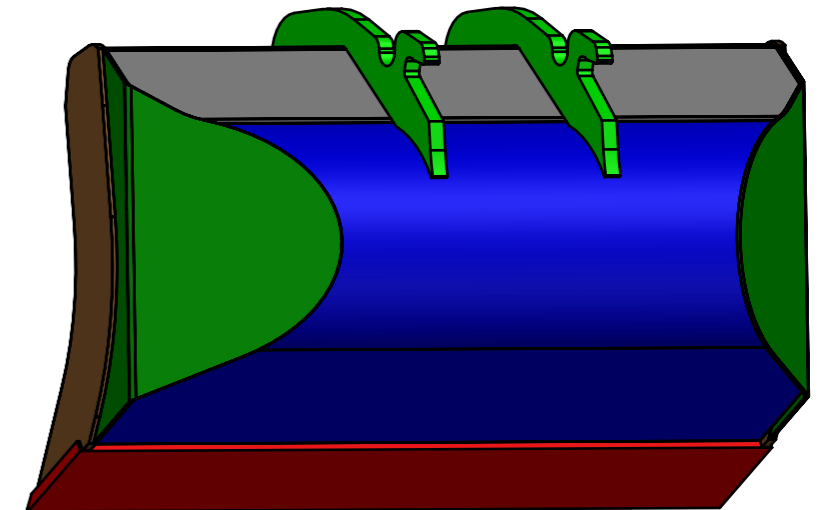
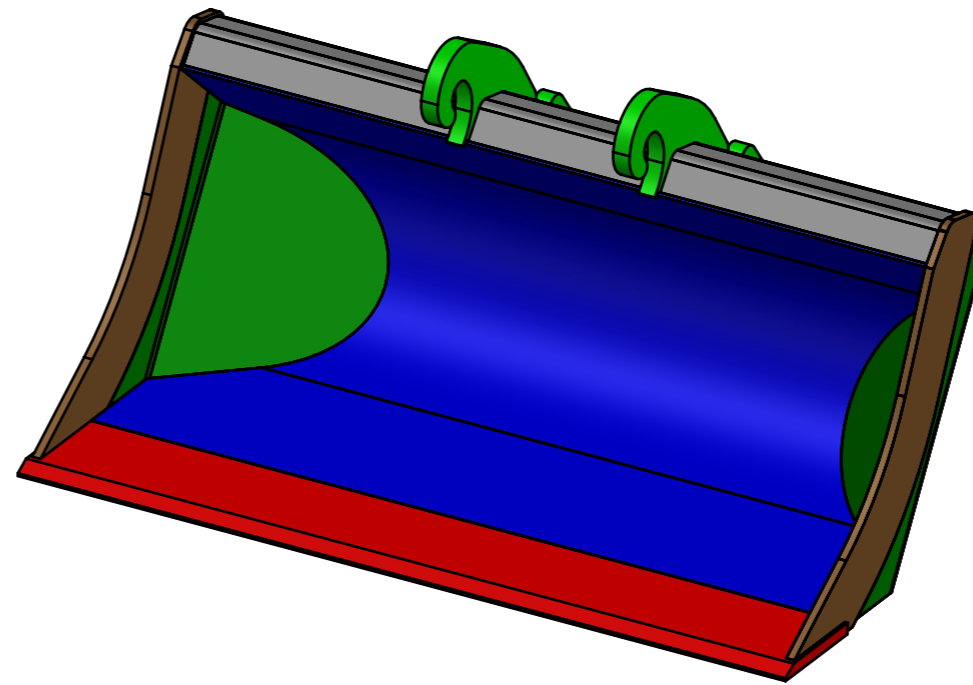
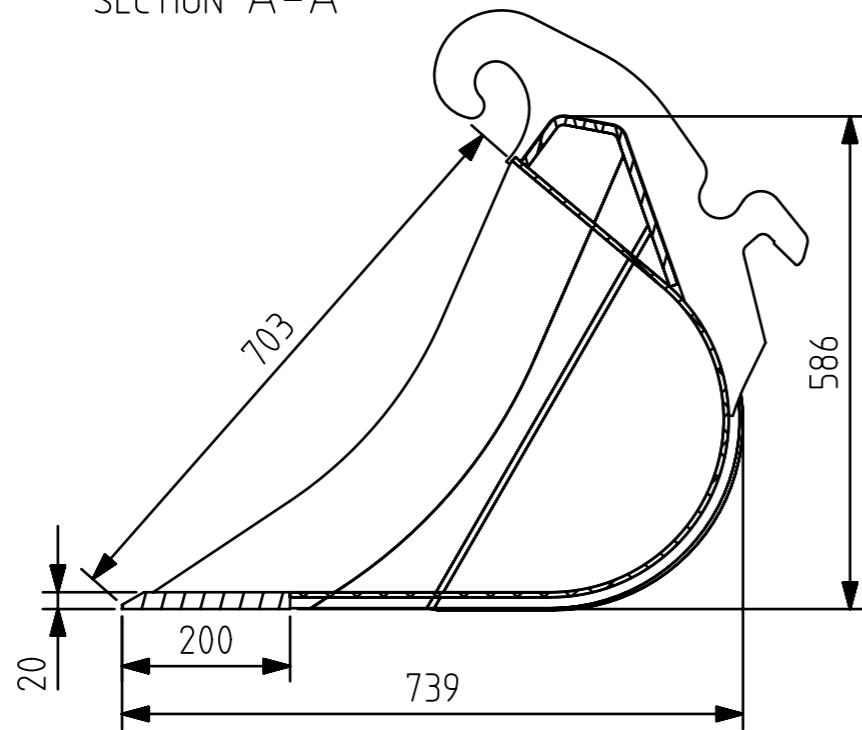


SECTION A-A



Rated capacity (SAE): $V_r=406L$
 Weight: 200kg

6	TT0021460	A	voorkant	2
5	TT0019615-7000	A	CW10-300 baktype7	2
4	TT0057820	A	Zijkant links	1
3	TT0057821	A	Zijkant rechts	1
2	TT0057822	A	Bodemplaat	1
1	TT0057823	A	Rug	1
Pos	PART NO	Rev.	PART NAME	QTY

MATERIAL: staal				DIMENSION:				REMARK: KX080/ZX85										
GENERAL TOLERANCE FOR ANGLE, CHAMFER, FILLET: ISO2768-m								GENERAL TOLERANCE FOR SHAPE AND PLACE: ISO2768-K										
GENERAL TOLERANCE FOR LENGTH DIMENSIONS: ISO2768-m ∇								GENERAL TOLERANCE FOR WELD DIMENSIONS: DIN8570 T1 class 'B' ∇										
≥	0,5	3	6	30	120	400	1000	2000	4000	≥	2	30	120	400	1000	2000	4000	8000
∇	3	6	30	120	400	1000	2000	4000	∇	30	120	400	1000	2000	4000	8000	12000	
TOL.	±0,1	±0,1	±0,2	±0,3	±0,5	±0,8	±1,2	±2,0	TOL.	±1	±2	±2	±3	±4	±6	±8	±10	



WEIGHT	DATE	DRAWN	SCALE	Page	A3
----- kg	03-Dec-2020	dylan	1/1	1/1	
TITLE			DRAWING NO.		Rev.
Kofferbak type 7 1.4m tiltrotator			TT0057812		A