

Specifications

Lattice Boom Crawler Cranes			SCX550E	SCX700E	SCX800E	SCX550	SCX800-2	SCX800A-3
Liftcrane	Max. lifting cap.	t × m	55 × 3.7	70 × 3.7	80 × 3.2	55 × 3.7	80 × 3.3	80 × 3.3
	Basic boom length	m	10.0	12.0	9.5	10.0	9.5	9.5
	Max. boom length	m	52.7	54.0	54.5	52.0	54.5	54.5
Luffing towercrane	Max. lifting cap.	t × m	—	—	—	11.4 × 10.3	—	—
	Max. tower length	m	—	—	—	40.0	—	—
Engine	Make		Isuzu	Isuzu	Isuzu	Isuzu	Isuzu	Cummins
	Model		6HK1	6HK1	6HK1	4HK1X	6HK1X	QSB6.7
	Rated output	kW	140	140	140	147	212	201
Swing speed		min ⁻¹	3.7	3.0	3.0	3.7	3.9	5.0
Travel speed		km/h	1.5	1.3	1.3	2.0	1.8	1.8
Ground contact pressure		kPa	67.0	75.5	80.0	71.9	89.0	87.0
Operating weight		t	50.0	64.8	72.5	52.5	75.1	76.0

Lattice Boom Crawler Cranes			SCX800HD-2	SCX900HD-2	SCX1000A-3	SCX1200-3	SCX1200HD-2	SCX1500A-3
Liftcrane	Max. lifting cap.	t × m	80 × 3.4	90 × 4.0	100 × 3.8	120 × 5.0	120 × 5.0	150 × 4.5
	Basic boom length	m	9.5	12.0	12.0	15.0	15.0	15.0
	Max. boom length	m	54.5	60.0	60.0	75.0	72.0	75.0
Luffing towercrane	Max. lifting cap.	t × m	—	—	—	35.0 × 9.3	—	—
	Max. tower length	m	—	—	—	51.35	—	—
Engine	Make		Isuzu	Mitsubishi	Cummins	Cummins	Mitsubishi	Cummins
	Model		6HK1X	6M70-TL	QSB6.7	QSB6.7	6M70-TL	QSB6.7
	Rated output	kW	212	272	201	200.6	272	201
Swing speed		min ⁻¹	5.1	2.5	2.3	1.7	1.9	1.7
Travel speed		km/h	1.8	2.1	2.0	1.5	1.7	1.5
Ground contact pressure		kPa	91.0	96.0	117.0	91.0	97.0	103.0
Operating weight		t	76.3	85.0	104.0	122.0	131.0	139.0

Lattice Boom Crawler Cranes			SCX2000A-2	SCX2800-2	SCX3500-3	6000SLX STD	6000SLX SL-B
Liftcrane	Max. lifting cap.	t × m	200 × 4.6	275 × 4.3	350 × 5.0	500 × 6.0	550 × 8.0
	Basic boom length	m	15.2	15.2	18.0	24.0	36.0
	Max. boom length	m	85.4	91.4	72.0	108.0	126.0
Luffing towercrane	Max. lifting cap.	t × m	27.0 × 14.0	80.0 × 9.3	100.0 × 12.4	210.0 × 13.0	250.0 × 18.0
	Max. tower length	m	57.9	60.9	60.0	72.0	84.0
Engine	Make		Mitsubishi	Mitsubishi	Cummins	Isuzu	
	Model		6M70-TL	6M70-TL	QSL9	6WG1	
	Rated output	kW	272	272	272	397.0	
Swing speed		min ⁻¹	1.7	1.5	0.86	1.0	0.5
Travel speed		km/h	1.2	1.1	0.9	1.5 / 1.3 / 0 / 6	
Ground contact pressure		kPa	111.0	124.0	136.0	128 ^(※1)	144 / 961 ^(※1,2)
Operating weight		t	186.0	223.0	321.0	402.0 ^(※1)	707.0 ^(※1)

Telescopic Boom Crawler Crane			650TLX
Liftcrane	Max. lifting cap.	t × m	65 × 3.0
	Basic boom length	m	10.0
	Max. boom length	m	30.1
Engine	Make		Isuzu
	Model		6HK1
	Rated output	kW	210
Swing speed		min ⁻¹	4.5
Travel speed		km/h	1.7
Ground contact pressure		kPa	92.4
Operating weight		t	70.9

- Notes:
- 1. The model named with HD is suitable for heavy duty work with bigger winch and engine. The bigger rated line pull winch is also optionally available for SCX800A-3/SCX1000A-3/SCX1500A-3.
 - 2. Operating weight indicates the figure under liftcrane application with basic boom, std. counterweight(s), std. track shoe and std. /opt. hook block of nominal lifting capacity, and ground pressure is defined under the said operating weight respectively.
 - 3. Line speed varies under load and operating conditions.
 - 4. The figures under the specification with heavy duty basic boom and optional 1524mm width shoes.^(※1)
 - 5. The figures ○/○ indicates track shoes/buggy tires.^(※2)
 - 6. Each model meets following engine emission standards.
SCX550E/700E/800E : EU Stage II
650TLX : EU Stage III B
SCX800A-3/SCX1000A-3/SCX1200-3/SCX1500A-3/SCX3500-3 : EU Stage IV (Stage III A Engine is available for SCX1000A-3/1200-3/1500A-3/3500-3)
Other models : EU Stage III A

- We are constantly improving our products and therefore reserve the right to change designs and specifications without notice.
- Units in this catalog are shown under International System of Unit ; the figures in parenthesis are under Gravitational System of Units as old one.
- Illustrations may include optional equipment and accessories, and may not include all standard equipment.

“HSC” throughout this catalog. “HSC CRANES” is a brand of Sumitomo Heavy Industries Construction Cranes Co., Ltd.

Address inquires to :

Sumitomo Heavy Industries Construction Cranes Co., Ltd.

9-3, Higashi-Ueno 6-chome, Taito-ku, Tokyo 110-0015, Japan

Phone: 81-3-3845-1387 Facsimile: 81-3-3845-1394

<http://www.hsc-cranes.com>



PRODUCT

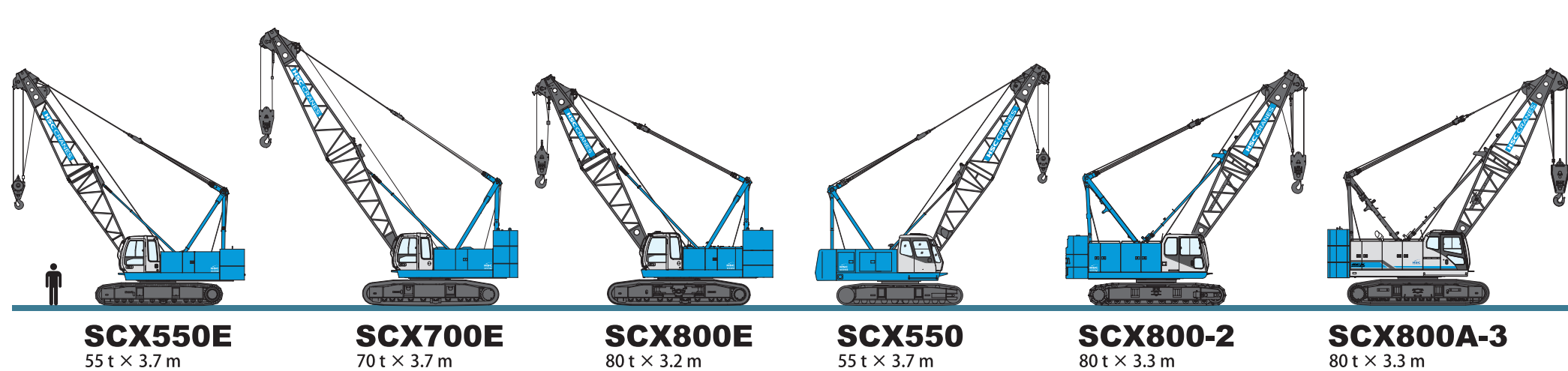
LINE UP

CATALOG

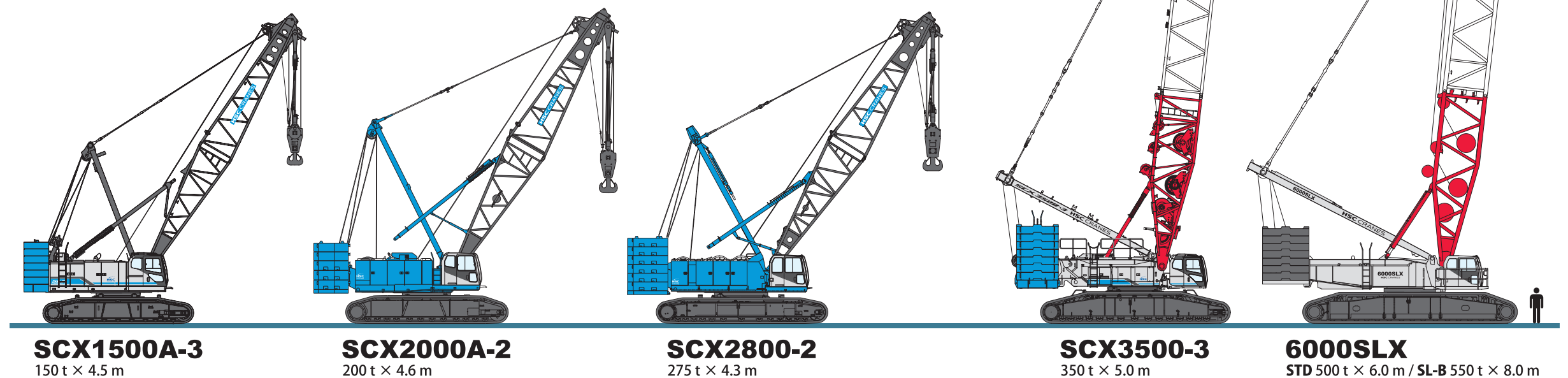
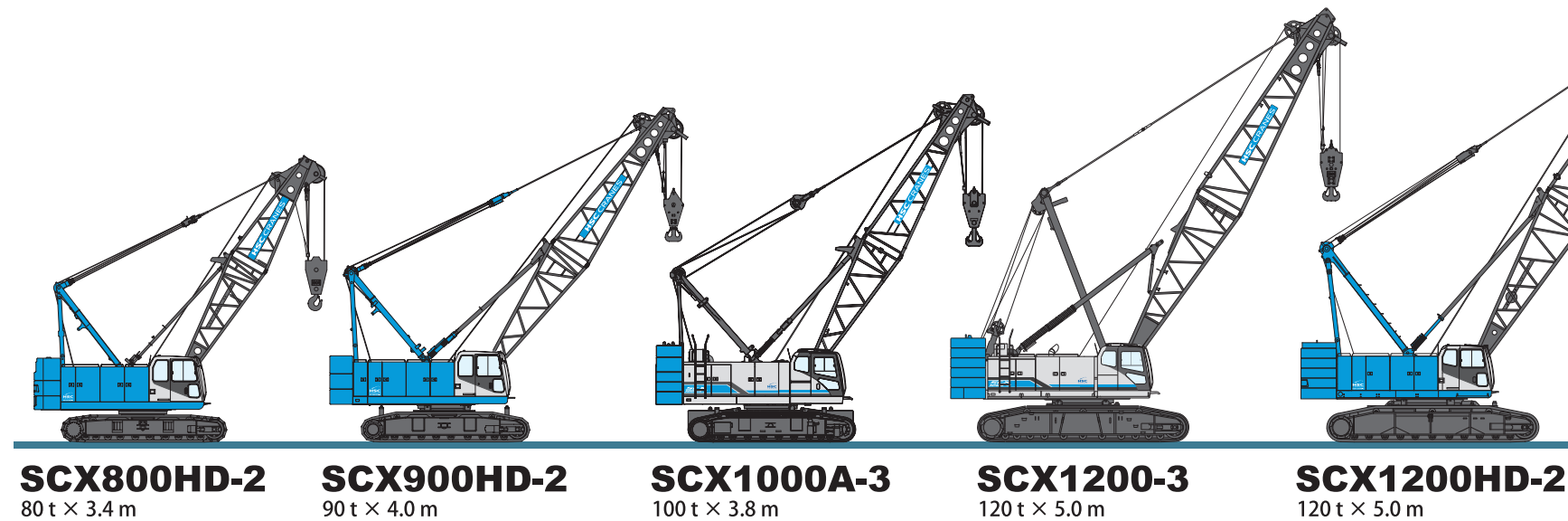
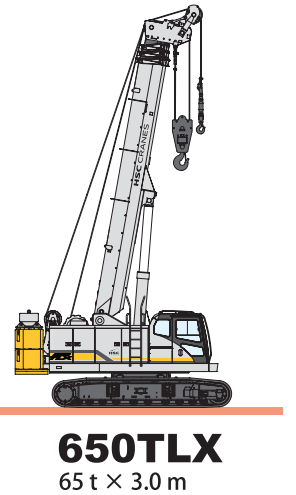
Sumitomo Heavy Industries Construction Cranes Co., Ltd.

Excellent lifting performance & work efficiency. Delivering satisfaction to customers around the world.

Lattice Boom Crawler Cranes



Telescopic Boom Crawler Crane



SCX1500A-3

6000SLX