

**KUBOTA COMPACT
TRACK LOADER**

SVL75-3



Engine output:
74.2 PS / 54.6 kW

Machine weight:
4,271 kg

Easy to use, powerful and ultra reliable.

The SVL75-3 is everything you would expect from a Kubota.

Advanced hydraulics, unique safety and productivity features with innovative technology combine in a machine that is as capable as it is desirable.



• OUTSTANDING PERFORMANCE AND PRODUCTIVITY



KUBOTA COMPACT TRACK LOADER

SVL75-3

- Rated operating capacity (35% of tipping load): 1,163 kg
- Rated operating capacity (50% of tipping load): 1,661 kg
- Bucket breakout force: 2,710 kg
- Operating weight (Including operator weight 75 kg): 4,346 kg

PERFORMANCE

Advanced Kubota engine and hydraulic system ensure superior performance and operability. The SVL75-3 is ready to take on any task.

ADVANCED MULTIFUNCTION VALVE (AMV)

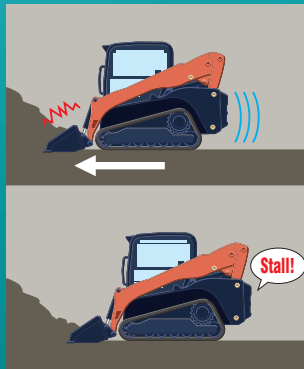
The SVL75-3's hydraulic system features an innovative Advanced Multifunction Valve that provides smooth movements of all hydraulic functions when operated simultaneously. The AMV now allows operators to run the AUX hydraulics, bucket, and loader arm functions together without stalling.

ELECTRONIC TRAVEL TORQUE MANAGEMENT

Electronic Travel Torque Management System lets you work faster with more power. The ECU constantly monitors the load of the machine to optimally control hydraulic pump output according to the load, preventing engine stalls for smoother operation even under severe conditions.

HYDRAULIC PILOT CONTROL

This ensures consistent oil flow which allows smooth and dependable operator control and stability.

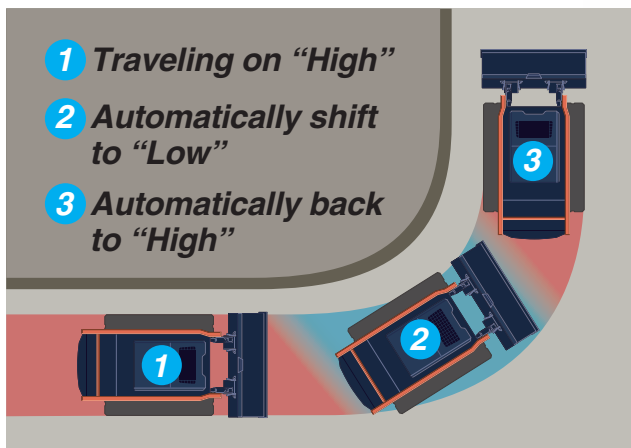


COOLING FAN MANAGEMENT

The SVL75-3's cooling fan management system reduces the engine's cooling fan power requirement during high-load work, making that power available for power-hungry tasks while keeping the cooling function.

AUTO-SHIFT

The auto-shift system enables automatic travel shift from high to low when turning in order to travel smoothly.



TRACK RESPONSE

Operators now have the ability to change their travel response sensitivity through the use of the new LCD panel. The SVL75-3 offers you a choice of three track response settings: Mild, Normal, and Quick.



HIGHER HINGE PIN HEIGHT

The tip of the arm is optimally shaped for a tall hinge pin height of 3,117 mm making it easy to dump into any container or truck.

3,117mm



STANDARD SELF-LEVELING FUNCTION

This feature helps keep the bucket or fork in a horizontal position without the need to manually adjust the angle during lifting. Can be turned on or off with click of a switch.

HEAT-UP CIRCUIT

Rapid warming of engine and other vital components allows for smooth starting and reliable operation even in cold weather conditions.

COMFORT

Spacious cab, advanced ergonomics, air conditioning as standard making working in the most demanding conditions comfortable.



ONE-PIECE SEALED AND PRESSURISED CAB

The new one piece cab helps prevent dirt, dust, rain, and other debris from entering the operator space. Furthermore, noise is kept down to let you work for long hours with minimal fatigue.

SLIDING FRONT DOOR

The unique Up and Over sliding front door can be opened regardless of the position of the bucket or loader arms. Also, its wide cab entrance makes it easy to get in and out.



HIGH-BACK SEAT

Designed and engineered to fit better and to keep you working longer comfortably, Kubota's high-back seat reduces strain and minimises operator fatigue. It reclines to accommodate your individual posture, and offers weight compensation, retractable high visibility orange seat belt with alert function.

AIR CONDITIONING

Provides optimised airflow for outstanding cooling and heating performance and operator comfort all year round.

SPLIT ARMREST

The design improves operator comfort and operability, reducing fatigue even during long hours of work.

USB PORT

Smartphone charging possible.





HIGH VISIBILITY ROOF PANEL

The larger upper window allows for increased operator visibility when dumping into containers or trucks.



COLOUR LCD TOUCH PANEL WITH JOG DIAL

The SVL75-3's digital colour LCD Touch Panel builds on the success of the Kubota's Intelligent Control System by providing a wide range of functions to keep you aware of the SVL75-3's operating status at all times. This new panel features touch and jog dial enabled controls for quickly selecting operations and functions, as well as easy-to-read indicators and alerts. The panel is positioned to the front right of the operator for excellent visibility and fast access.

A. Machine Status Indicator (such as working function, battery charge indicator etc.)
B. Hydraulic Oil Temperature C. Coolant Temperature D. AUX Mode E. Fuel Level F. Menu Icons



KEYLESS ENGINE START

The engine can be started by entering a 4 digit passcode using LCD Touch Panel and up to 51 user passwords can be set.



RADIO WITH BLUETOOTH

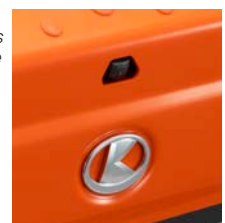
Our new integrated bluetooth radio allows for seamless bluetooth streaming and hands free calling.



REAR VIEW CAMERA*

The integrated rear view camera allows for better rear visibility on the job site.

**Prior to fitment, the machine already satisfies the visibility performance criteria defined in ISO5006. The rear-view camera enhances operator's visibility, but does not replace the need for viewing directly and using the mirrors fitted.*



EASY OPERATION / MAINT

Access to the engine compartment allows for easy and efficient maintenance.



JOG DIAL AND SWITCHES

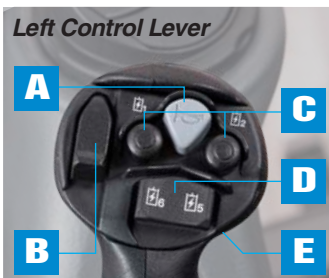
The jog dial and switches are both intuitive and easy to use. Switch panel is back lit for working in dark conditions. Even first-time operators will be able to quickly access all important information.

- A. Home switch
- B. Return switch
- C. Jog dial
- D. Self leveling switch
- E. Working light switch
- F. Beacon light (Opt.) switch
- G. Washer switch
- H. Hydraulic unlock switch
- I. Parking brake switch
- J. AUX port switch
- K. Wiper switch



MULTI-FUNCTION LEVERS

The multi-function levers provide fingertip control of all major machine and attachment operations, letting you keep both hands on the levers at all times for safe and efficient operation. Standard on High-flow models, these levers can also be installed as a kit on Standard flow models.



- A. Horn
- B. Ride Control (Option)
- C. AUX1
- D. AUX3
- E. Travel Speed



- F. Proportional AUX Switch
- G. AUX Hold Switch
- H. AUX2
- I. AUX Mode Change
- J. Float Switch

PRE-CLEANER

Keep dust and dirt away from the engine to reduce maintenance costs.



ACCESSIBLE AIR FILTER

High performance air filter improves engine longevity and reduces down time.



TENANCE

TOP-MOUNTED RADIATOR AND OIL COOLER

Conveniently located on the top of the engine compartment, the radiator components are within easy reach for cleaning and routine maintenance.



- A. Dual Element Air Cleaner
- B. Fuel Filter
- C. Water Separator
- D. Coolant
- E. Battery

UNOBSTRUCTED ENGINE ACCESS

Cover can be removed to improve access.



EQUIPMENT

Standard equipment

Performance
Sliding front door
Travel speed (High)
Advanced Multifunction Valve (AMV)
Auto down shift
Heat-up circuit
Standard Self-leveling function
Track response
Comfort
High-back seat
One-piece sealed and pressurised cab
Air conditioning
Split armrest
Variable fan
LCD colour monitor (7inch)
Touch panel
Jog dial
Keyless engine start
Radio
Bluetooth (hands-free phone)
USB port
Maintenance
Pre-cleaner
Door enclosed fuel tank and easy refill access
Ventilation duct
Safety
Rear view mirror
Rear view camera*
LED lights
Engine start password input
Side mirror

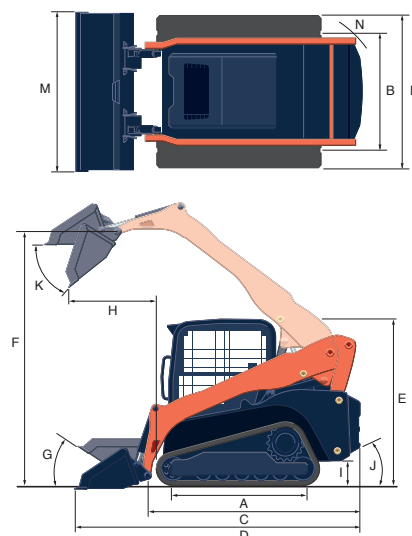
Optional equipment

Performance
Wide track
Hydraulic hitch
High flow
14/7 pin electrical connector (STD for High Flow)
Polycarbonate door
Ride Control
Safety
Front / Rear combination lamp
License lamp
Beacon
Green beacon
Attachment
Bucket (1,730mm, BOE)
Bucket (1,730mm, Teeth)
Bucket (1,880mm, BOE)
Bucket (1,880mm, Teeth)
Pallet Fork (1,200mm)
Pallet Fork (1,500mm)

* Prior to fitment, the machine already satisfies the visibility performance criteria defined in ISO5006. The rear-view camera enhances operator's visibility, but does not replace the need for viewing directly and using the mirrors fitted.

DIMENSIONS

Model			SVL75-3
A	Length of track on ground	mm	1436
B	Track gauge	mm	1355
C	Length w/o bucket	mm	2844
D	Length w/bucket on ground	mm	3645
E	Height to top of cab	mm	2078
F	Bucket hinge pin height at max. lift	mm	3117
G	Rollback angle at carry position	degree	27
H	Reach at max. lift and dump	mm	1041
I	Ground clearance	mm	296
J	Departure angle	degree	31
K	Max. dump angle	degree	39
L	Vehicle width Standard track / Wide track	mm	1675 / 1755
M	Width with bucket	mm	1730 / 1880
N	Turning radius from center-machine rear	mm	1468



SPECIFICATIONS

Model			SVL75-3	
Manufacturer			Kubota	
Type of operator station			Closed CAB	
Engine				
Model			V3307-CR-T-EW09M	
Output (ISO 14396:2002)		PS (kW) / rpm	74.2 (54.6) / 2400	
Displacement		cc	3331	
Number of Cylinders			4	
Bore×Stroke		mm	94 × 120	
Loader Performance*1				
Rated operating capacity-35% tipping load		kg	1163	
Rated operating capacity-50% tipping load		kg	1661	
Breakout force	Bucket	kg	2710	
	Lift arm	kg	2113	
Undercarriage				
Track Width	Standard track / Wide track		mm	320 / 400
Ground pressure		Standard	kPa	33.8
Track rollers (per side)				4
Travel speed	Low	km / h		9
	High	km / h		13.7
Traction force		kN		43.04
Min. ground clearance		mm		296
Hydraulic System				
Aux. hydraulic flow	Standard flow	ℓ / min		72.7
	High flow	ℓ / min		112.8
Aux. hydraulic pressure		MPa		22.0
Noise level				
Sound pressure level (LpA / LwA)		dB		78 / 103
Bucket Capacity				
Standard bucket		m³		0.44 / 0.48
Operating weight (Includes operator weight 75kg)		kg		4346
Vibration				
Hand-arm system (ISO 5349-2:2001)		m/s² RMS		< 2.5
Whole body (ISO 2831-1:1997)		m/s² RMS		0.81

^{*1} With general purpose bucket 213kg (width 1880mm).

* Specification varies from country to country, please contact your local dealer.

Fluorinated greenhouse gases

Air conditioner gas contains fluorinated greenhouse gases.

CAB model	Industrial designation	Quantity (kg)	CO ₂ equivalent (ton)	GWP
SVL75-3	HFC-134a	1.05	1.51	1430

(Global Warming Potential: GWP)



KUBOTA EUROPE S.A.S.

19, rue Jules Vercauysse
Zone Industrielle - CS50088
95101 Argenteuil Cedex France
Téléphone : (33) 01 34 26 34 34
Télécopieur : (33) 01 34 26 34 99



<https://www.kubota-eu.com>

