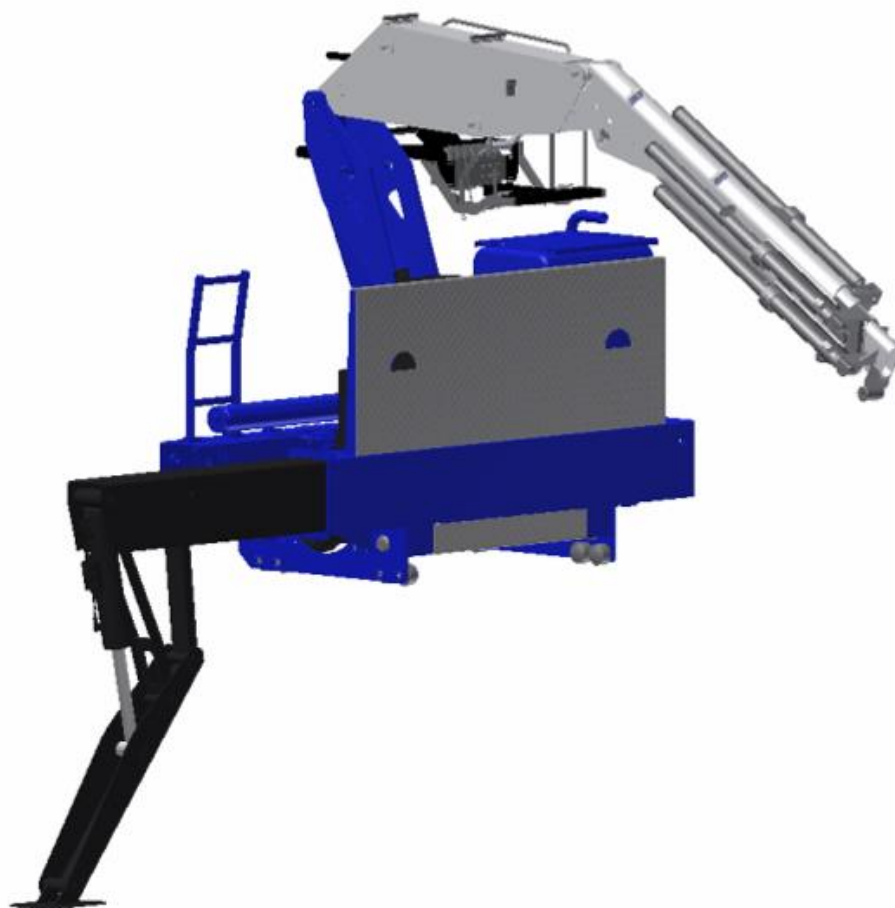


KENNIS 14-R

TECHNISCHE SPECIFICATIE / TECHNICAL SPECIFICATIONS



 **KENNIS**
CRANES BY HYVA

Kennis 14-R

Technische Specificatie / Technical Specifications

Technische data, Technical data,

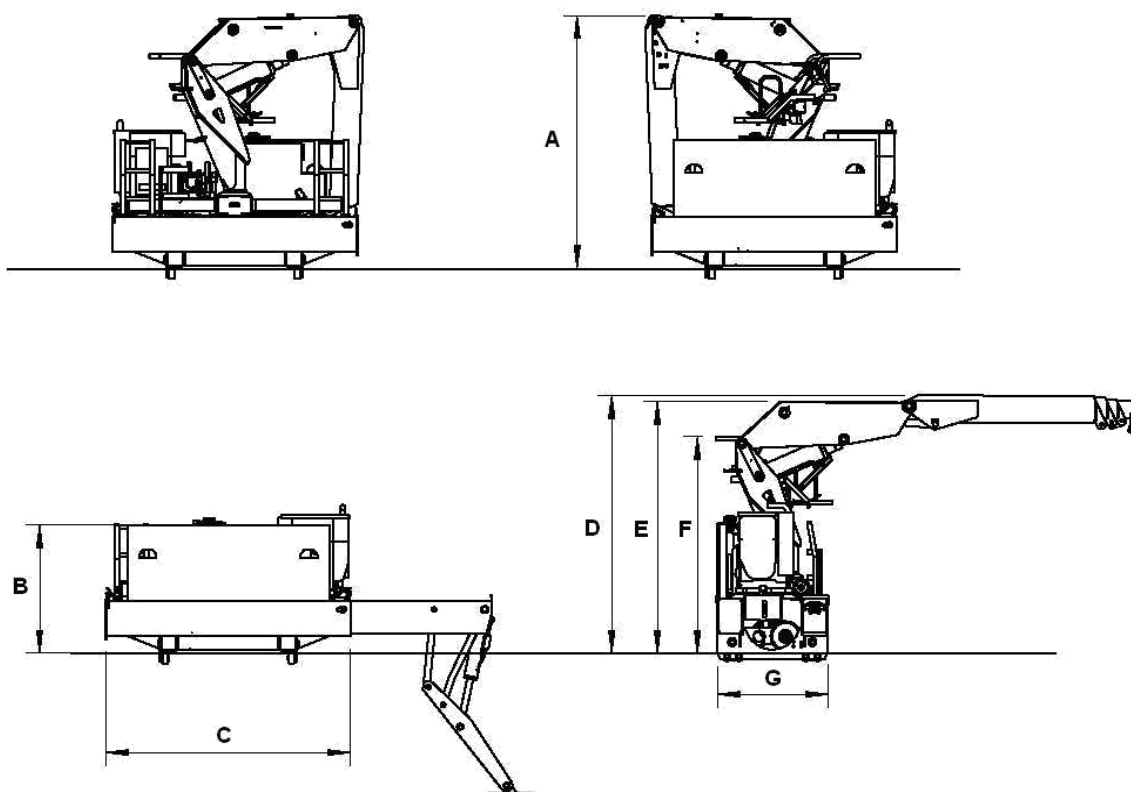
		14-R/50-1	14-R/60-2	14-R/71-3	14-R/84-4
Maximaal dynamisch moment, Max dynamic moment	daNm	18100			
Maximale steunpoot belasting hydr. steunpoten Max force on stabilizer leg hydr. stabilizer	daNm	6700			
Hydraulische steunpoten, hydraulic stabilizers Max standaard steunpoot druk op de grond Max standard stabilizer pressure on the ground	daNm	8			
Maximale steunpoot belasting, Max force on stabilizer leg	daNm	7650			
Mechanische steunpoten, Mechanical stabilizer Max standaard steunpoot druk op de grond Max standard stabilizer pressure on the ground	daNm	17			
Hydraulisch bereik, Hydraulic reach,	m	5.00	6.00	7.10	8.40
Opvouwbaar, Foldable,	Y/N	Y	Y	Y	Y
Zwenkmoment, Slewing moment,	daNm	2220			
Zwenkbereik, Slewing angle,	°	400			
Rijsnelheid, Driving speed.	m/s	0.5			
Gewicht standaard kraan, Weight basic crane. (± 5%)	kg	2700	2800	2900	3000
Werkdruk, Working pressure,	bar	260			
Max. pompopbrengst, Max. Oil capacity,	l/min	Continu variabel			
Benodigd vermogen, Required power,	kW	22			
Olietankinhoud, Oiltankcapacity,	l	100			
Dieseltank inhoud, Dieseltank capacity,	l	32			
Spoorbreedtes, Track,	mm	1300 -2250			
Flensdikte, flangethickness,	mm	20			
Normen, Design standard		DIN 15018 H1-B3 EN12999			

Steunpoten, stabilizer,	Maximale afstempelbasis, Max. stabilizer spread (mm)	Extra gewicht, Additional Weight, (± 5%) (kg)
Mechanische steunpoten, Mechanical stabilizers	4730	200
Volautomatische steunpoten, Full automatic stabilizers	5400	600

Kennis 14-R

Technische Specificatie / Technical Specifications

Afmetingen, Dimensions,



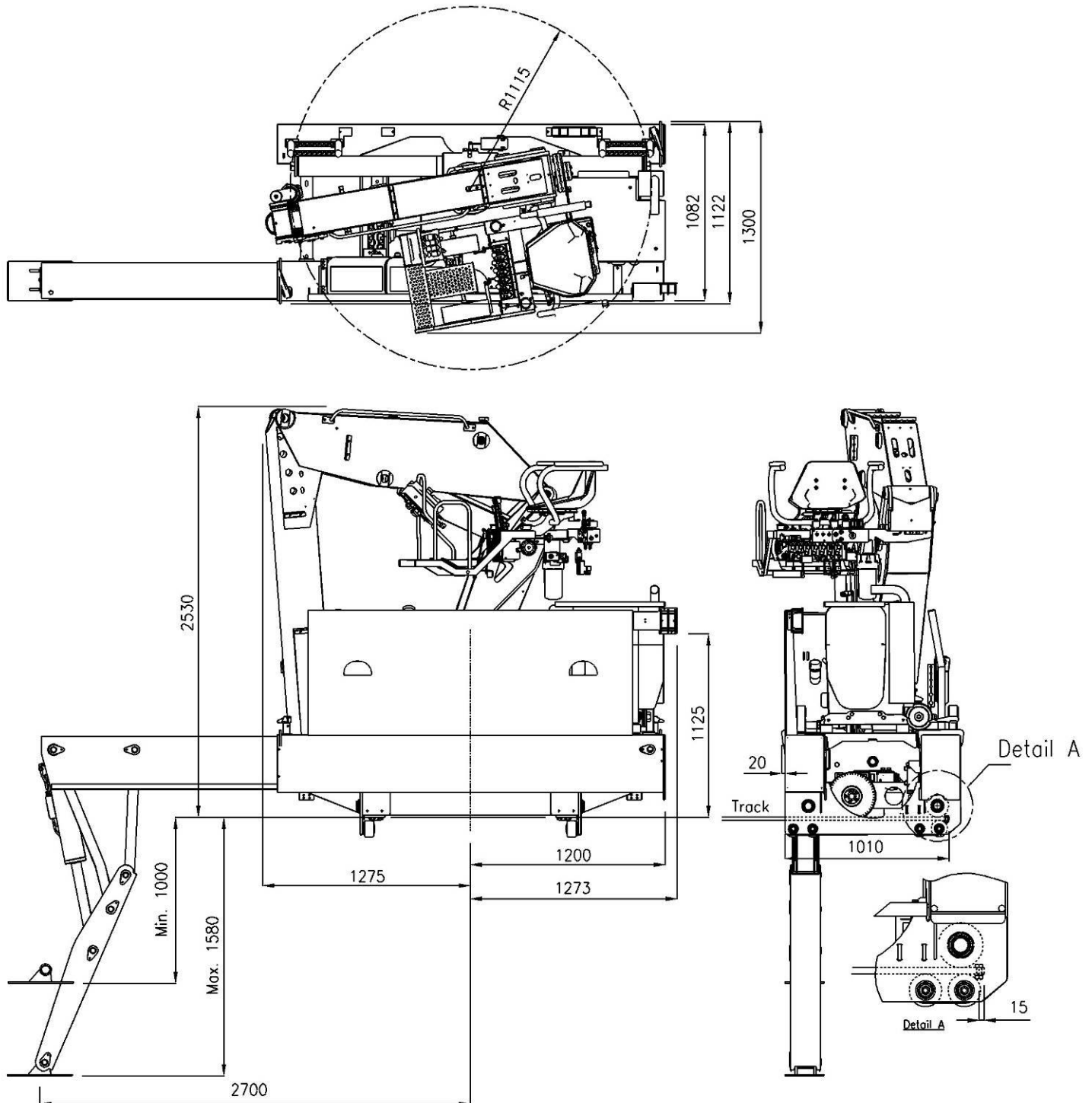
	14-R/50-1	14-R/60-2	14-R/71-3	14-R/84-4
A (mm)	2530	2440	2530	2570
B (mm)	1275	1275	1275	1275
C (mm)	2400	2400	2400	2400
D (mm)	2580	2580	2580	2580
E (mm)	2515	2515	2515	2515
F (mm)	2180	2180	2180	2180
G (mm)	1082	1082	1082	1082
G* (mm)	1010	1010	1010	1010
Trailerheight (mm)		1430		

*) Kraan achterop tegen stopbout geplaatst
Crane parked at the back of the trailer against the stop bolt

Kennis 14-R

Technische Specificatie / Technical Specifications

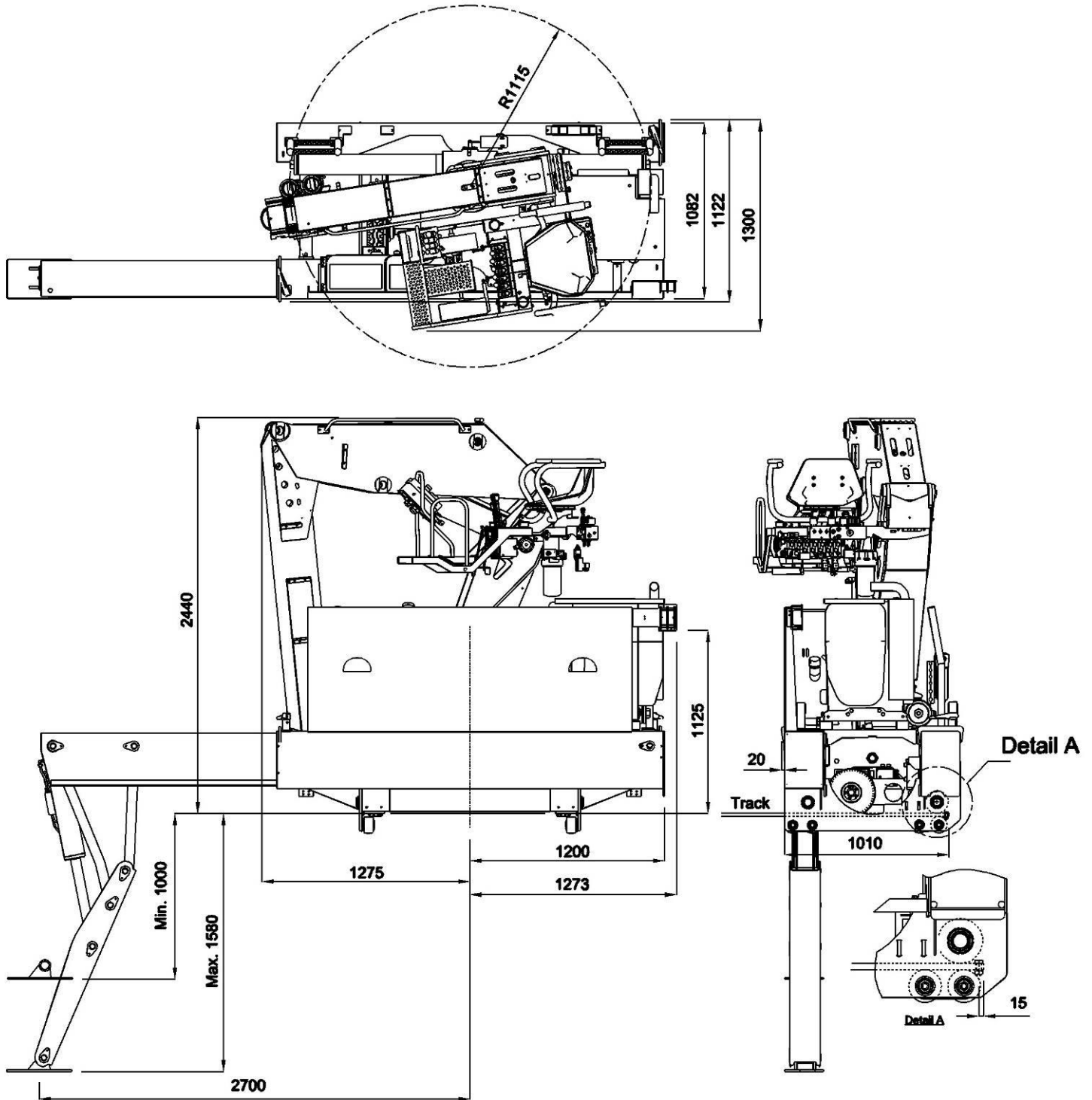
Afmetingen, Dimensions 14-R/ 50-1



Kennis 14-R

Technische Specificatie / Technical Specifications

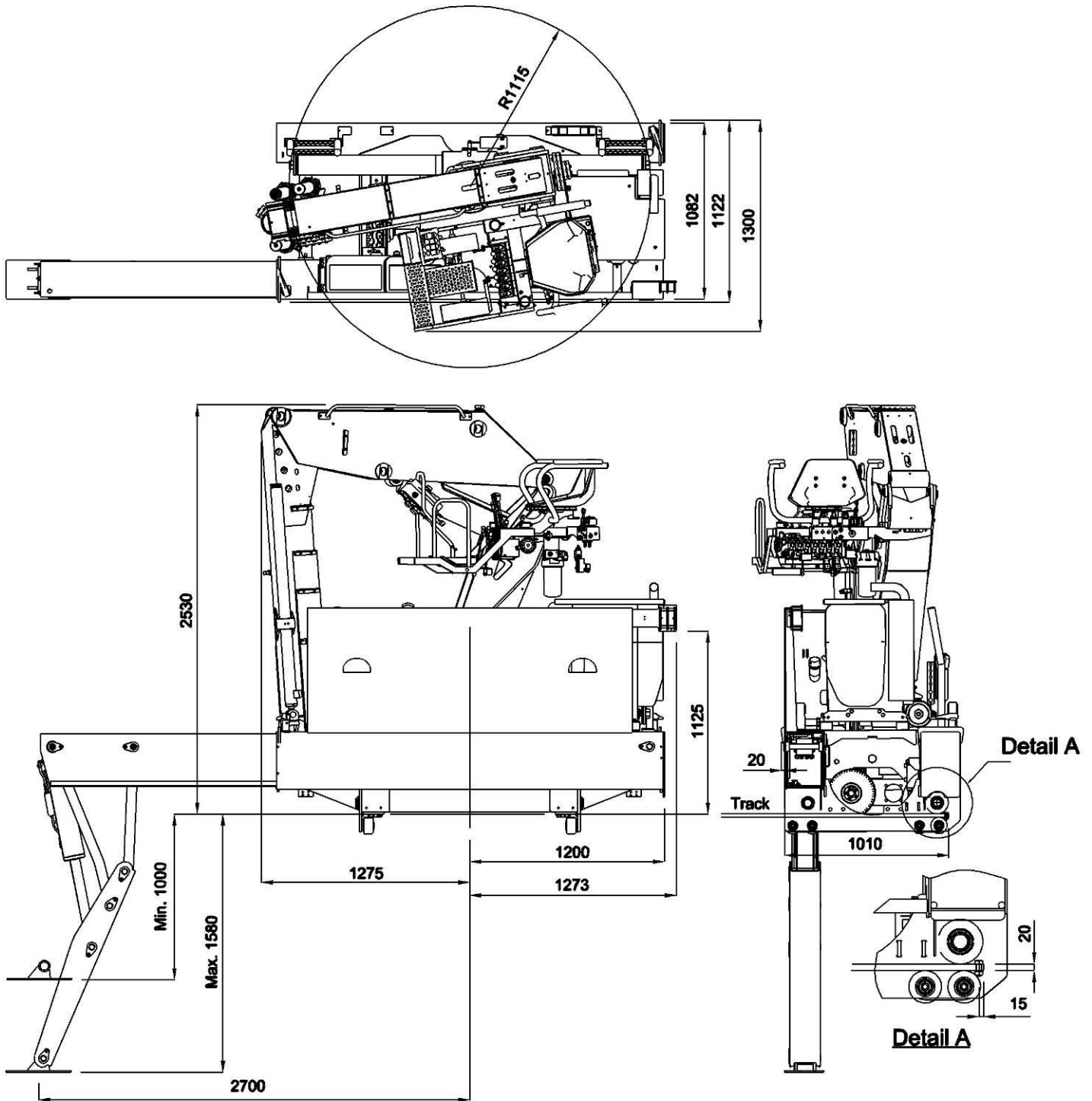
Afmetingen, Dimensions: 14-R/ 60-2



Kennis 14-R

Technische Specificatie / Technical Specifications

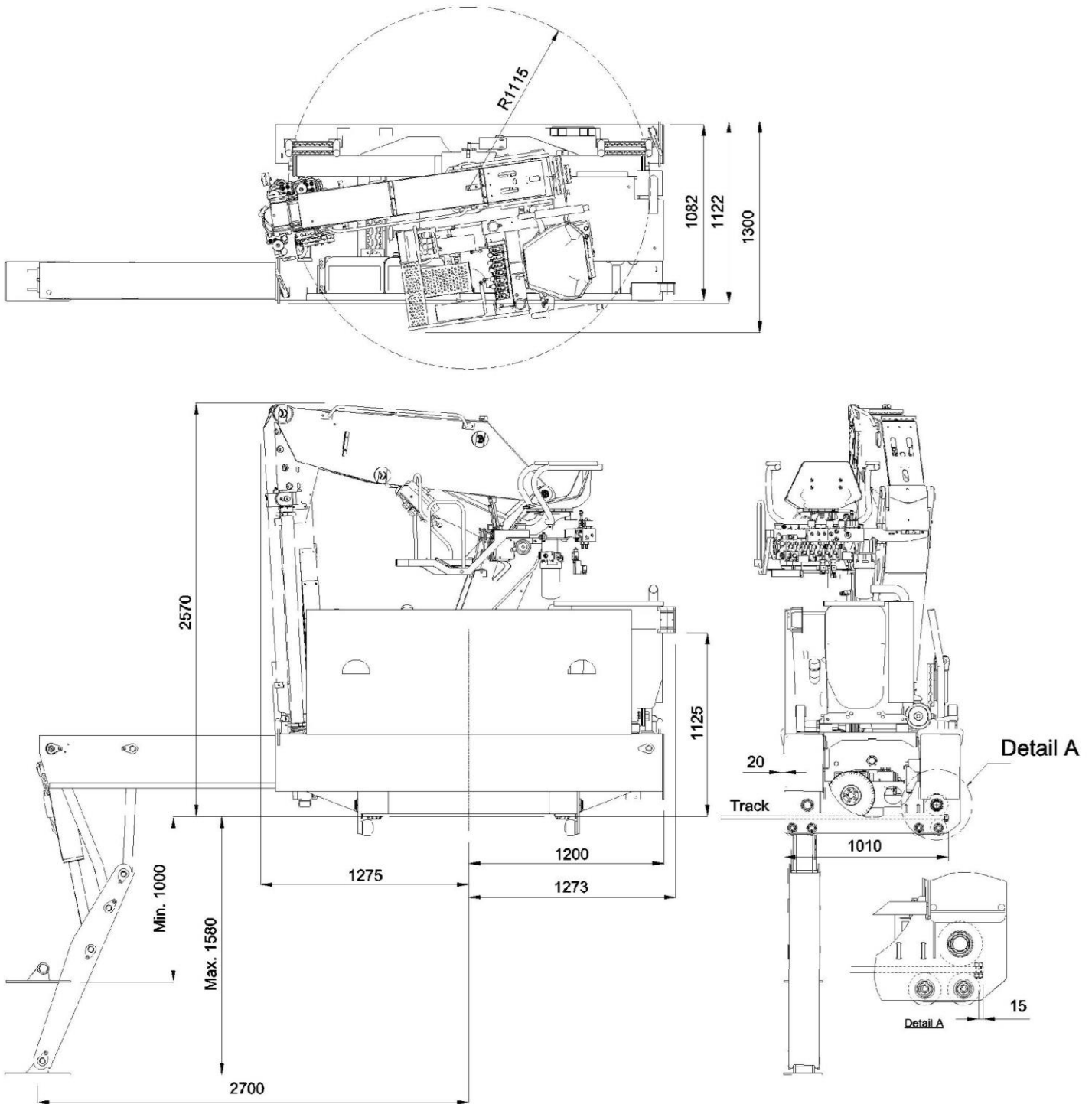
Afmetingen, Dimensions: 14-R/ 71-3



Kennis 14-R

Technische Specificatie / Technical Specifications

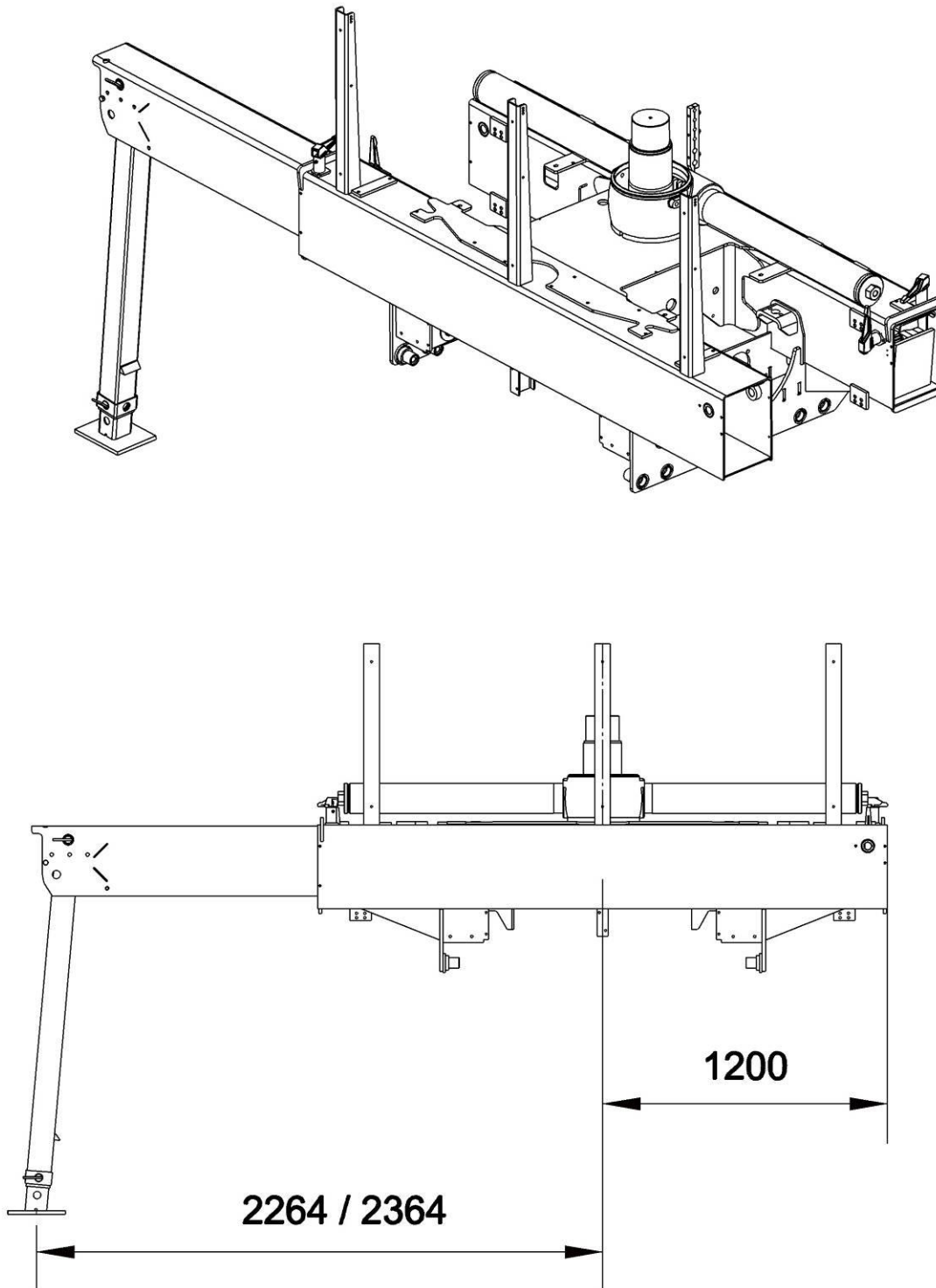
Afmetingen, Dimensions: 14-R/ 84-4



Kennis 14-R

Technische Specificatie / Technical Specifications

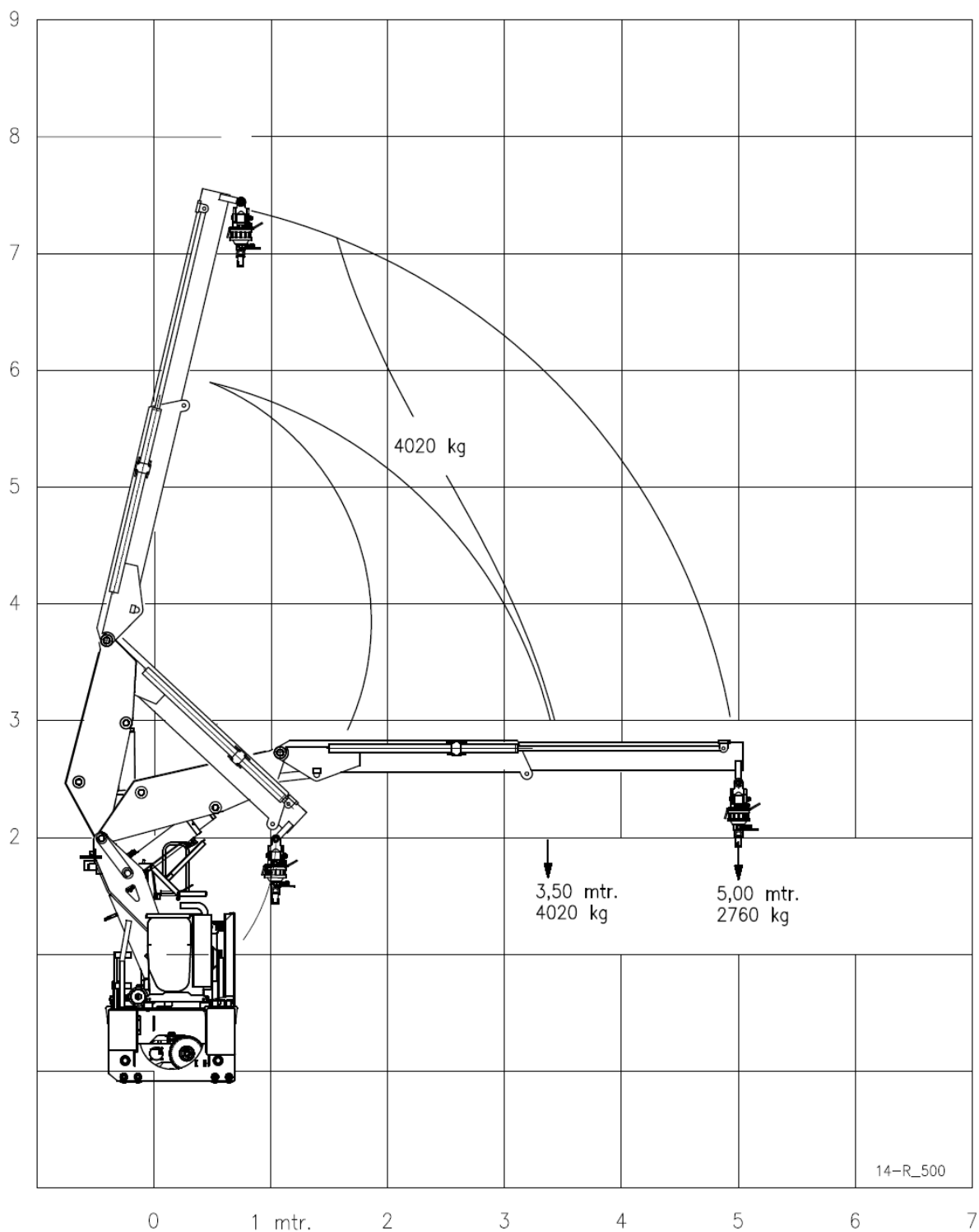
Afmetingen mechanische steunpoot, Dimensions mechanical stabilizer



Kennis 14-R

Technische Specificatie / Technical Specifications

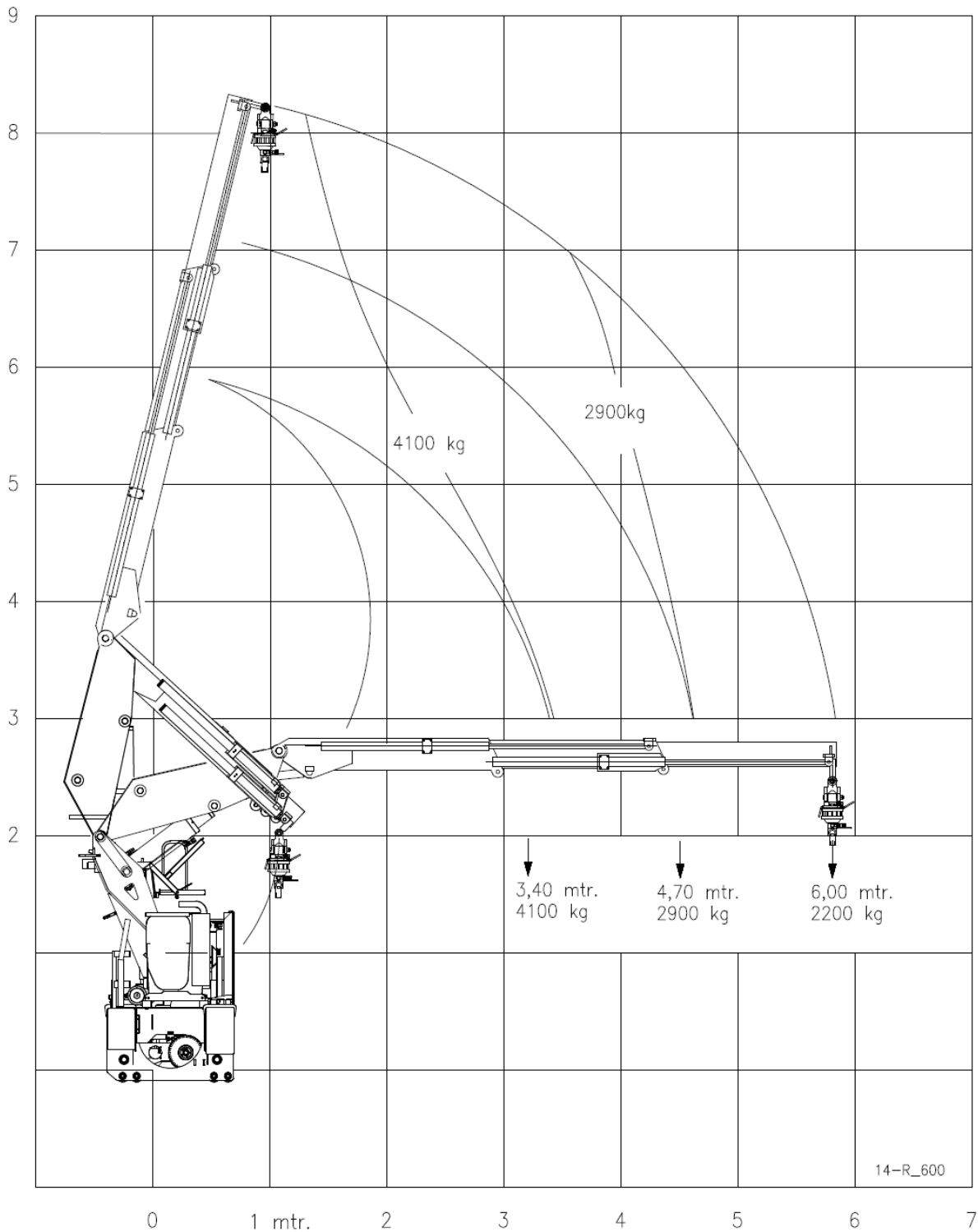
Lastdiagram, Load diagram: 14-R / 50-1



Kennis 14-R

Technische Specificatie / Technical Specifications

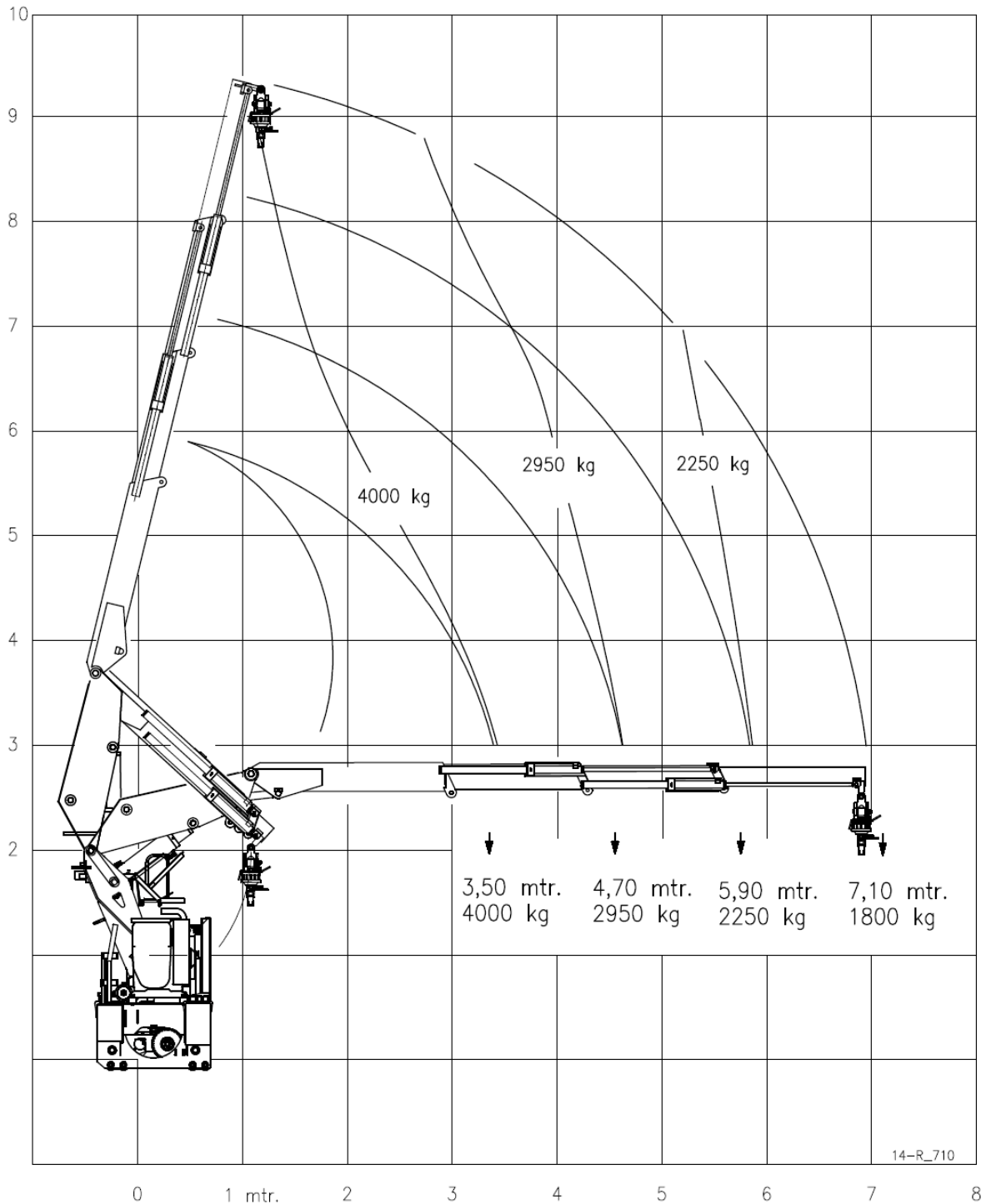
Lastdiagram, Load diagram: 14-R / 60-2



Kennis 14-R

Technische Specificatie / Technical Specifications

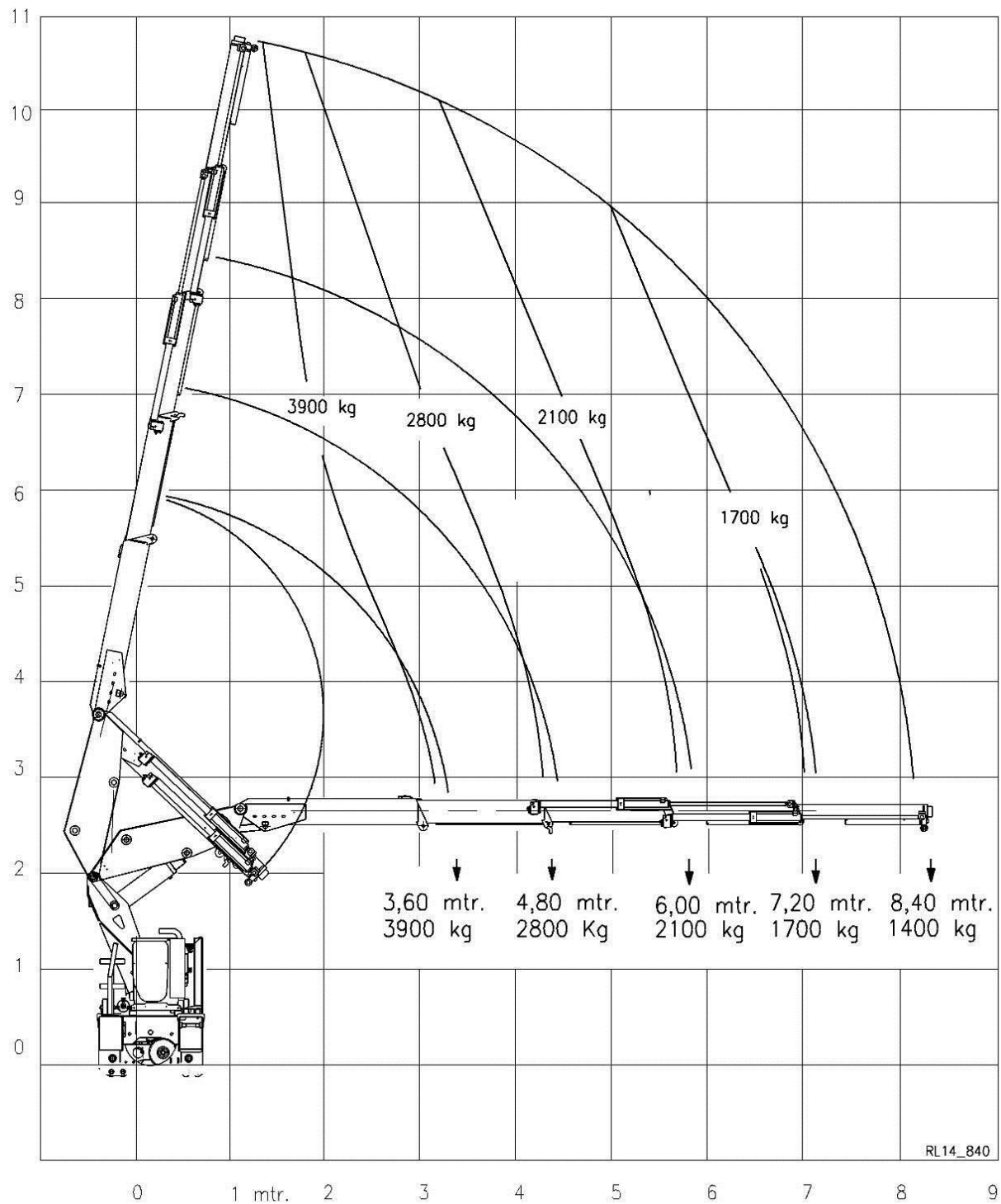
Lastdiagram, Load diagram: 14-R / 71-3



Kennis 14-R

Technische Specificatie / Technical Specifications

Lastdiagram, Loaddiagram: 14-R / 84-4

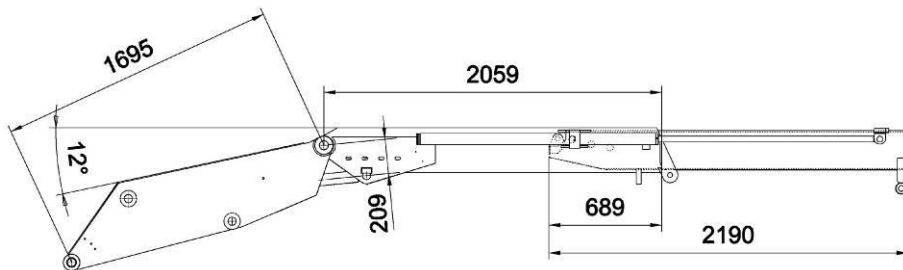


Kennis 14-R

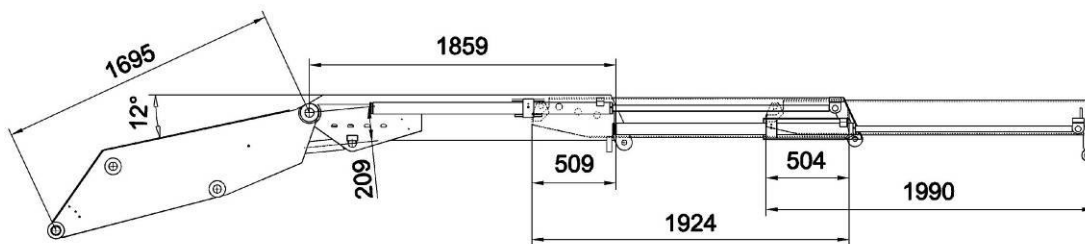
Technische Specificatie / Technical Specifications

Giek – afmetingen, Boom - Dimensions

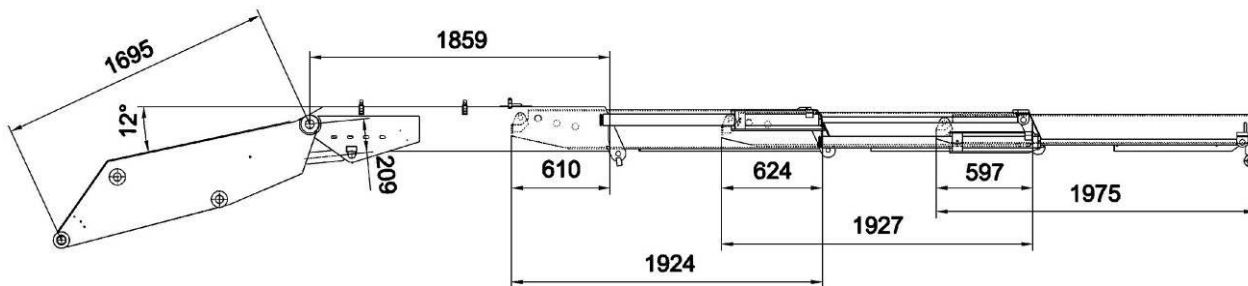
14-R / 50-1



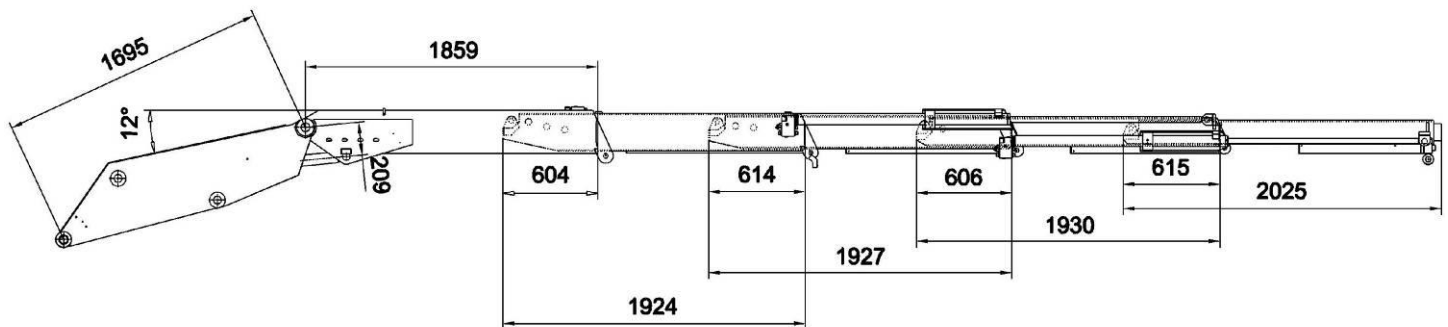
14-R / 60-2



14-R / 71-3



14-R / 84-4

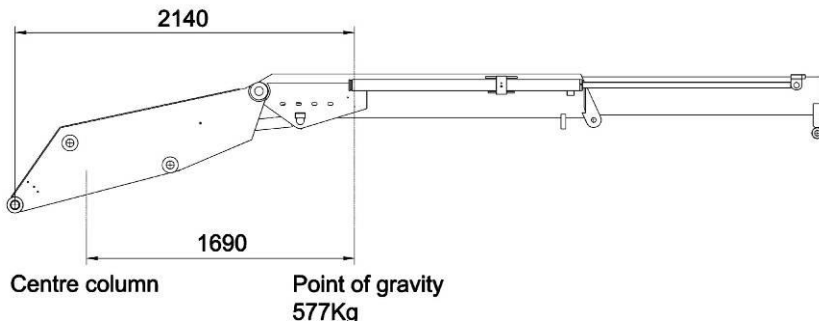


Kennis 14-R

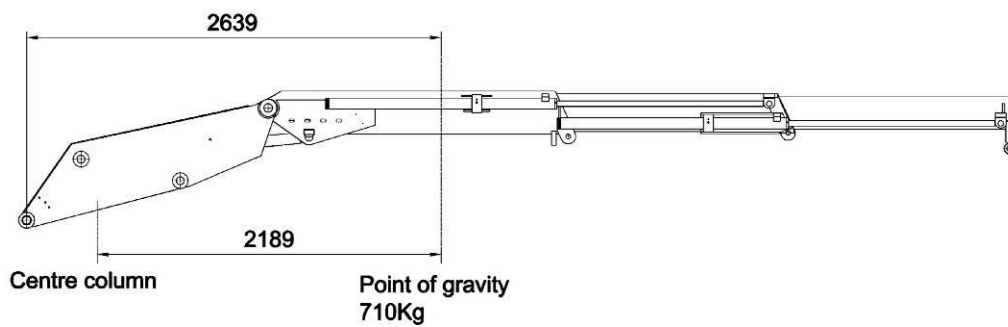
Technische Specificatie / Technical Specifications

Gewicht – zwaartepunten, Weight – center of gravity

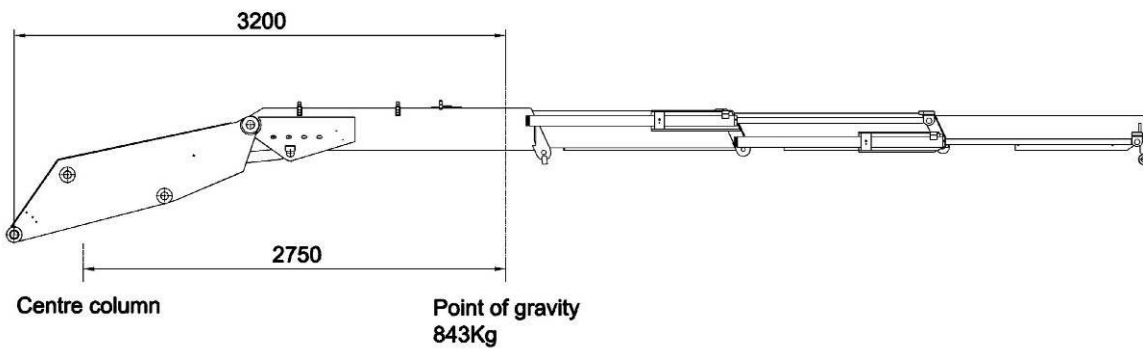
14-R / 50-1



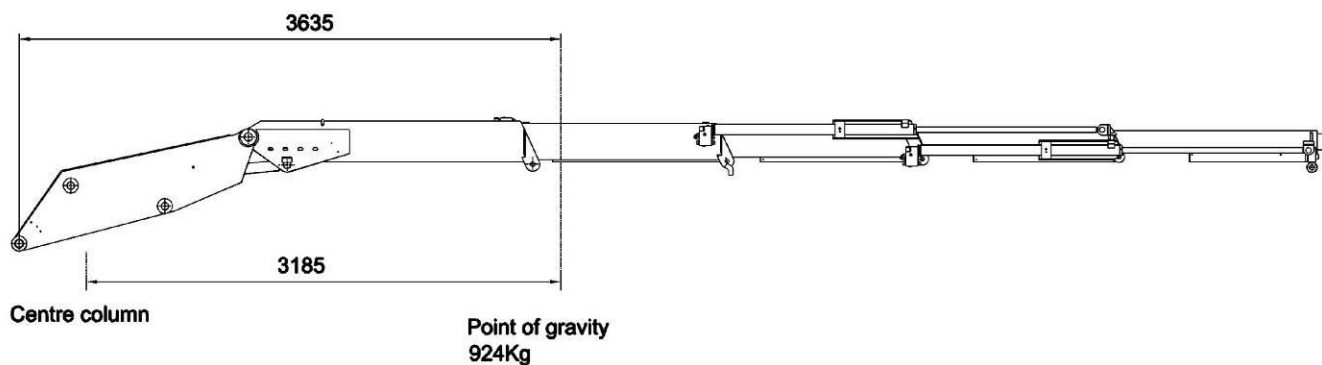
14-R / 60-2



14-R / 71-3



14-R / 84-4



Kennis 14-R

Technische Specificatie / Technical Specifications

Cilinders en pen afmetingen, Cylinders and pins dimensions.

Hef cilinder, Lifting cylinder KE007789

Cylinder bore	160
Cyl. Ext. diameter	190
Rod diameter	140-113
Pitch (open)	1317
Pitch (closed)	790
Stroke	527
Fittings	G1/2"
Artic. Pin Ø	50
Pin steel	42CrMo4V

Knik cilinder, Articulation Cylinder 50146021

Cylinder bore	140
Cyl. Ext. diameter	165
Rod diameter	70-0
Pitch (open)	1500
Pitch (closed)	950
Stroke	550
Fittings	G1/2"
Artic. Pin Ø	50
Pin steel	42CrMo4V

Boom 50-1; 60-2; 71-3

Uitschuif cilinder, Extension cylinders 1-2-3 50140541

Cylinder bore	55
Cyl. Ext. diameter	70
Rod diameter	35-0
Pitch (open)	1423
Pitch (closed)	2610
Stroke	1207
Fittings	G1/2"
Artic. Pin Ø	26
Pin steel	C45

Zwenk cilinder, Rotation cylinder 50162062

Cylinder bore	110
Cyl. Ext. diameter	125
Rod diameter	-
Pitch (open)	-
Pitch (closed)	-
Stroke (16-R)	865
Stroke (14-R)	769
Fittings	G1/2"
Artic. Pin Ø	-
Pin steel	-

Boom 84-4

Uitschuif cilinder 1, Extension cylinder 1 -50141541

Cylinder bore	60
Cyl. Ext. diameter	75
Rod diameter	40-0
Pitch (open)	2626
Pitch (closed)	1426
Stroke	1200
Fittings	G1/2"
Artic. Pin Ø	26
Pin steel	C45

Uitschuif cilinder 2, Extension cylinder 2 -50140540

Cylinder bore	55
Cyl. Ext. diameter	70
Rod diameter	35
Pitch (open)	2630
Pitch (closed)	1423
Stroke (14-R)	1207
Fittings	G1/2"
Artic. Pin Ø	26
Pin steel	C45

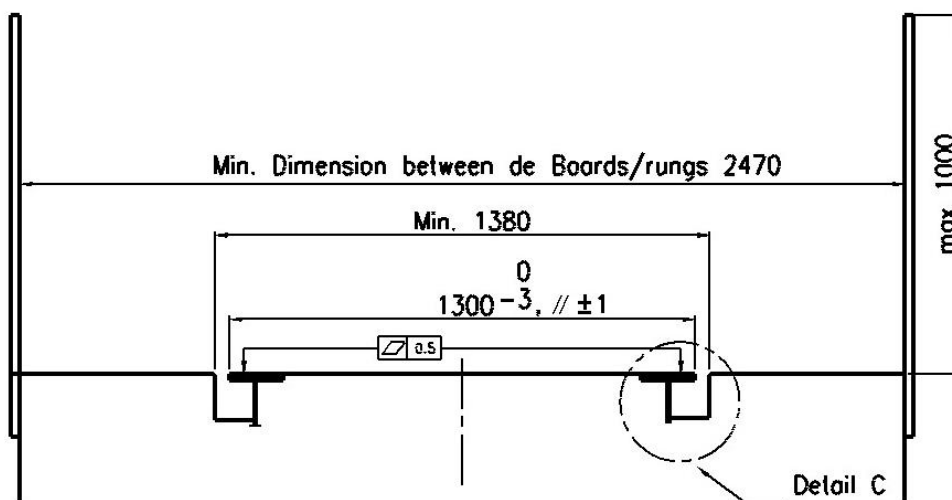
Uitschuifcilinder, Extension cylinder 3 & 4 50140541

Kennis 14-R

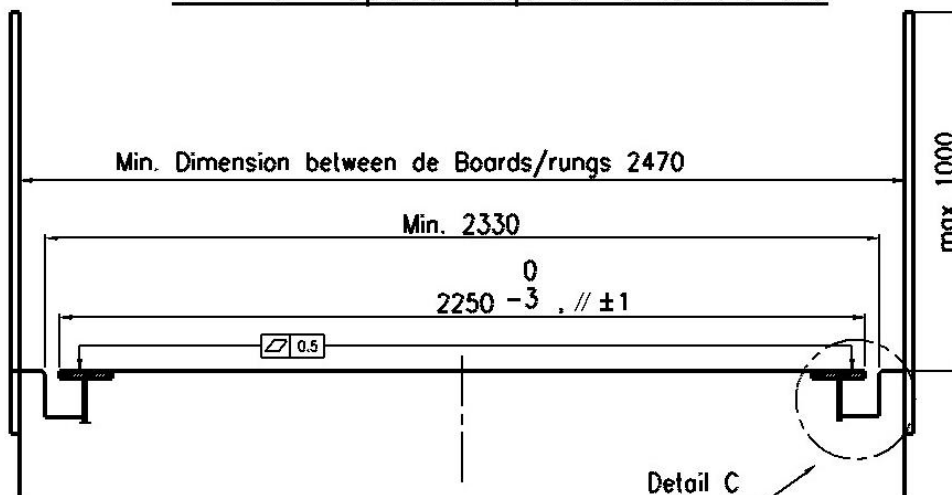
Technische Specificatie / Technical Specifications

Minimale eisen trailer, Minimum requirements trailer,

Deze informatie niet gebruiken voor sterkteberekeningen
This information is not suitable for strength calculations



Minimum space requirements trailers



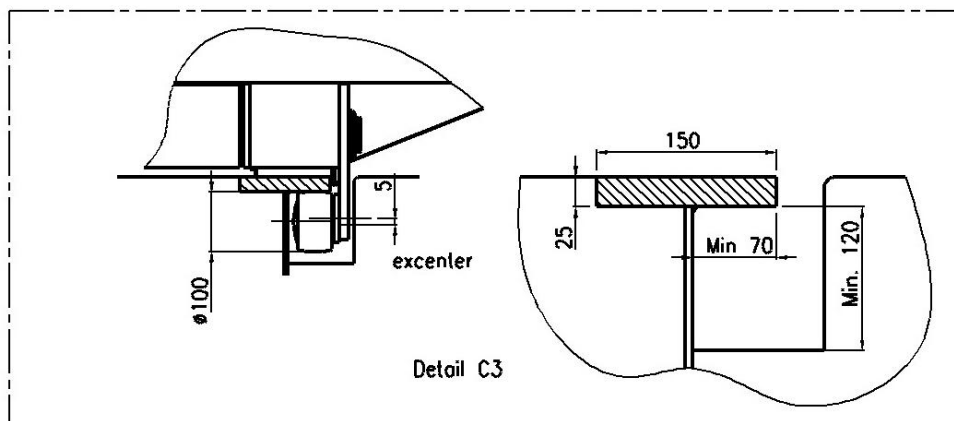
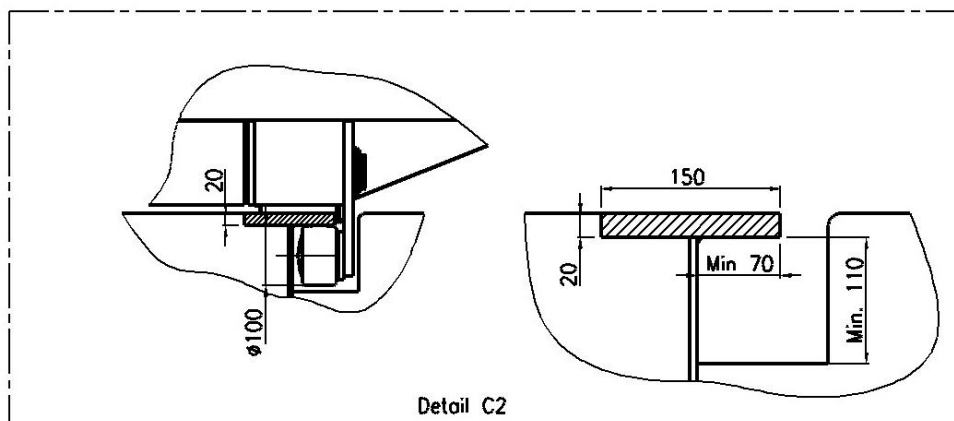
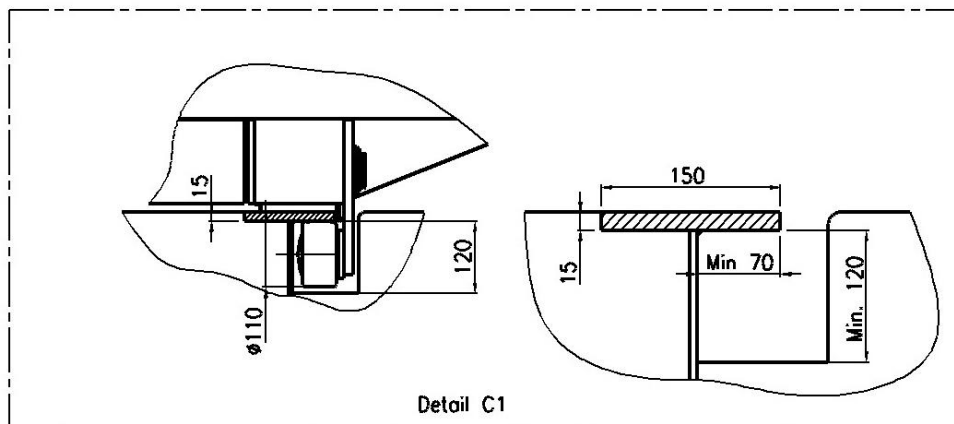
Minimale eisen trailer

Kennis 14-R

Technische Specificatie / Technical Specifications

Minimale eisen trailer, Minimum requirements trailer,

Deze informatie niet gebruiken voor sterkteberekeningen
This information is not suitable for strength calculations



Kennis 14-R

Technische Specificatie / Technical Specifications

Standaard bedieningsvolgordes, standard control orders,

STANDARD CONTROL ORDER LEVERS.

- A: Main boom down
- B: Main boom up
- C: Outer boom down
- D: Outer boom up
- E: Crane slewing right
- F: Crane slewing left
- G: Driving forward
- H: Driving backwards
- I: Clamp open
- J: Clamp close

Norm: 10-08-01 eng \ rev-

STANDARD CONTROL ORDER COMFORT.

- A: Main boom down
- B: Main boom up
- C: Outer boom down
- D: Outer boom up
- E: Crane slewing right
- F: Crane slewing left
- G: Driving forward
- H: Driving backwards
- I: Clamp open
- J: Clamp close

Norm: 10-07-01 eng \ rev-

Kennis 14-R

Technische Specificatie / Technical Specifications

Standaard bedieningsvolgordes, standard control orders,

STANDARD CONTROL ORDER JOYSTICKS.

- A: Outer boom down
- B: Outer boom up
- C: Crane slewing left
- D: Crane slewing right
- E: Main boom down
- F: Main boom up
- G: Rotator slewing left
- H: Rotator slewing right

Norm: 10-06-01 eng\ rev.-

STANDARD CONTROL ORDER JOYSTICKS.

Because of safety considerations the joysticks are so connected, that if button 1 in the left joystick not is restrained, the clamp switch 2 en 3 in the right joystick is inoperative.

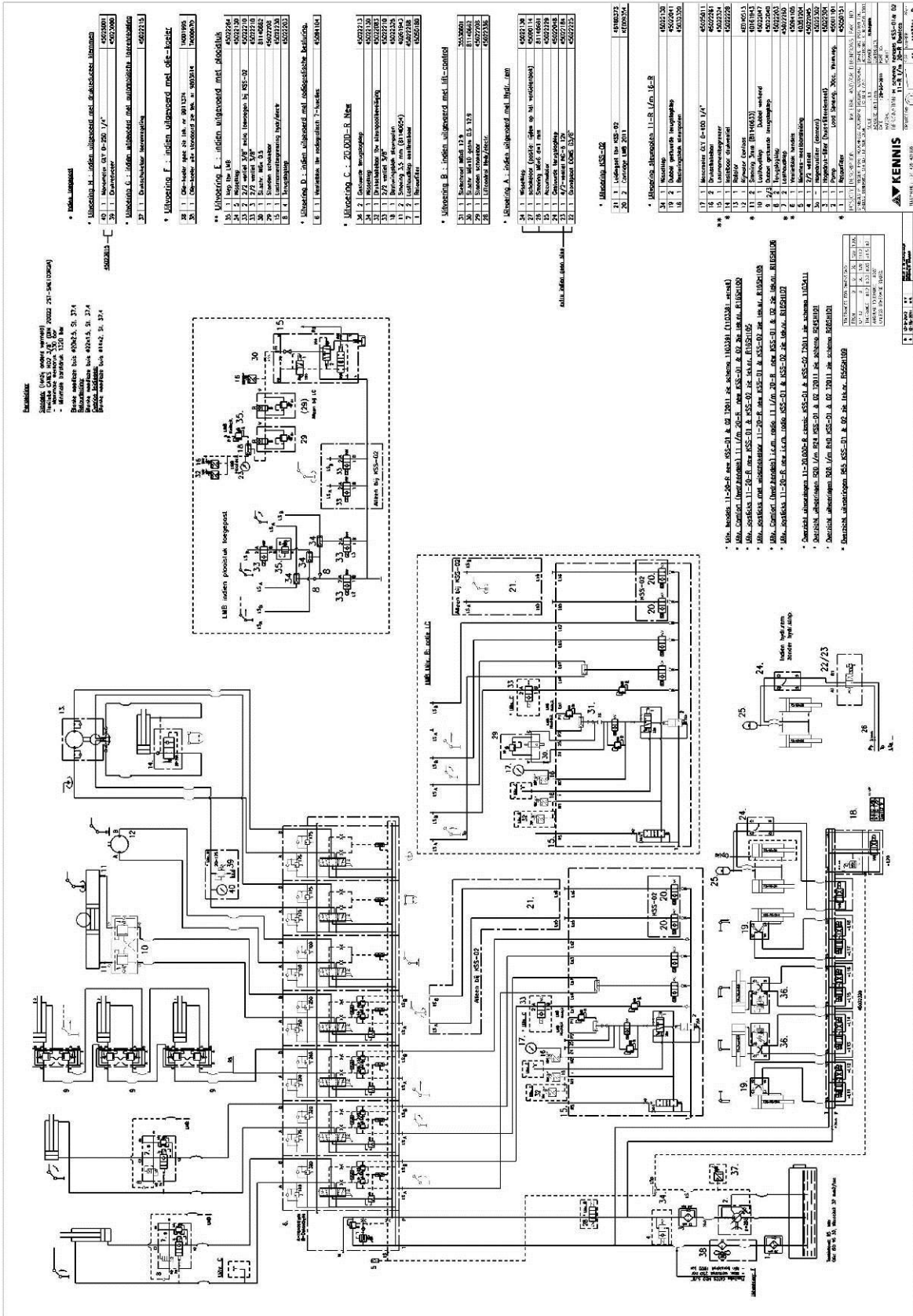
- A: Main boom down
- B: Main boom up
- C: Rotator slewing right
- D: Rotator slewing left
- E: Outer boom up
- F: Outer boom down
- G: Crane slewing right
- H: Crane slewing left

Norm: 10-05-01 eng\ rev.-

Kennis 14-R

Technische Specificatie / Technical Specifications

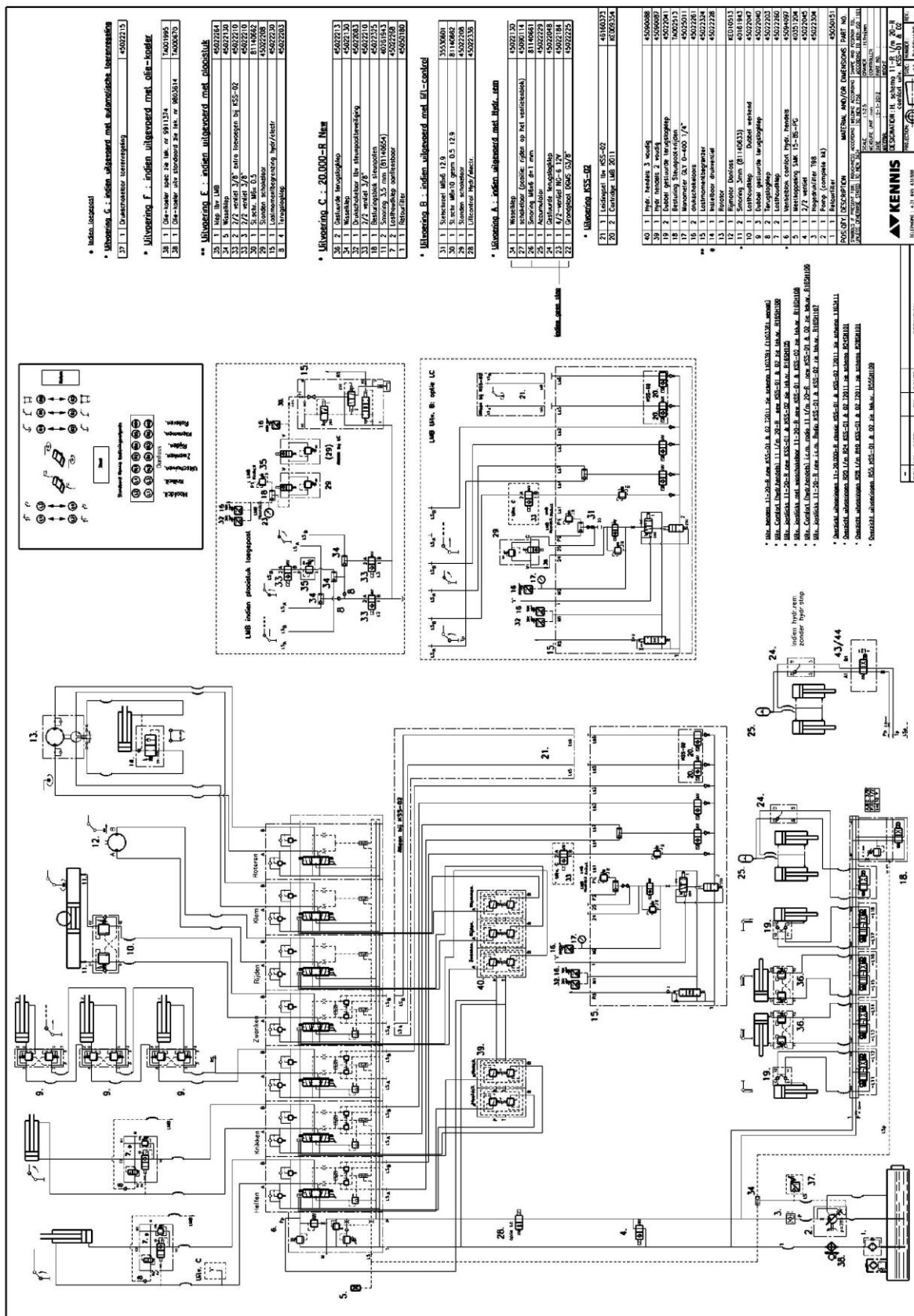
Hydraulisch schema, Hydraulic scheme 1103391: KSS-01 &KSS-02 Hendel bediening, levercontrol



Kennis 14-R

Technische Specificatie / Technical Specifications

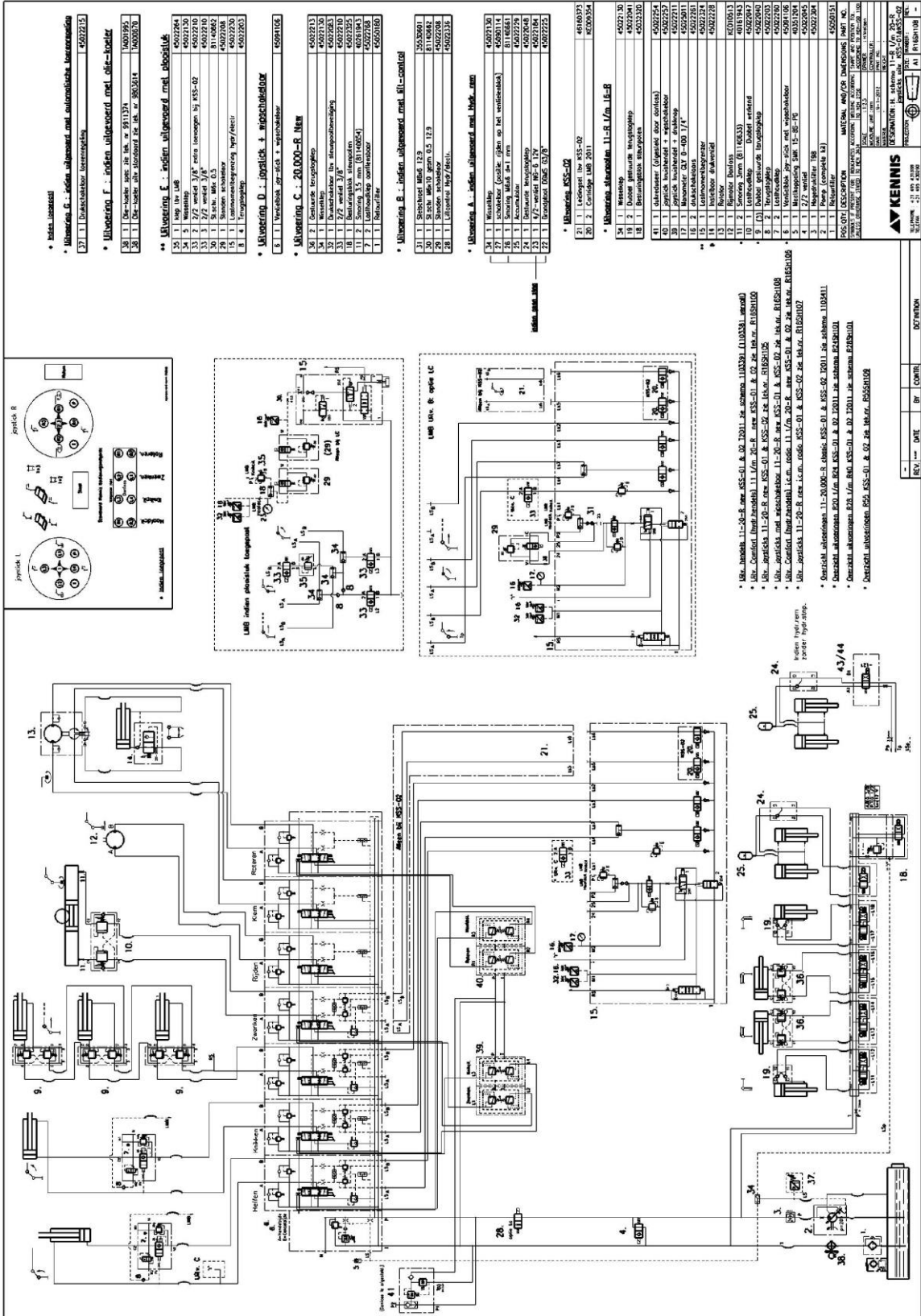
Hydraulisch schema, hydraulic scheme R16SH100: KSS-01 & KSS-02
 comfort bediening, Comfort control



Kennis 14-R

Technische Specificatie / Technical Specifications

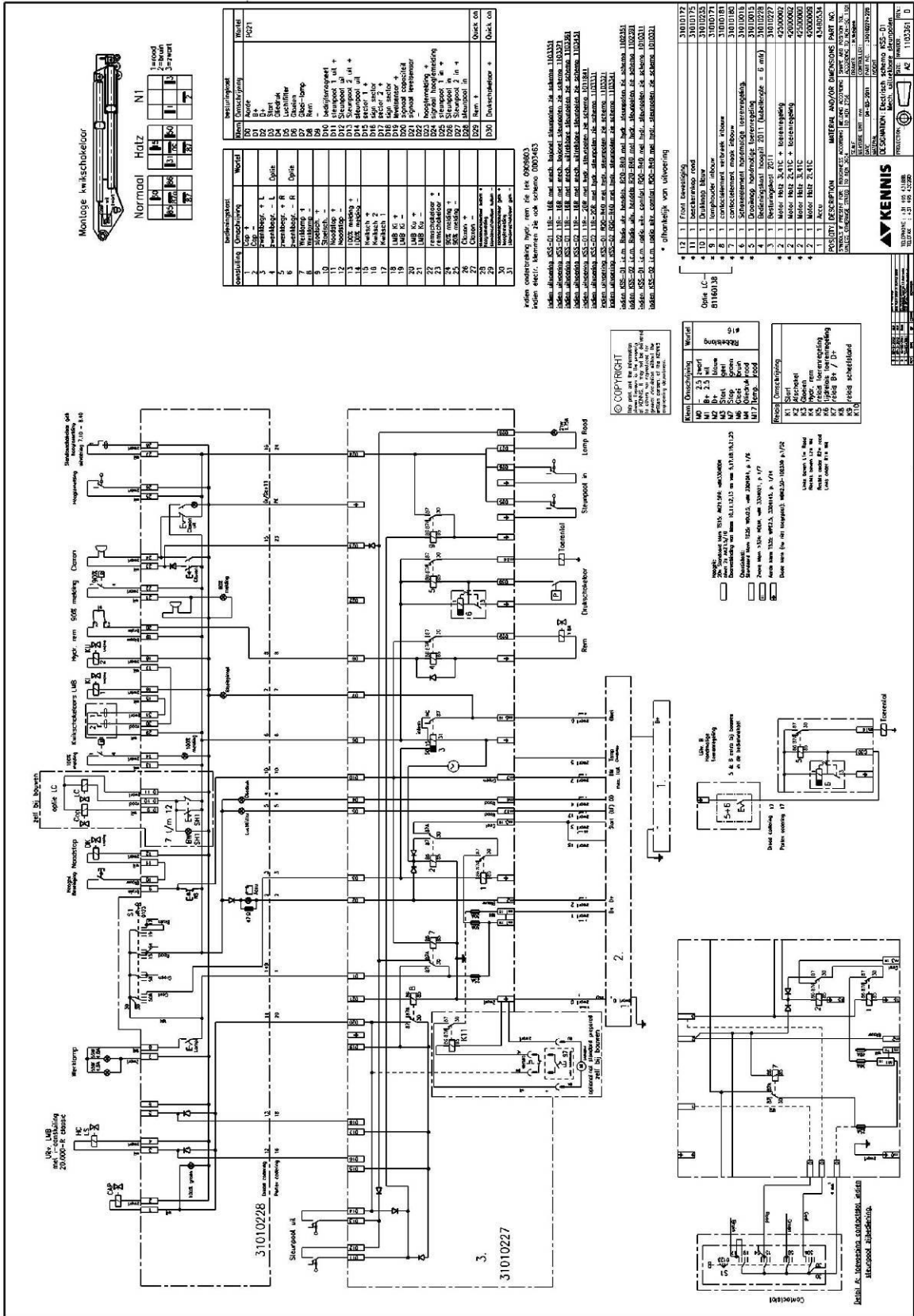
Hydraulisch schema, Hydraulic scheme R16SH108: KSS-01 &KSS-02
Joystick bediening met klemfunctie elektrisch. Joystick control with clamp function electrical.



Kennis 14-R

Technische Specificatie / Technical Specifications

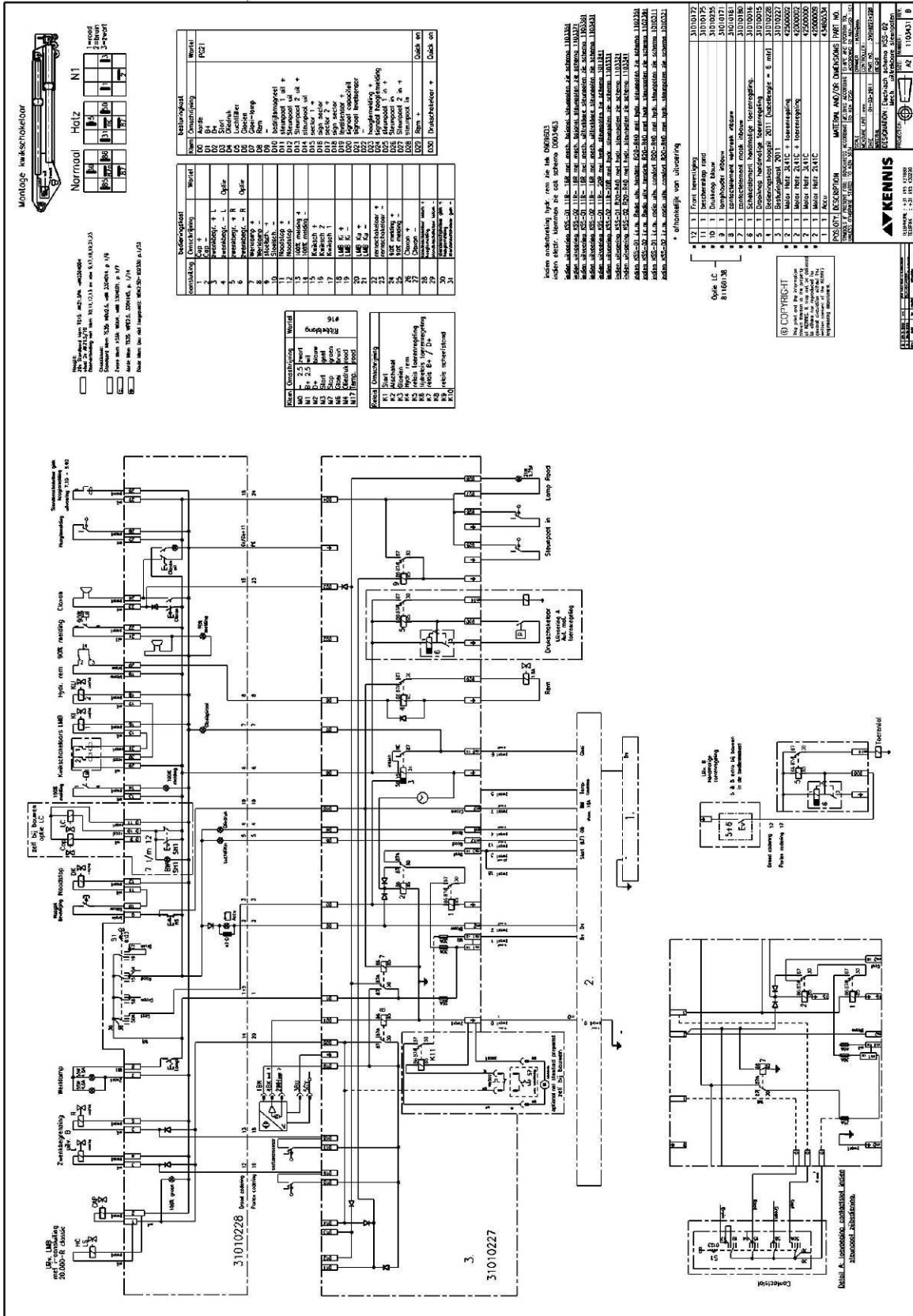
Electrisch schema, Electrical scheme 1103361: KSS-01
Mechanisch steunpoten, Mechanical stabilizer.



Kennis 14-R

Technische Specificatie / Technical Specifications

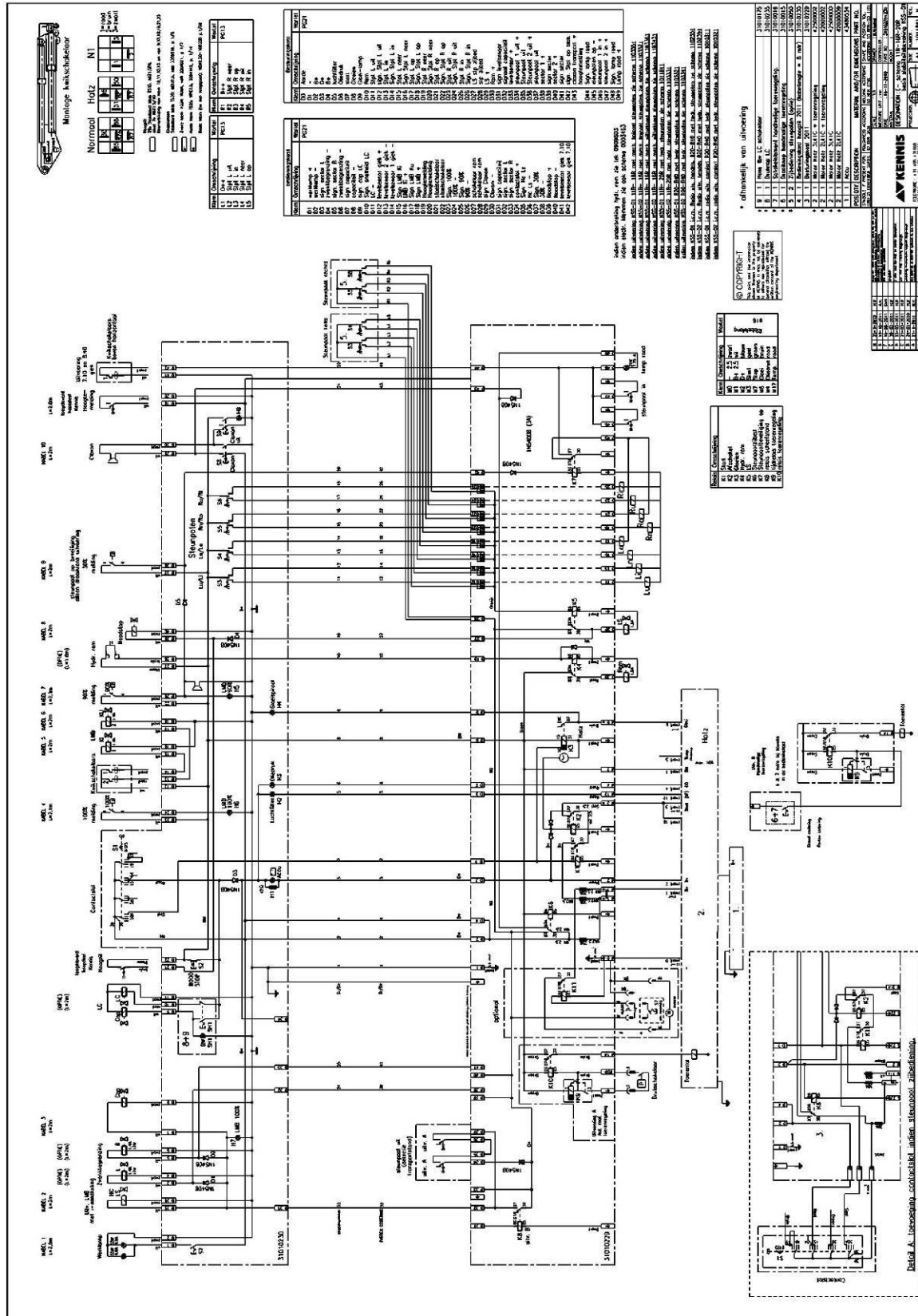
Electrisch schema, Electrical scheme 1103431: KSS-02
 Mechanische steunpoten, mechanical stabilizer



Kennis 14-R

Technische Specificatie / Technical Specifications

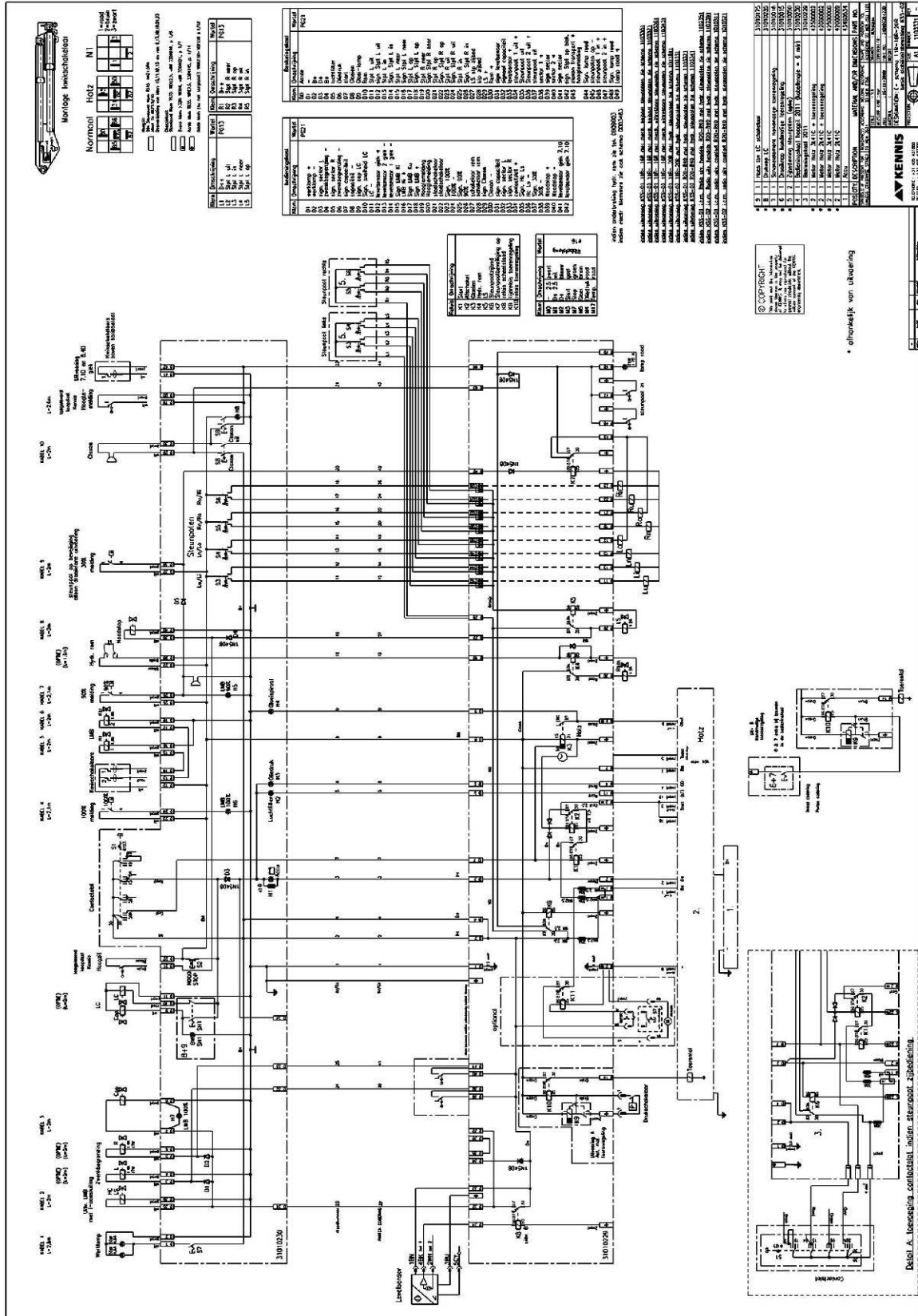
Electrisch schema, Electrical scheme 1011841: KSS-01
Hydraulische steunpoten, hydraulic stabilizer



Kennis 14-R

Technische Specificatie / Technical Specifications

Electrisch schema, Electrical scheme 1103331: KSS-02.
Hydraulische steunpoten, hydraulic stabilizer



Kennis 14-R

Technische Specificatie / Technical Specifications

Opmerkingen, remarks

Maximale hefcapaciteit met de hoofdgiek onder een hoek van 12°.
Maximum lifting capacity with main boom up to 12°.

Hijsgereedschappen maken deel uit van de last.
Lifting equipment are part of the load.

De truck, trekker en oplegger stabiliteit kunnen de kraan capaciteit beïnvloeden.
Truck, tractor and trailer stability may command derating the crane capacity.

De plaatjes en afmetingen in dit document zijn een indicatie en kunnen afwijken van de werkelijkheid.
The pictures en measurements in this document are a indication and therefore can be different from the reality.

Hyva Holding B.V. behoudt zich het recht voor zonder voorafgaande aankondiging de in deze technische instructie vermelde gegevens te wijzigen.
Alle rechten voorbehouden. Nadruk, ook in gedeelten, verboden.

Information in this document is subject to change without notice and does not represent a commitment on the part of Hyva Holding B.V.
All rights reserved. Unauthorised duplication, even partially, is forbidden.

