

# KMC 500S-6

# KTEG



## Engine

Engine model: Isuzu AQ-6UZ1X  
Net Power - ISO14396:  
270 kW kW (362 hp)

## Weight

Operating weight including  
demolition front:  
approximately 68.000 kg

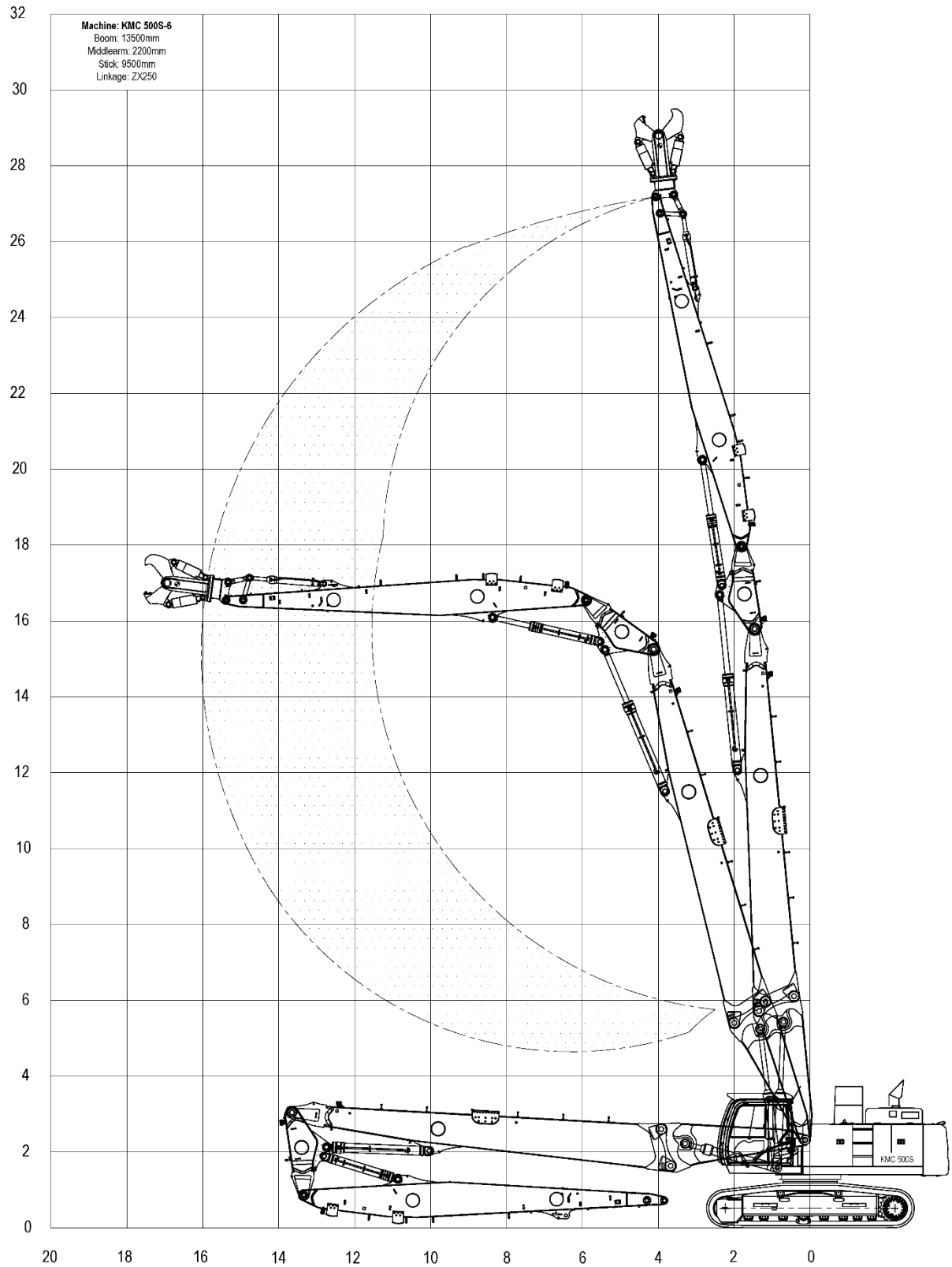
## Working height

Maximum pin height:  
27 meters  
Maximum safe working height:  
25 meters

# Demolition front

# KTEG

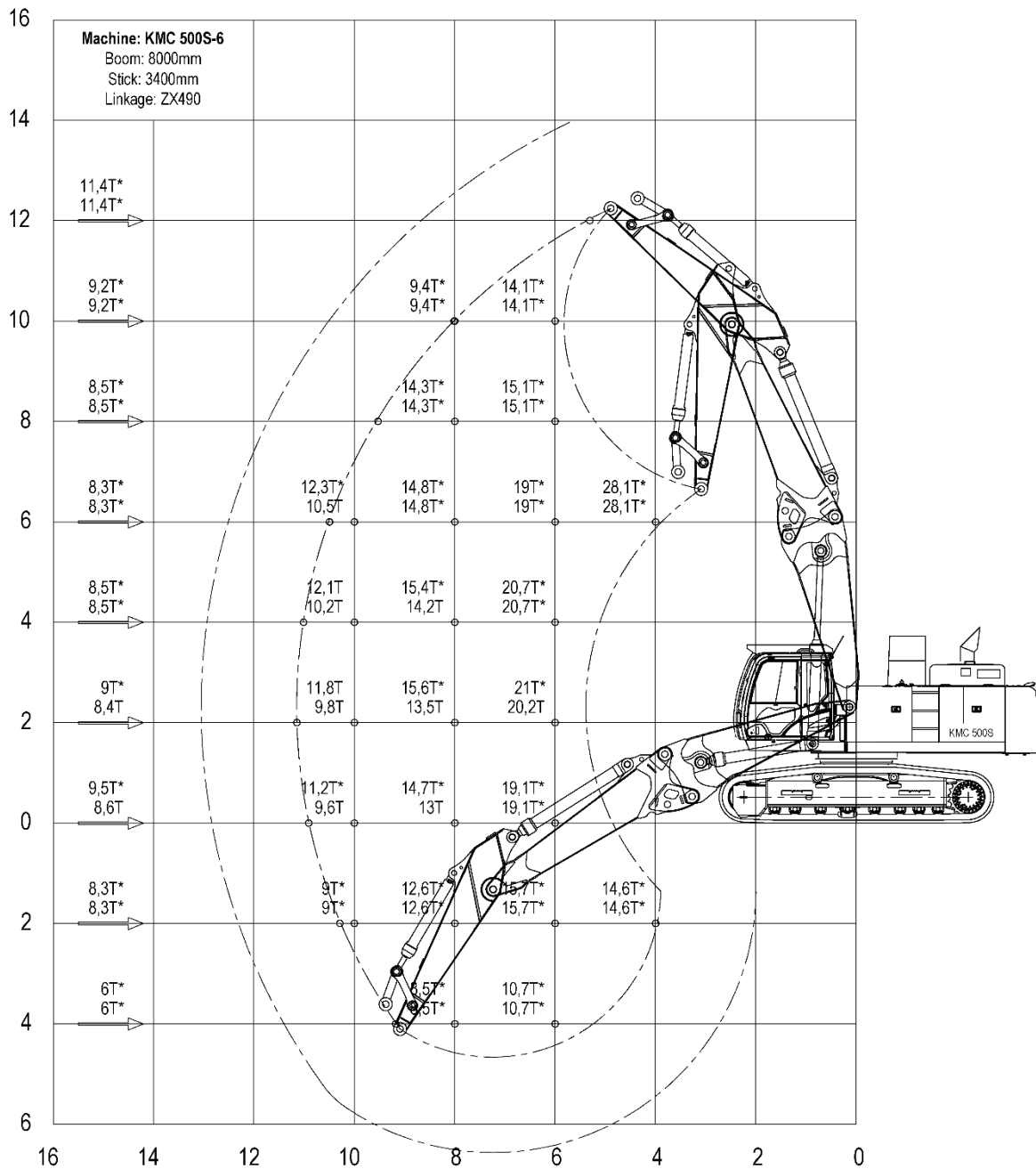
Pin height 27 meters



Specifications are subject to change without notice.

# Straight Boom

# KTEG



The upper number indicates the maximum load over the front, the lower number over the side.

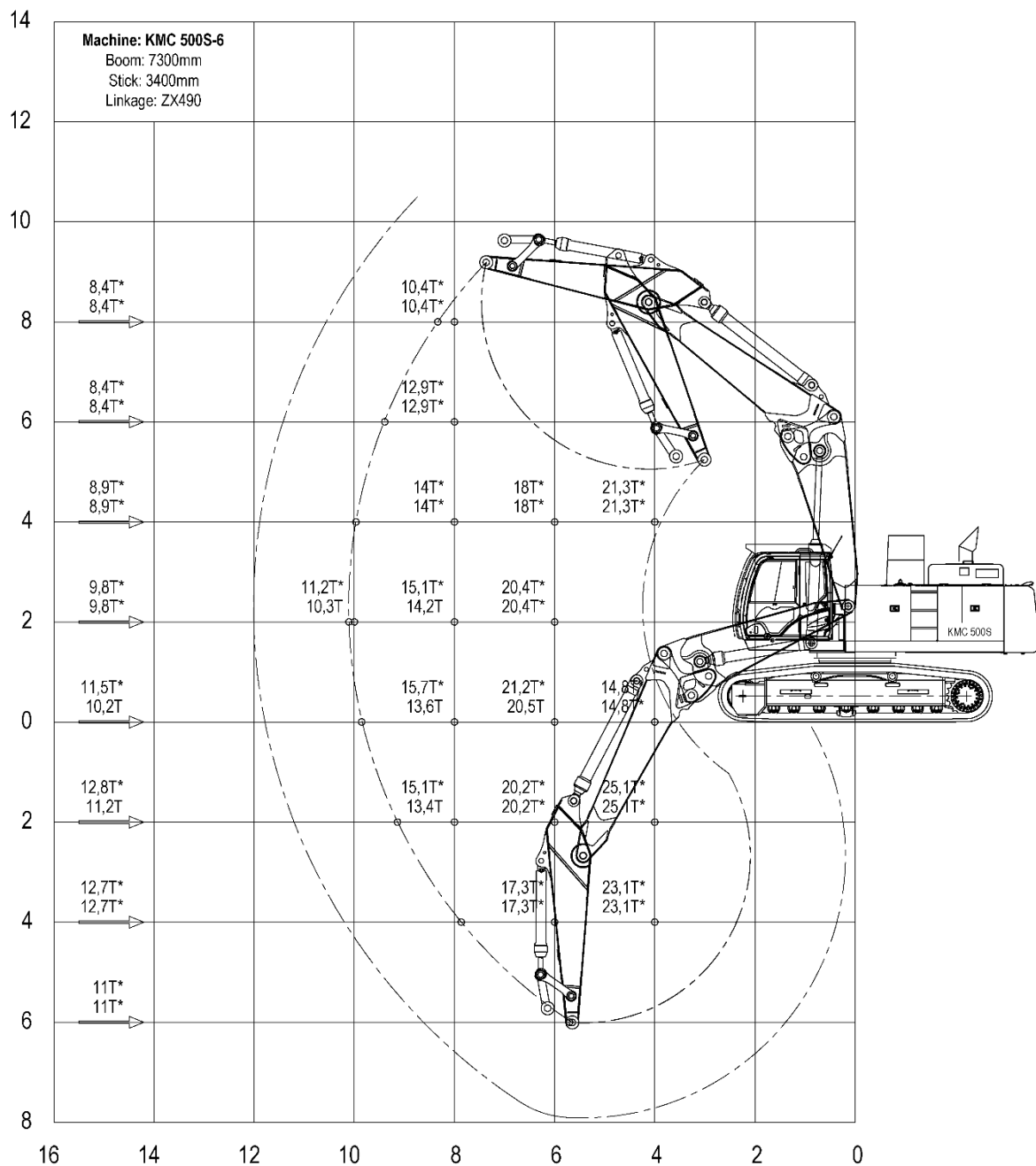
The numbers with a \* indicates 87% of the hydraulic capacity, the remaining numbers 75% of the tipping load.

The left column shows the load at max. reach of the machine.

The above loads are in compliance with ISO 10567 hydraulic excavator lift capacity standard. Weight of all lifting accessories must be deducted from the above lifting capacities. The use of a work tool attachment point to handle/lift objects, could affect the machine lift performance. Lifting capacities are based on the machine standing on a firm, uniform supporting surface. Specifications are subject to change without notice.

# Bent Boom

# KTEG



The upper number indicates the maximum load over the front, the lower number over the side.

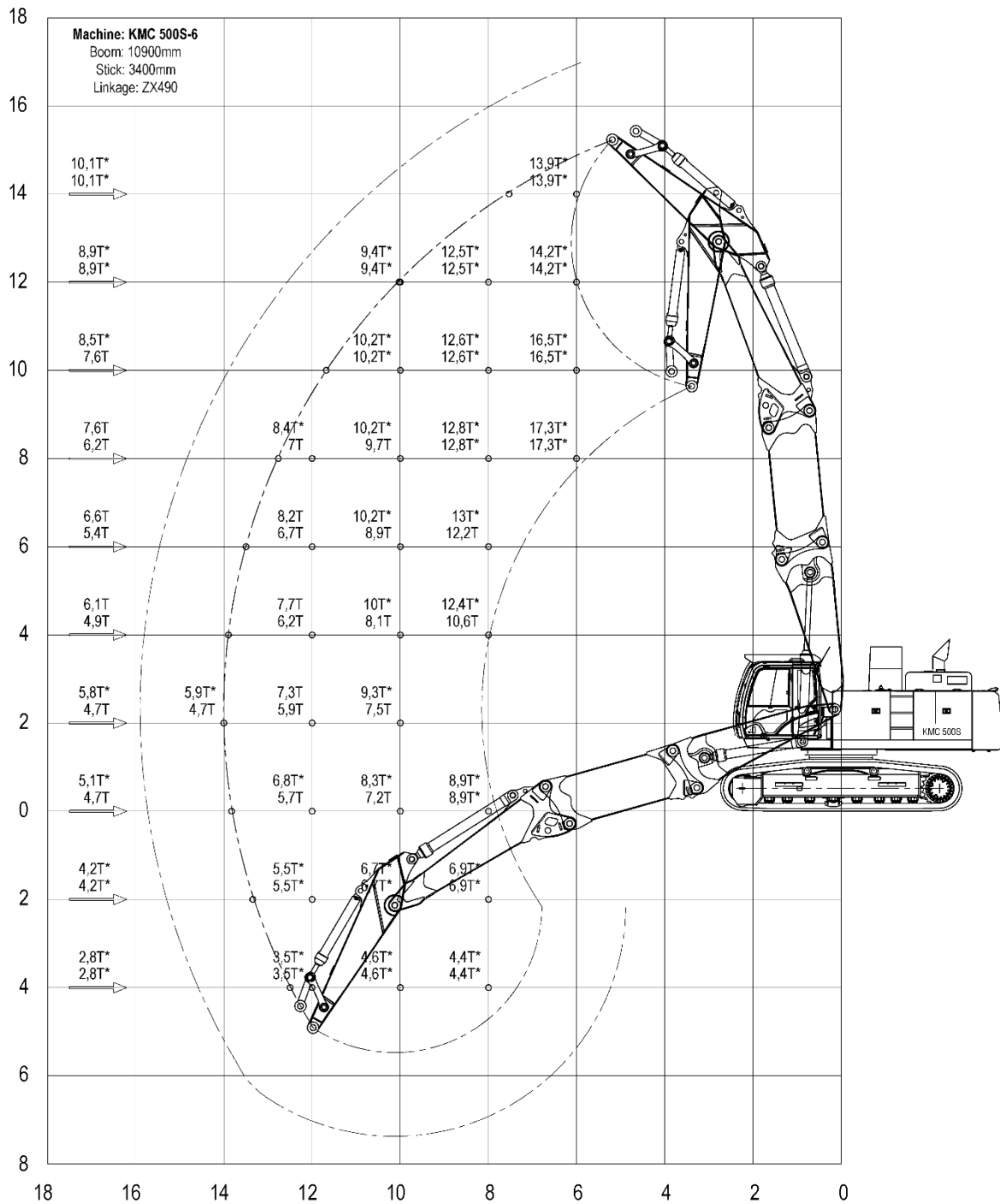
The numbers with a \* indicates 87% of the hydraulic capacity, the remaining numbers 75% of the tipping load.

The left column shows the load at max. reach of the machine.

The above loads are in compliance with ISO 10567 hydraulic excavator lift capacity standard. Weight of all lifting accessories must be deducted from the above lifting capacities. The use of a work tool attachment point to handle/lift objects, could affect the machine lift performance. Lifting capacities are based on the machine standing on a firm, uniform supporting surface. Specifications are subject to change without notice.

# Straight Boom + Ext.

# KTEG



The upper number indicates the maximum load over the front, the lower number over the side.

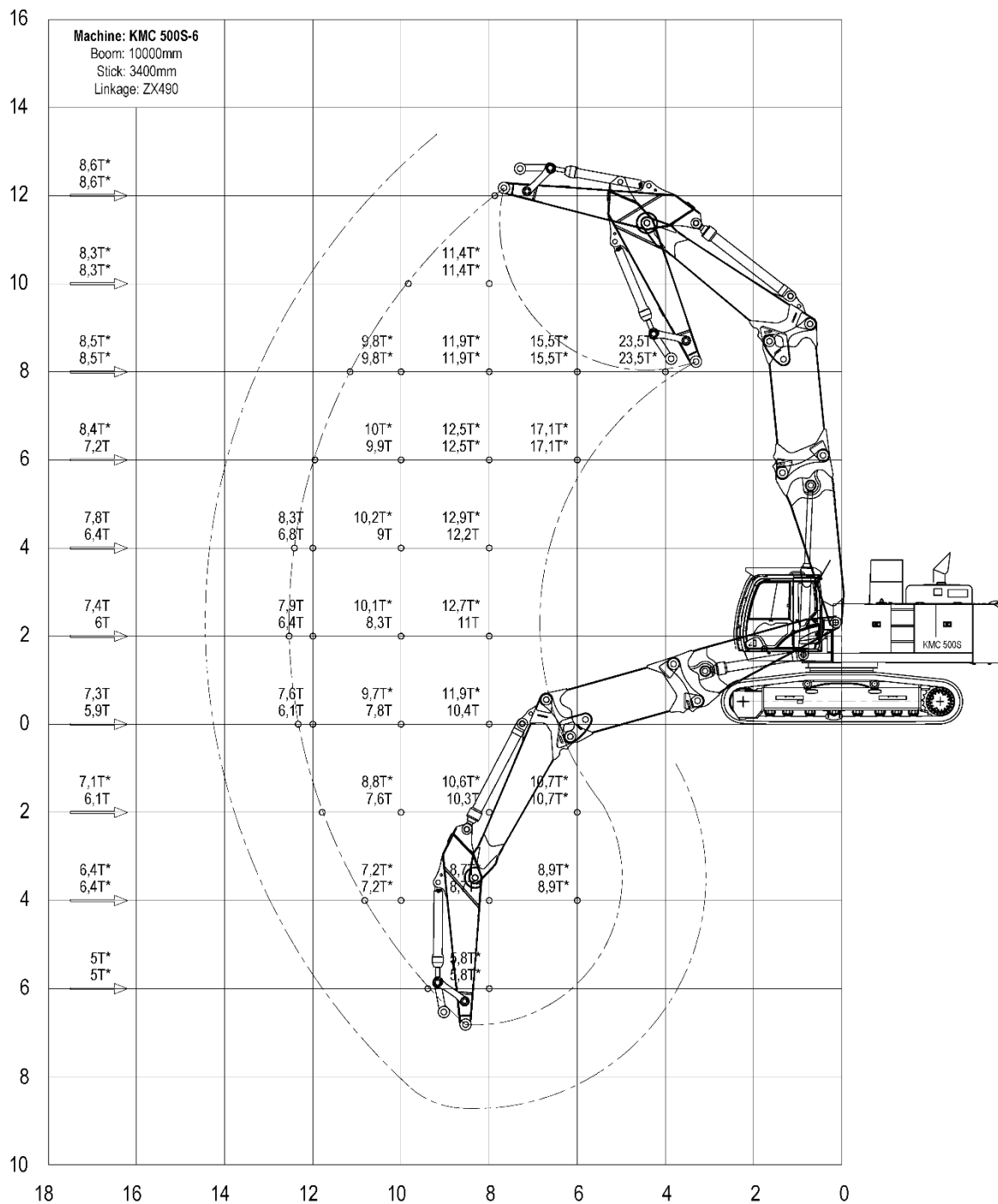
The numbers with a \* indicates 87% of the hydraulic capacity, the remaining numbers 75% of the tipping load.

The left column shows the load at max. reach of the machine.

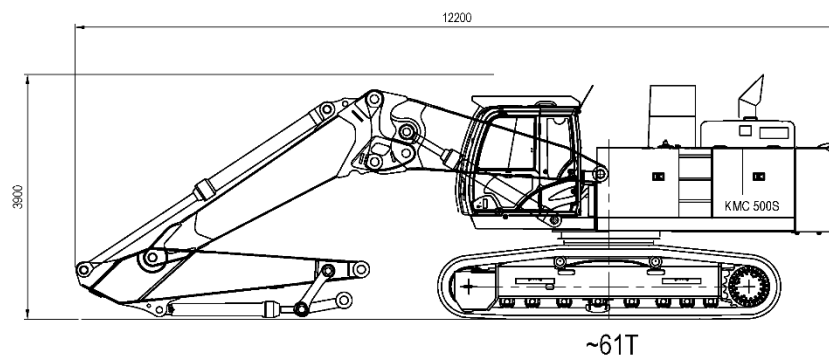
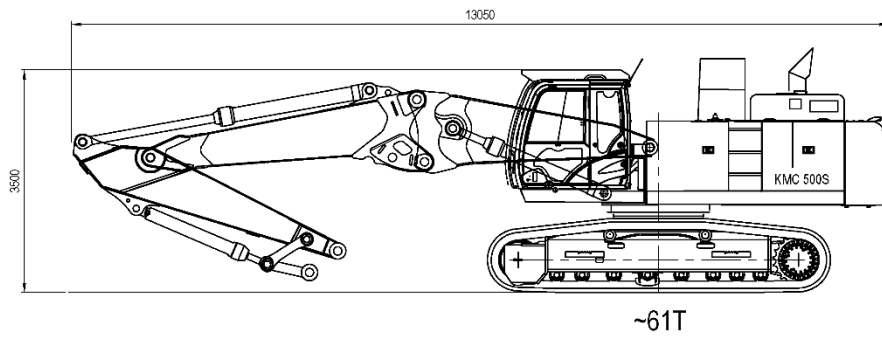
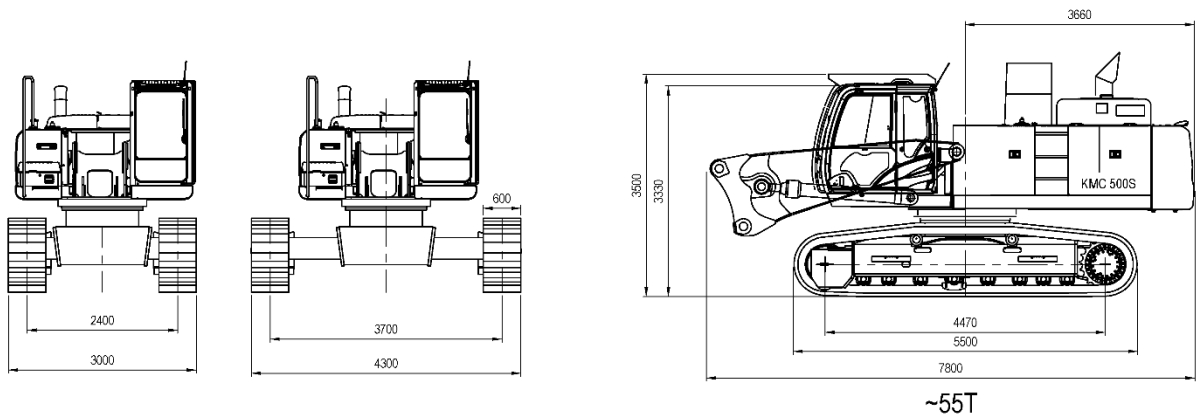
The above loads are in compliance with ISO 10567 hydraulic excavator lift capacity standard. Weight of all lifting accessories must be deducted from the above lifting capacities. The use of a work tool attachment point to handle/lift objects, could affect the machine lift performance. Lifting capacities are based on the machine standing on a firm, uniform supporting surface. Specifications are subject to change without notice.

# Bent Boom + Ext.

# KTEG

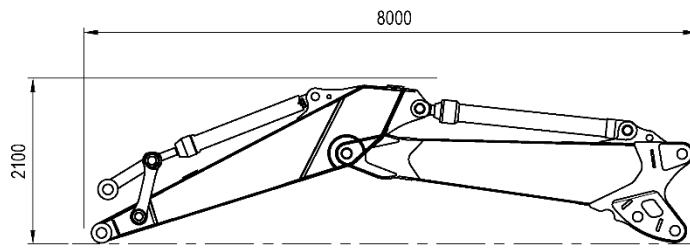


The upper number indicates the maximum load over the front, the lower number over the side.  
The numbers with a \* indicates 87% of the hydraulic capacity, the remaining numbers 75% of the tipping load.  
The left column shows the load at max. reach of the machine.  
The above loads are in compliance with ISO 10567 hydraulic excavator lift capacity standard. Weight of all lifting accessories must be deducted from the above lifting capacities. The use of a work tool attachment point to handle/lift objects, could affect the machine lift performance. Lifting capacities are based on the machine standing on a firm, uniform supporting surface. Specifications are subject to change without notice.

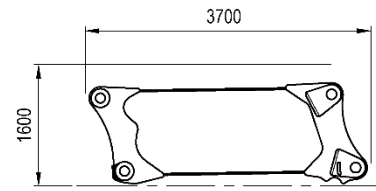


# Transport

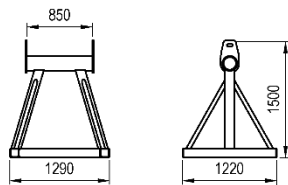
# KTEG



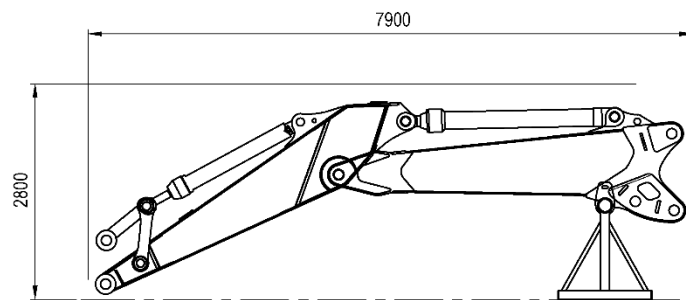
6,5T  
Short boom



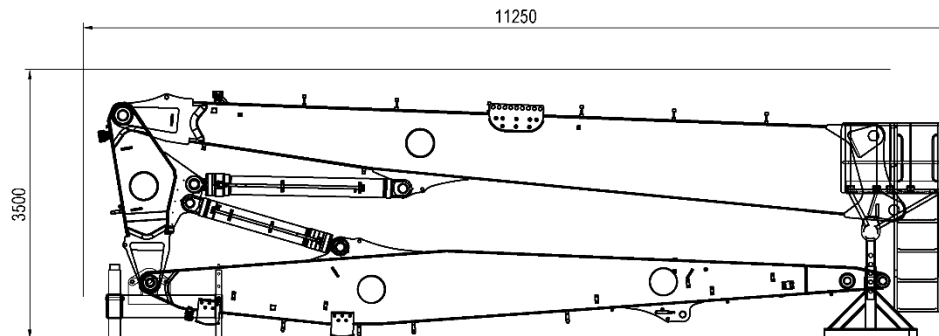
3T  
Extension



Total: ~300kg



7T  
Short boom



12T  
27m height

Specifications are subject to change without notice.

KTEG GmbH  
Baindter Strasse 29  
88255 Baienfurt / Germany

Tel.: +49 751 5004-0

KMC500S\_V200408