

KMC 540S-6

KTEG



Engine

Engine model: Isuzu AQ-6UZ1X
Net Power - ISO14396:
270 kW kW (362 hp)

Weight

Operating weight including
demolition front:
approximately 71.000 kg

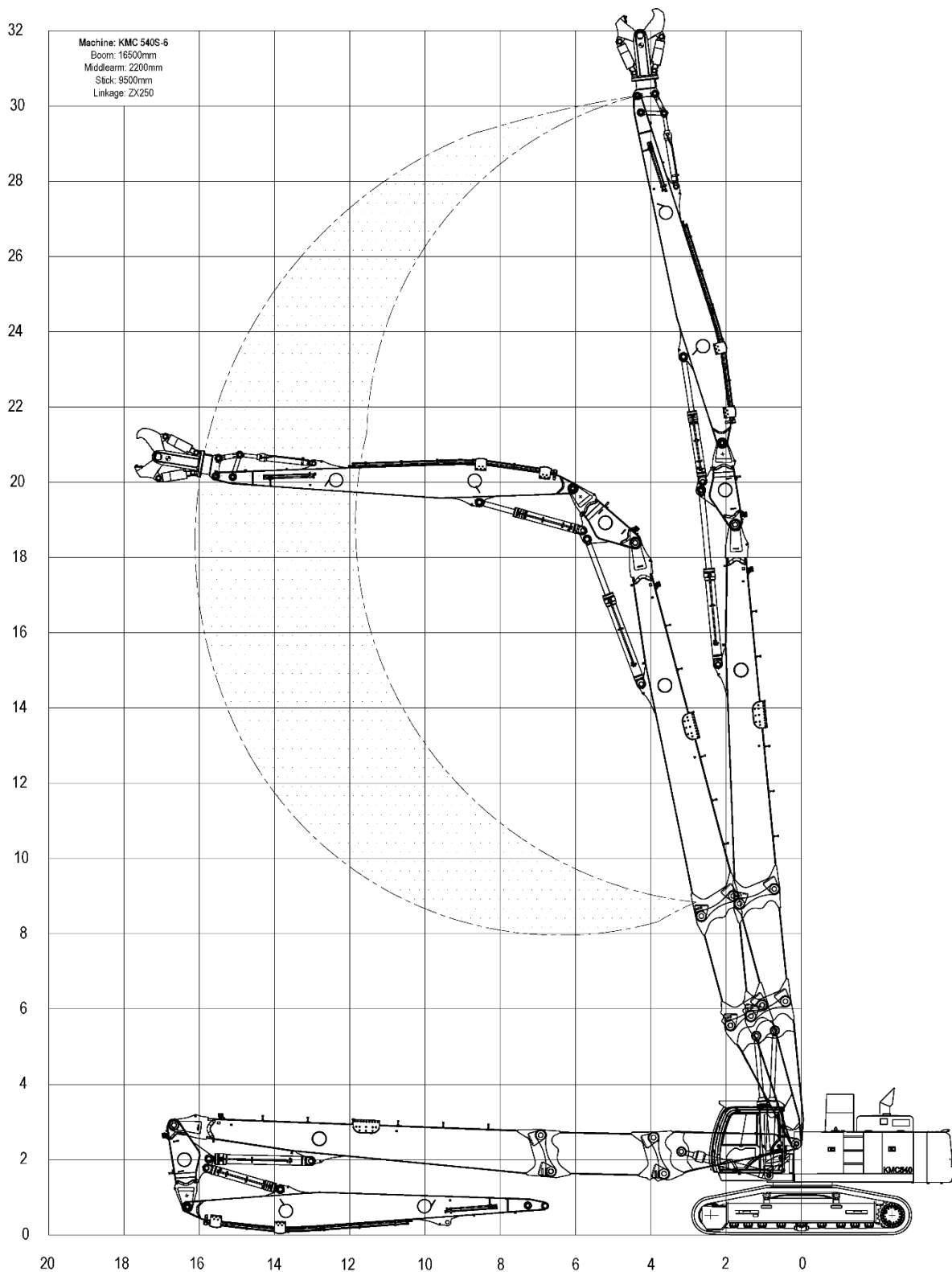
Working height

Maximum pin height:
30 meters
Maximum safe working height:
28 meters

Demolition front

Pin height 30 meters

KTEG

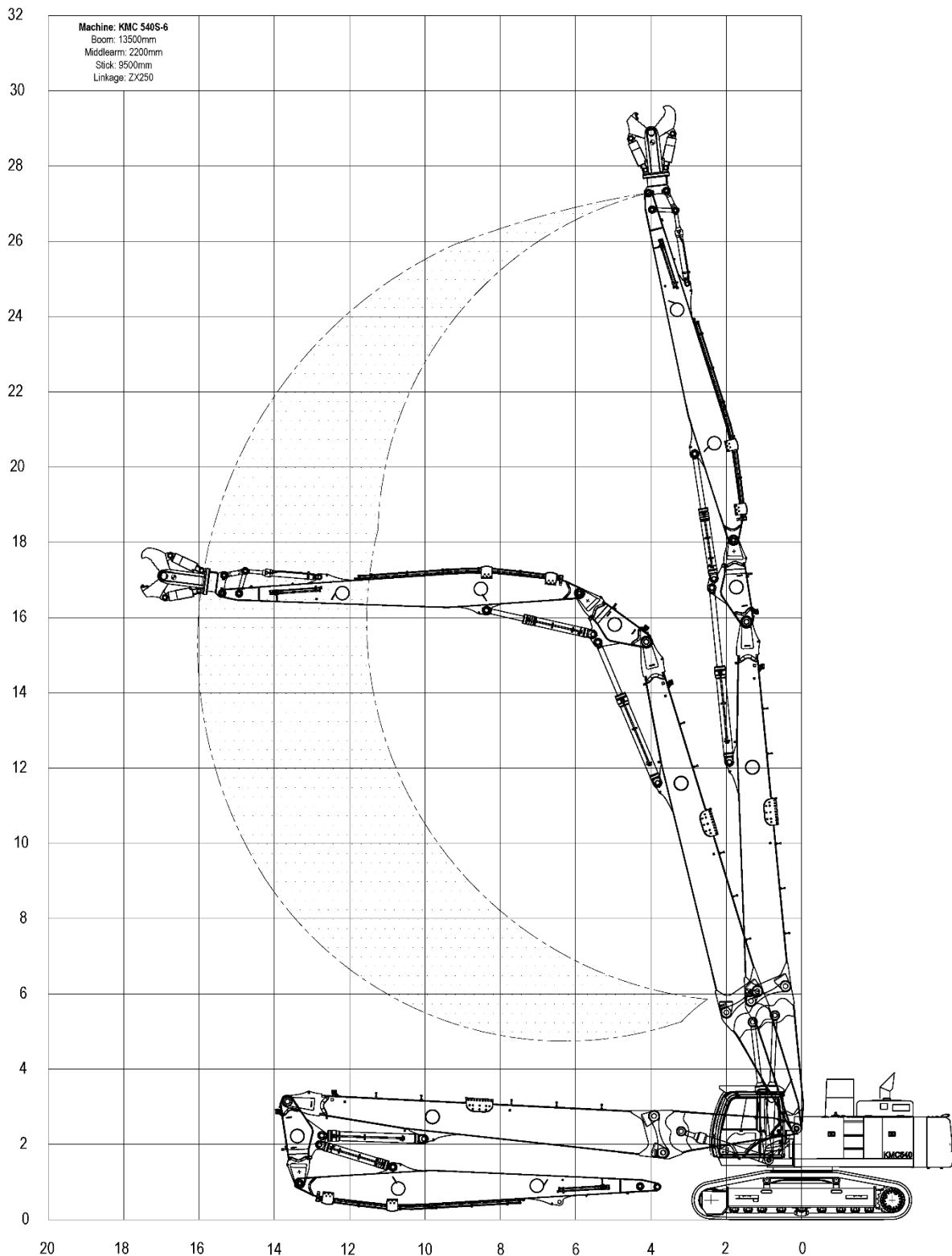


Specifications are subject to change without notice.

Demolition front

KTEG

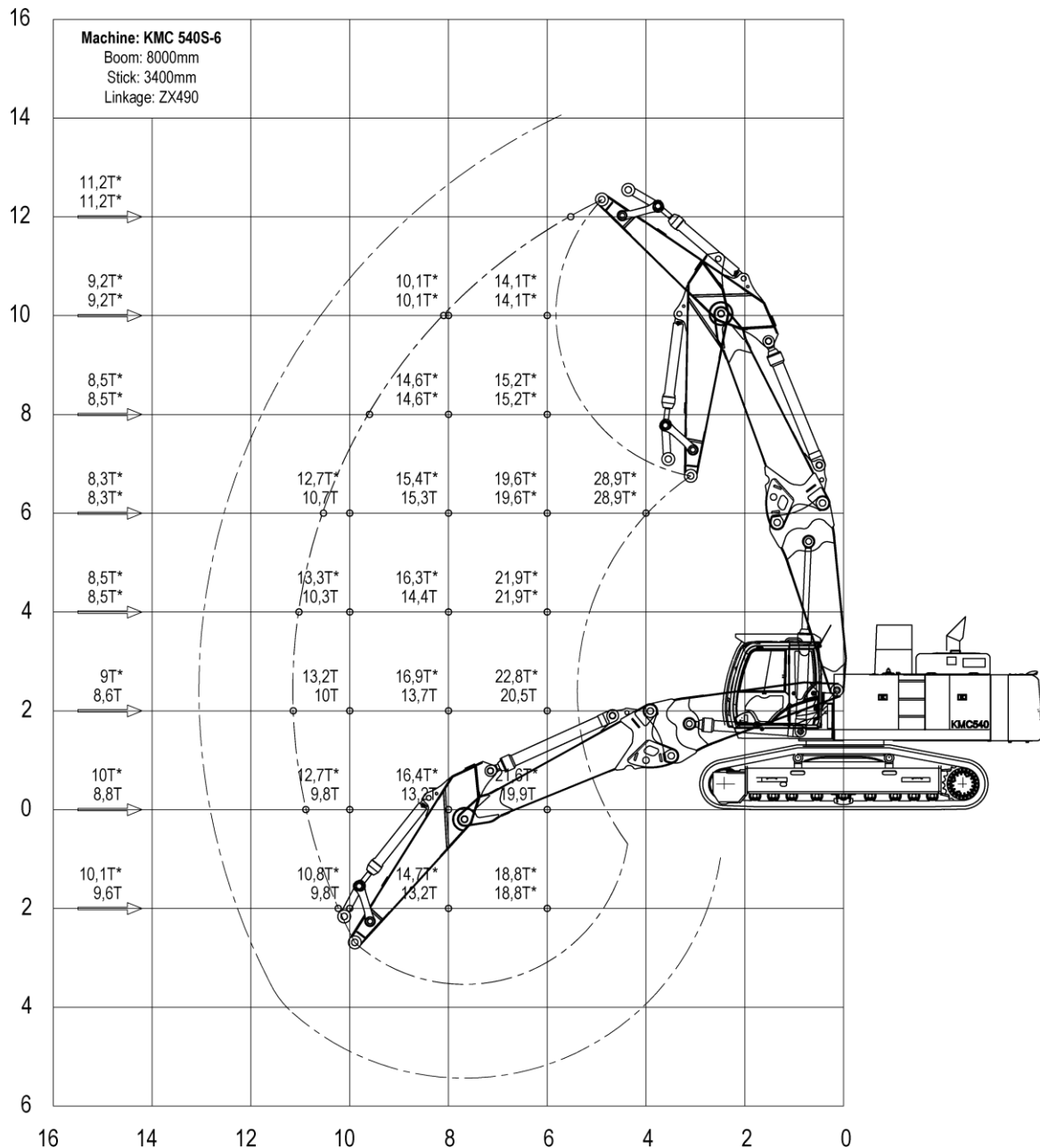
Pin height 27 meters



Specifications are subject to change without notice.

Straight Boom

KTEG



The upper number indicates the maximum load over the front, the lower number over the side.

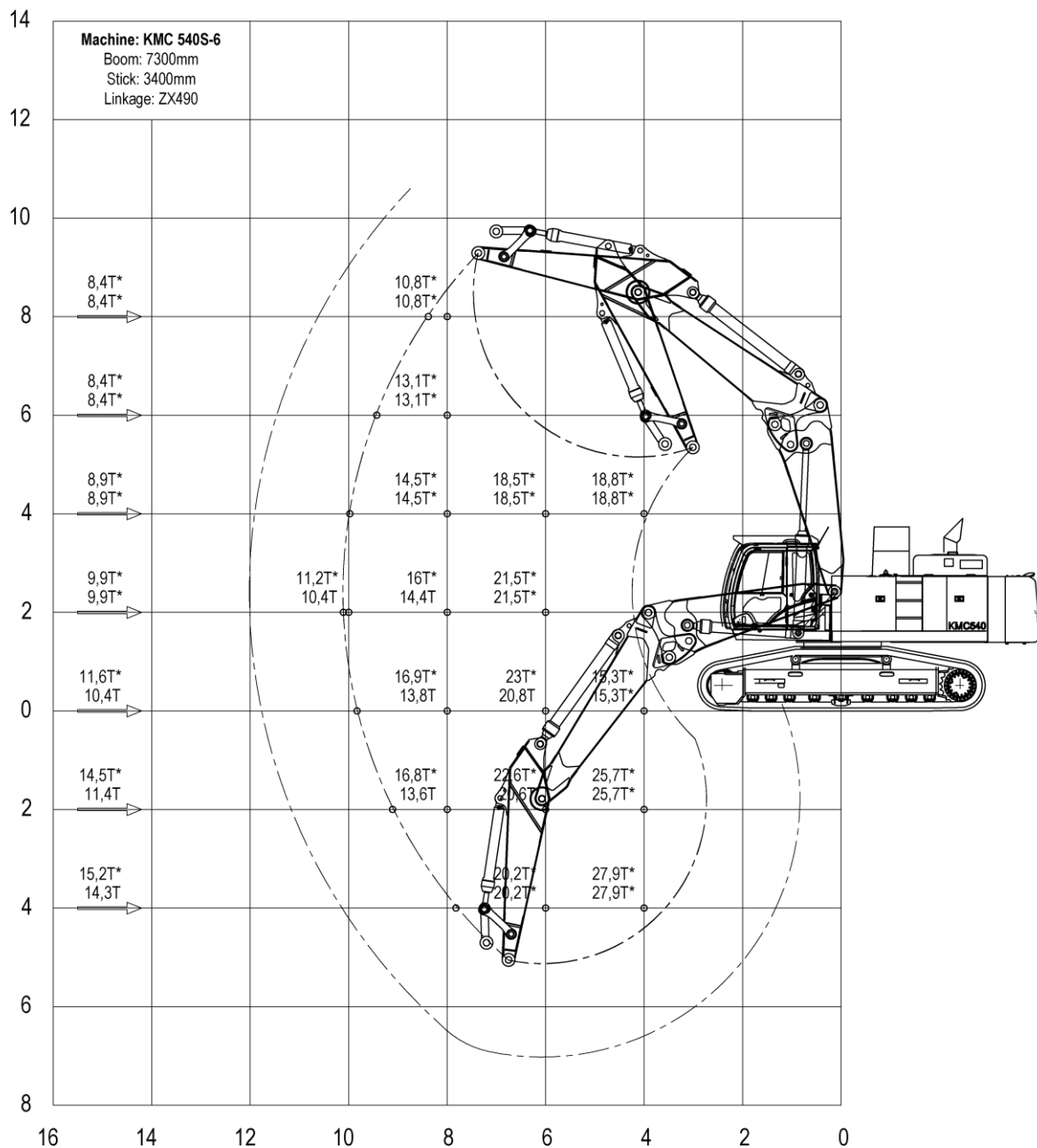
The numbers with a * indicates 87% of the hydraulic capacity, the remaining numbers 75% of the tipping load.

The left column shows the load at max. reach of the machine.

The above loads are in compliance with ISO 10567 hydraulic excavator lift capacity standard. Weight of all lifting accessories must be deducted from the above lifting capacities. The use of a work tool attachment point to handle/lift objects, could affect the machine lift performance. Lifting capacities are based on the machine standing on a firm, uniform supporting surface. Specifications are subject to change without notice.

Bent Boom

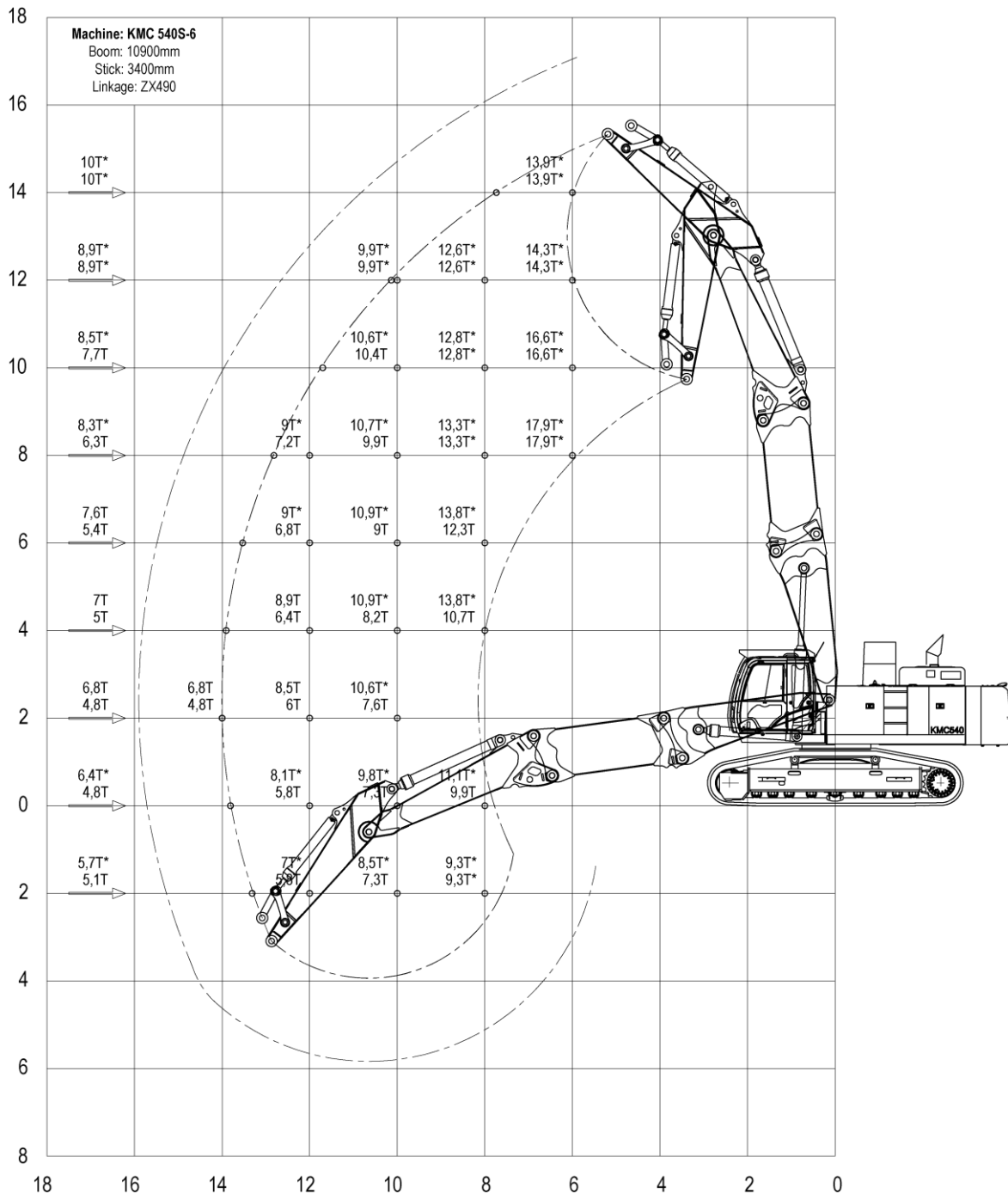
KTEG



The upper number indicates the maximum load over the front, the lower number over the side.
 The numbers with a * indicates 87% of the hydraulic capacity, the remaining numbers 75% of the tipping load.
 The left column shows the load at max. reach of the machine.
 The above loads are in compliance with ISO 10567 hydraulic excavator lift capacity standard. Weight of all lifting accessories must be deducted from the above lifting capacities. The use of a work tool attachment point to handle/lift objects, could affect the machine lift performance. Lifting capacities are based on the machine standing on a firm, uniform supporting surface. Specifications are subject to change without notice.

Straight Boom + Ext.

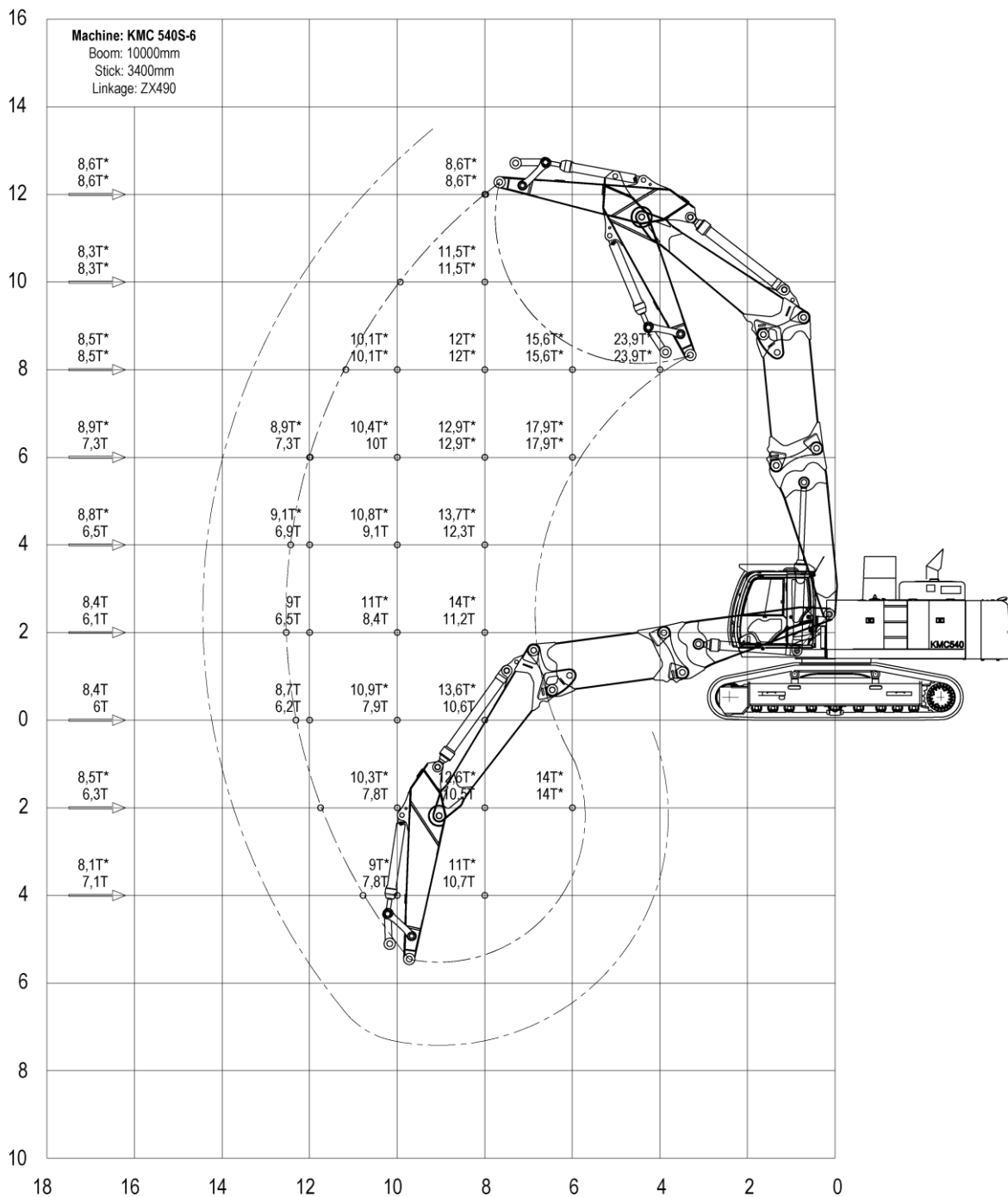
KTEG



The upper number indicates the maximum load over the front, the lower number over the side.
 The numbers with a * indicates 87% of the hydraulic capacity, the remaining numbers 75% of the tipping load.
 The left column shows the load at max. reach of the machine.
 The above loads are in compliance with ISO 10567 hydraulic excavator lift capacity standard. Weight of all lifting accessories must be deducted from the above lifting capacities. The use of a work tool attachment point to handle/lift objects, could affect the machine lift performance. Lifting capacities are based on the machine standing on a firm, uniform supporting surface. Specifications are subject to change without notice.

Bent Boom + Ext.

KTEG

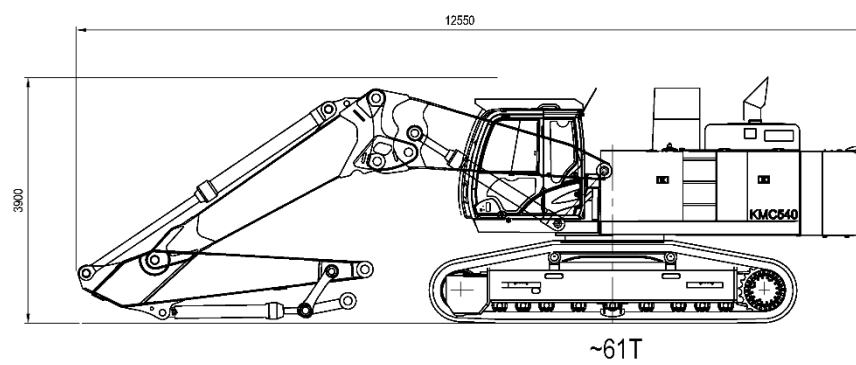
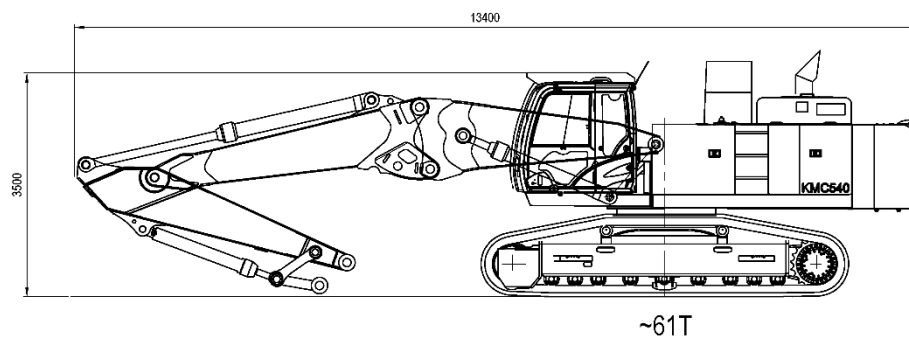
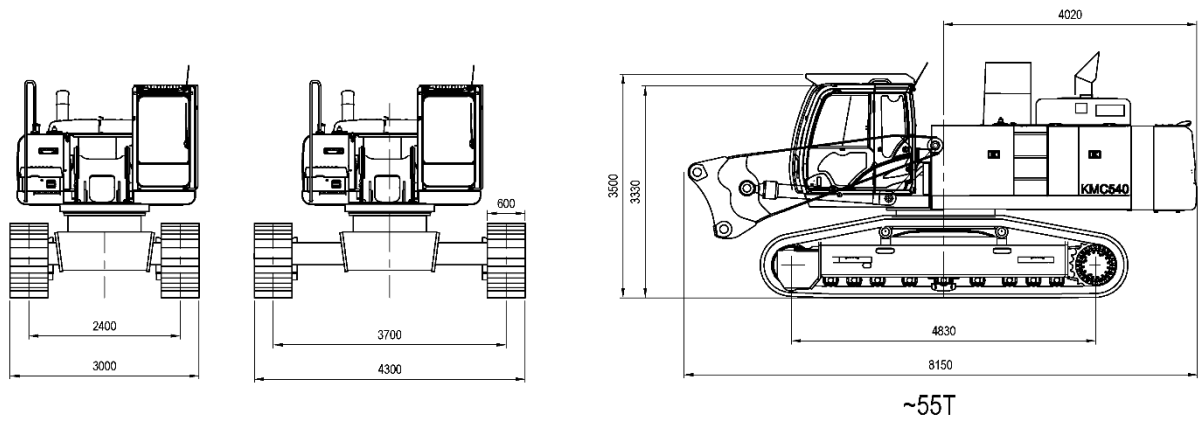


The upper number indicates the maximum load over the front, the lower number over the side.

The numbers with a * indicates 87% of the hydraulic capacity, the remaining numbers 75% of the tipping load.

The left column shows the load at max. reach of the machine.

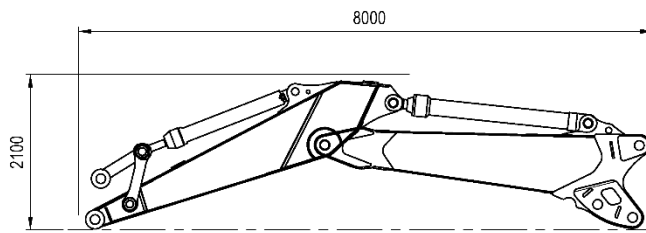
The above loads are in compliance with ISO 10567 hydraulic excavator lift capacity standard. Weight of all lifting accessories must be deducted from the above lifting capacities. The use of a work tool attachment point to handle/lift objects, could affect the machine lift performance. Lifting capacities are based on the machine standing on a firm, uniform supporting surface. Specifications are subject to change without notice.



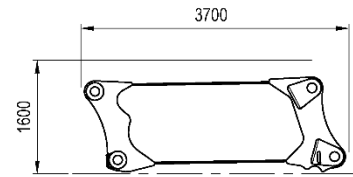
Specifications are subject to change without notice.

Transport

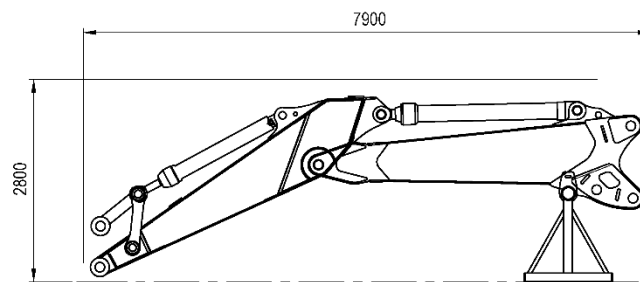
KTEG



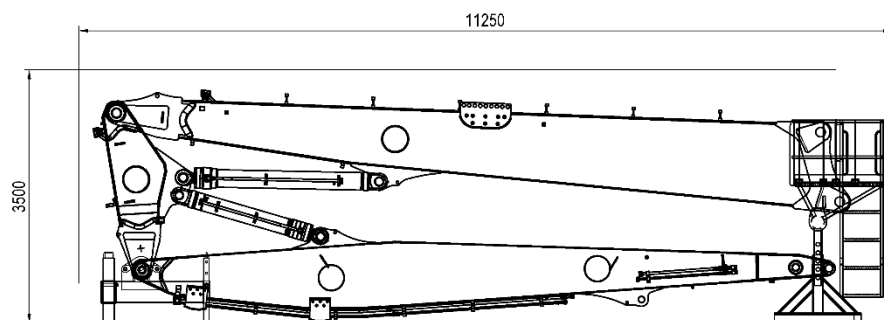
6,5T
Short boom



3T
Extension



7T
Short boom



12T
27m height

Specifications are subject to change without notice.

KTEG GmbH
Baindter Strasse 29
88255 Baienfurt / Germany

Tel.: +49 751 5004-0

KMC540S_V200207