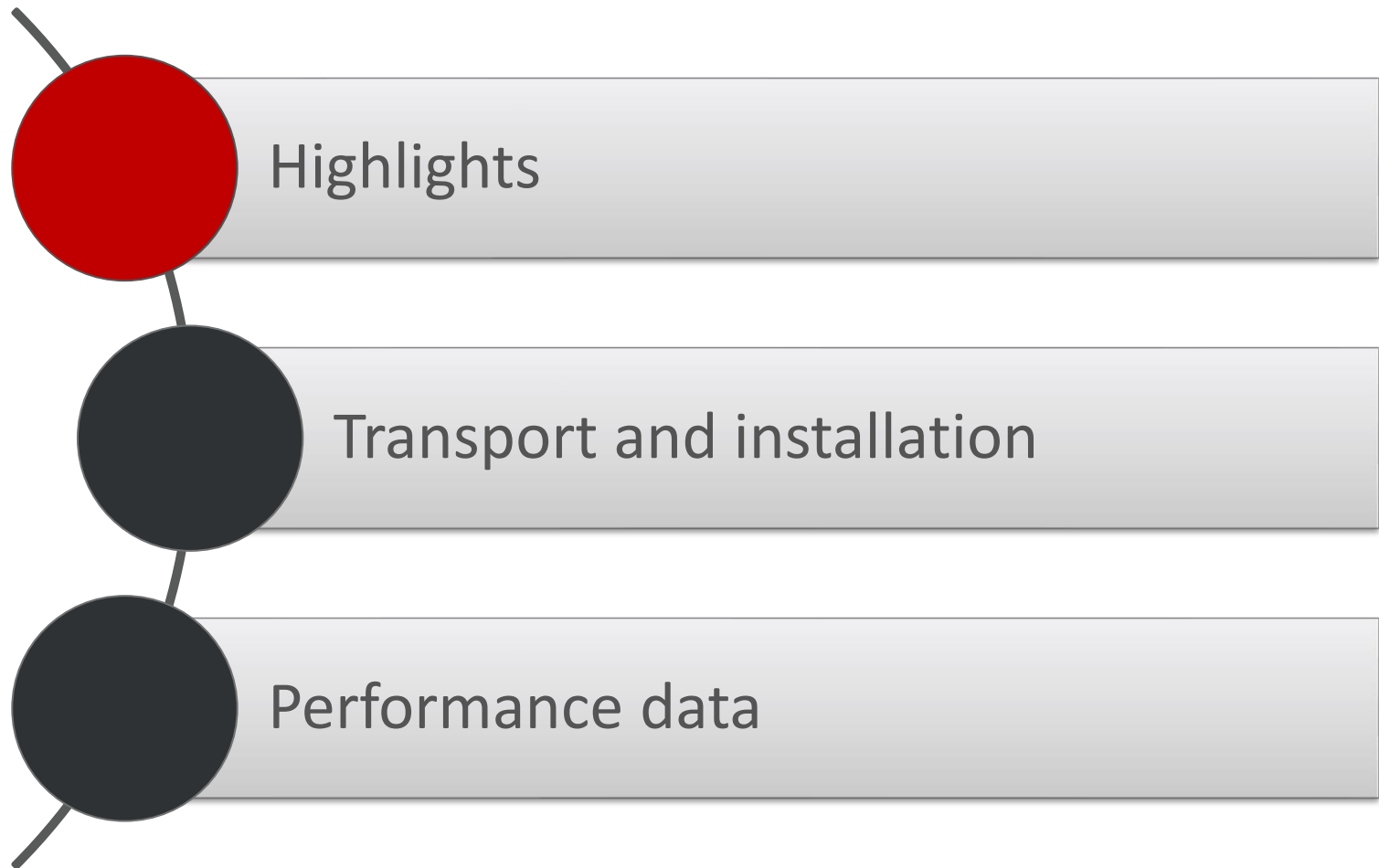


KTEG

HITACHI Systempartner.



KMC1600S Highlights

Boom Quick Connect system



Example Interchangeability

- › After 10.000 operating hours, there is the wish for a new machine
- › The two fronts, which have only 5.000 hours each can be kept
- › Only new base machine necessary
- › **Lower cost of ownership over a long time period**

- › KTEG Standard Quick Connect system (SQC)
 - › Hydraulic in-pin cylinders to connect the front hydraulically
 - › Mechanical connection of the hydraulic lines by hand
- › Multi-Carrier Concept
 - › Boom change **within one hour**
 - › Flexibility to be up to any task
 - › Productivity on every height level
 - › Interchangeability with new fronts

Example flexibility

- › Demolition with High-Reach front in the morning
- › Sorting of material in the afternoon

KMC1600S Highlights

Undercarriage



- › Perfect stability, thanks to the nearly square footprint (best in class)
- › Track frames removable for transport
- › Bolting of the track frames hydraulically



KMC1600S Highlights

Counterweight

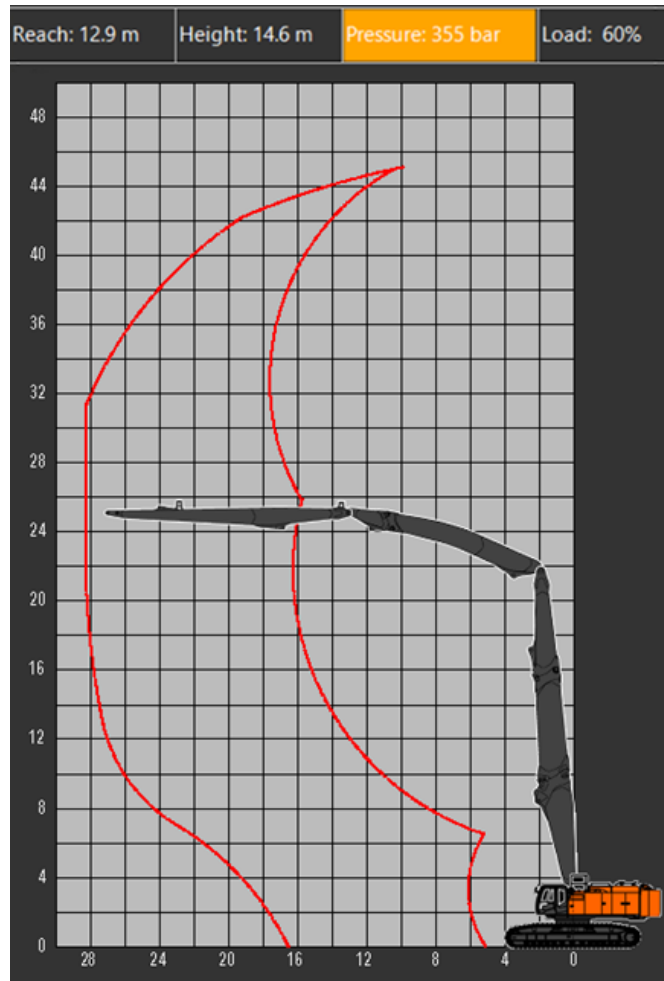


- › 40 t counterweight for heavy front attachments
- › Removable hydraulically for transport



KMC1600S Highlights

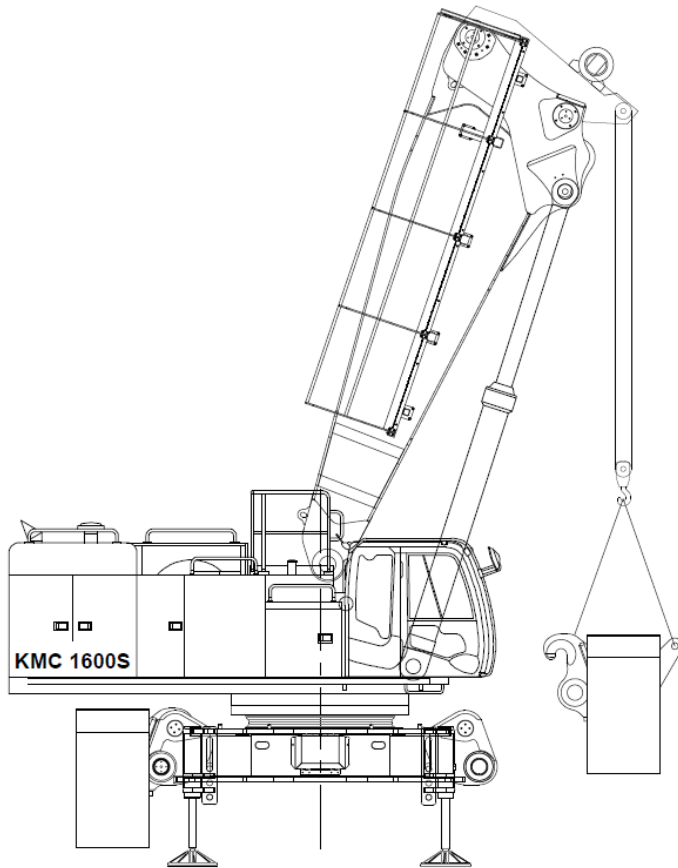
LMI



- › Display inside the cabin to show the current boom position
- › Warning, if the machine is operated out of allowed range
- › Avoiding misuse of the machine

KMC1600S Highlights

Transport and installation concept



- › Autonomous installation
- › No crane necessary
- › Easy transportation due to removable of heavy parts
- › Outriggers to be controlled via remote control

KMC1600S Highlights

Flagship effect



Liked by **tobias151281** and **1,623 others**

hagedornunternehmensgruppe DA IST ER
Ab heute begrüßen wir den „neuen“ im Team. Mit 230
Tonnen Gesamtgewicht ist er der schwerste
Abbruchbagger Deutschlands 🤖
Wir versorgen euch natürlich bald mit weiteren Infos
und Fotos von dem Großen.

#hagedorn #hagedornunternehmensgruppe
#gemeinsamnachvorne #wirhabendengrößten #kmc
#bigmachine #kraftwerk #machiefans
#machinesofinstagram #schwertransport
#langereise #hagedornmachts #kieselwerk #lünen
#ruhrpott #schwerlast #transport #bagger
#baggerfans #long #baggerfahrer
#deutschlandsgrößter #wirhabenihn #ganzerstolz
#kmc1600s

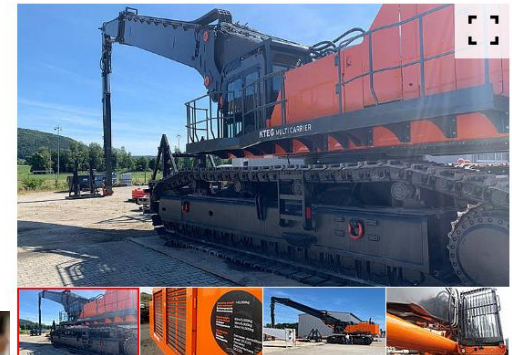
[View all 41 comments](#)

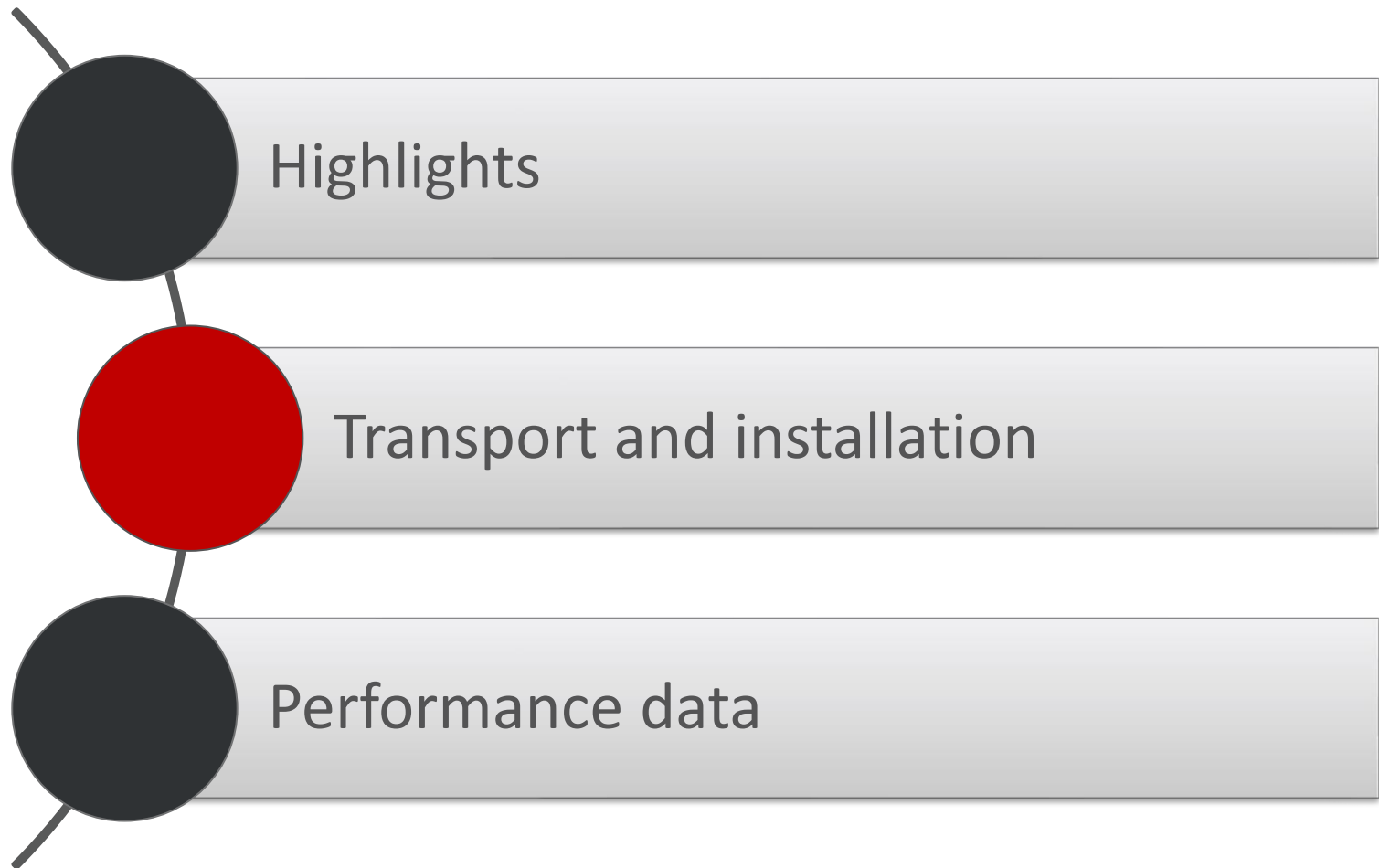
- › High grade of interest on social media as Facebook, Instagram, Youtube,...
- › Huge advertising effect

27. Februar 2020 – Gütersloh

HAGEDORN KAUFTE 230 TONNEN DEMOLITION BAGGER

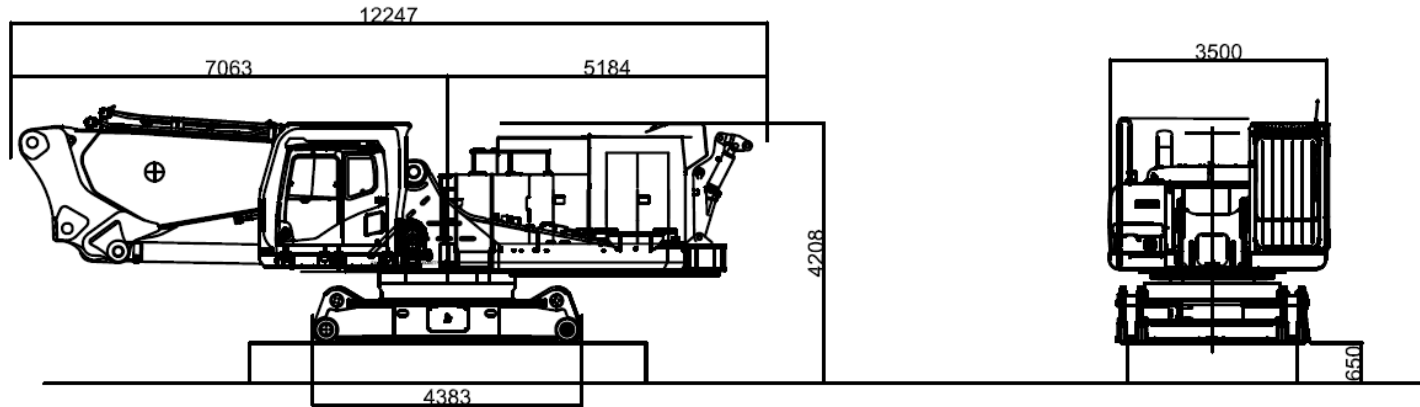
HAGEDORN UND KIESEL KONZIPIEREN
NEUE GRÖSSENORDNUNG





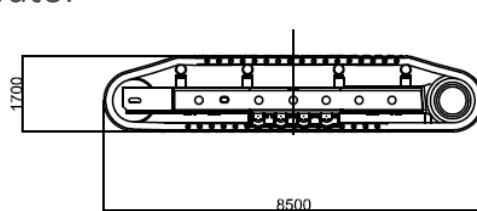
KMC1600S

Transport and installation concept

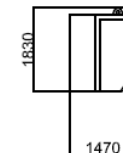
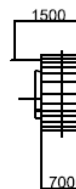


Upperstructure turned 90°
against driving direction of
excavator

Transport weight base machine 78 t



Transport weight track frames 2 x 22 t



Transport weight counterweight 40 t

4 transport units for base machine in total

KMC1600S

Impression of installation track frame mounting

Track frames
connected and
bolted
hydraulically

outtriggers
lowered

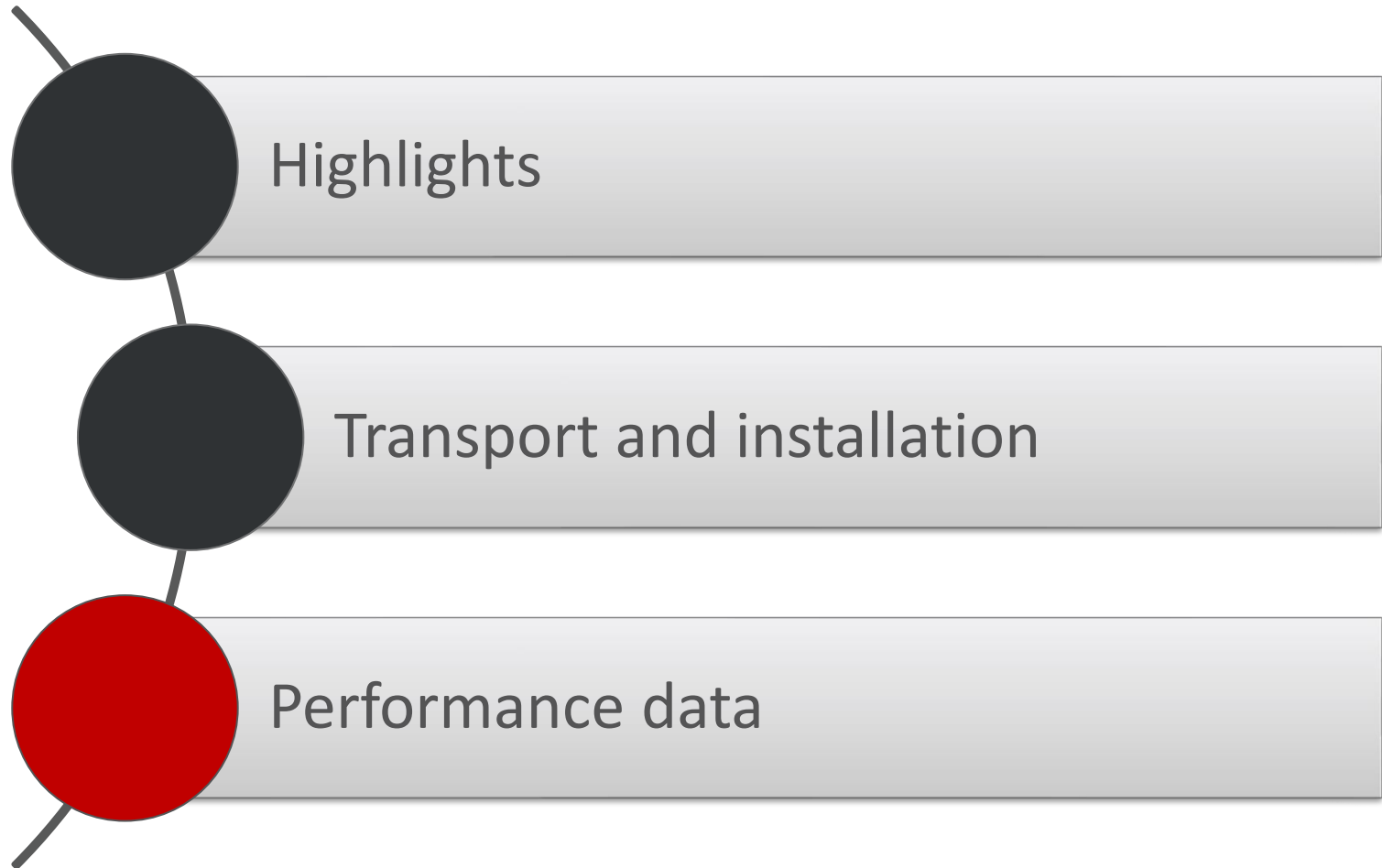


KMC1600S

Impression of installation – Counterweight lifting system

Counterweight
lifting system





KMC1600S

Front end attachments overview

KMC1600S		
Front end attachment	height [m]	max. attachable tool weight incl. quick coupler [t]
THR 60	60	3
HR30	30	12
HR21	21	25



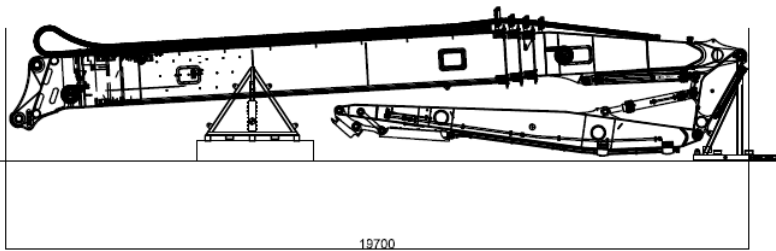
High grade of flexibility

Strong performance on every height level

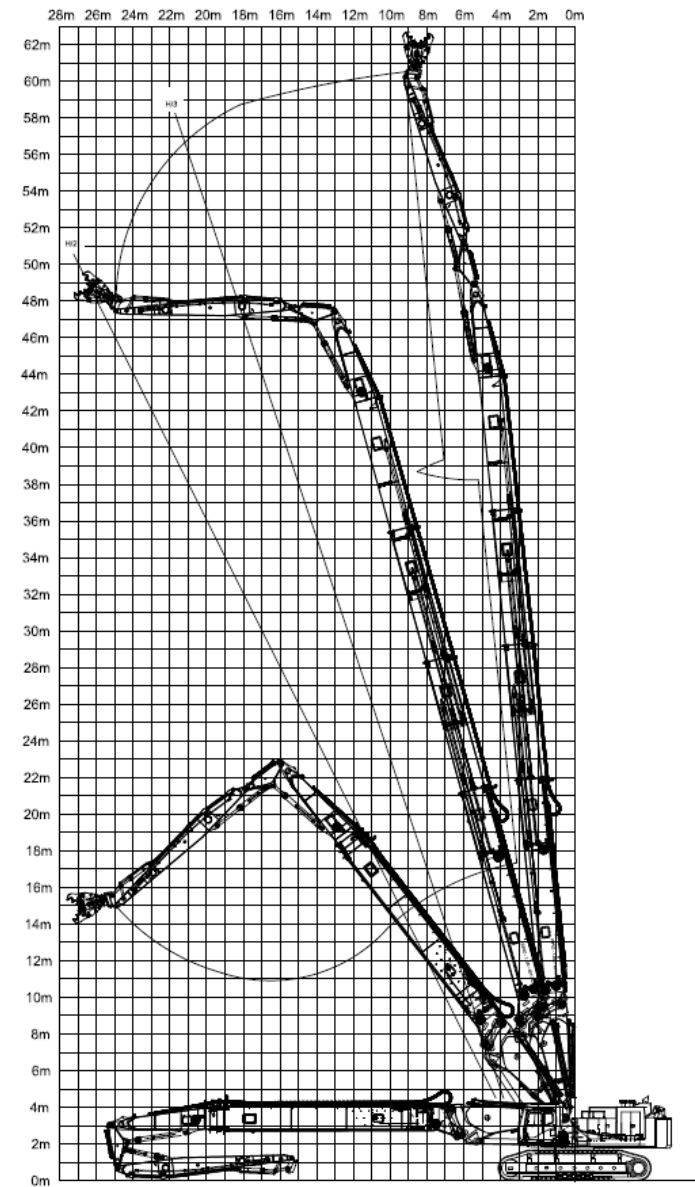
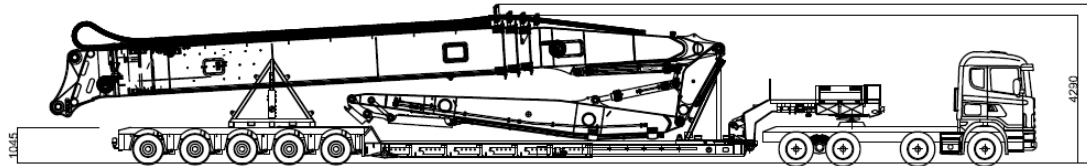
KMC1600S

Tele High Reach 60

- Pin-Height 60 m
- Tool weight incl. Quick coupler 3 t
- Linkage cinematic ZX350



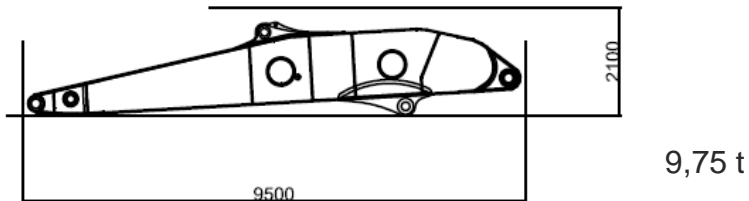
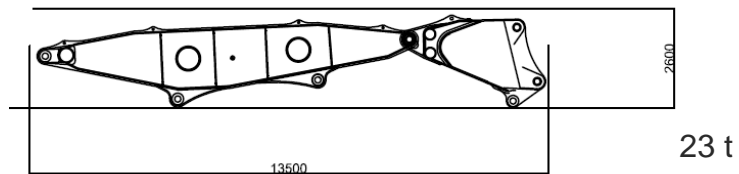
47 t



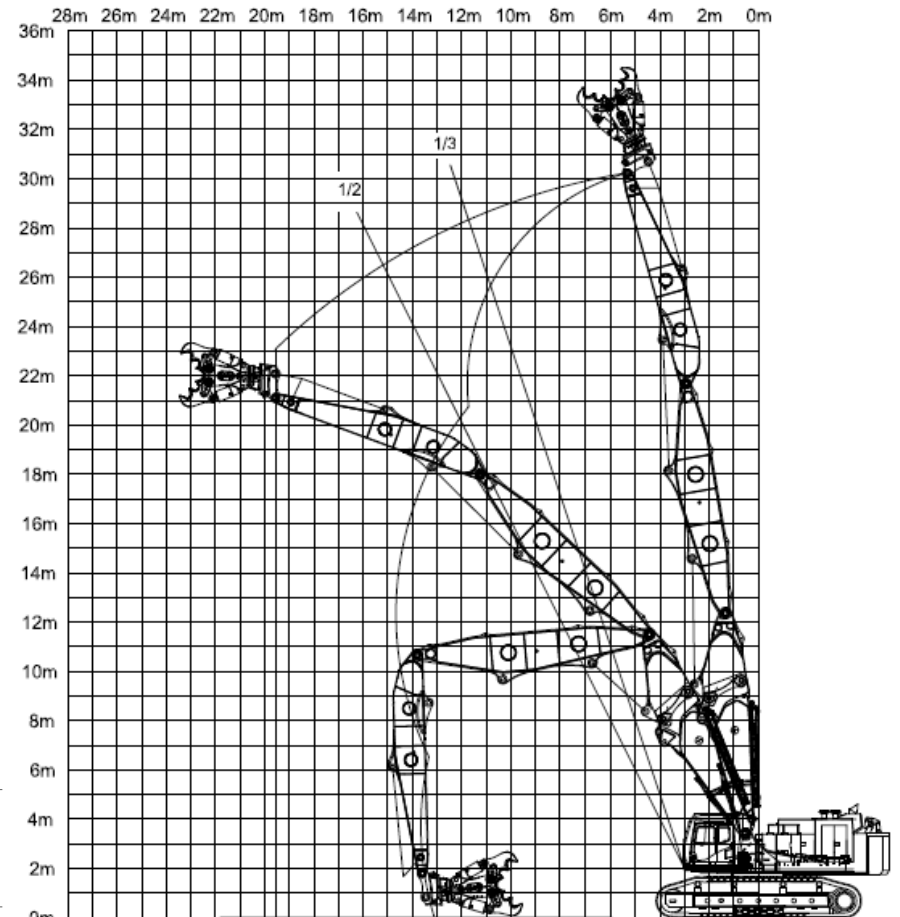
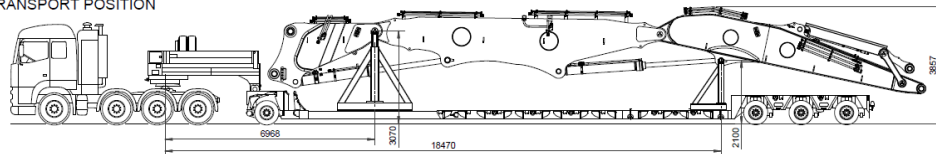
KMC1600S

Modular 3-Piece-Front

- Pin-Height 30 m
- Tool weight incl. Quick coupler 12 t
- Linkage cinematic EX1200



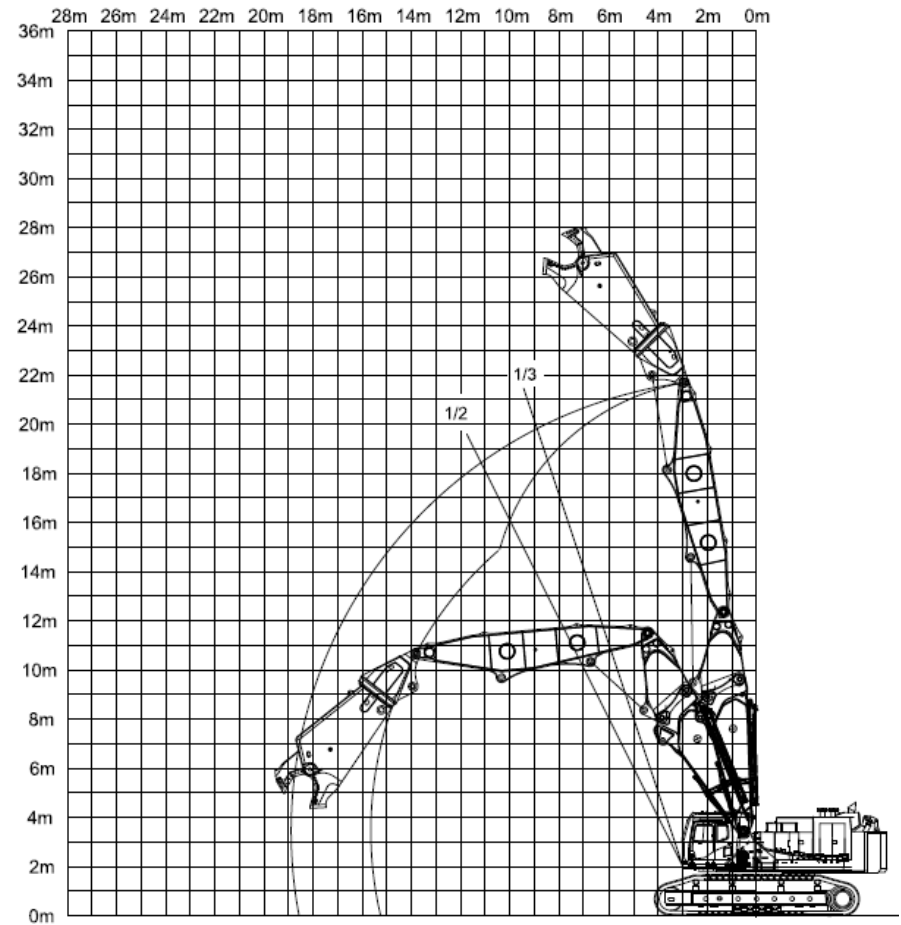
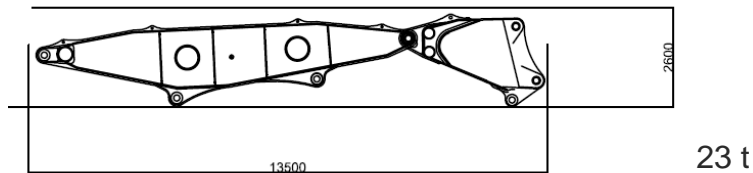
TRANSPORT POSITION



KMC1600S

Modular 3-Piece-Front

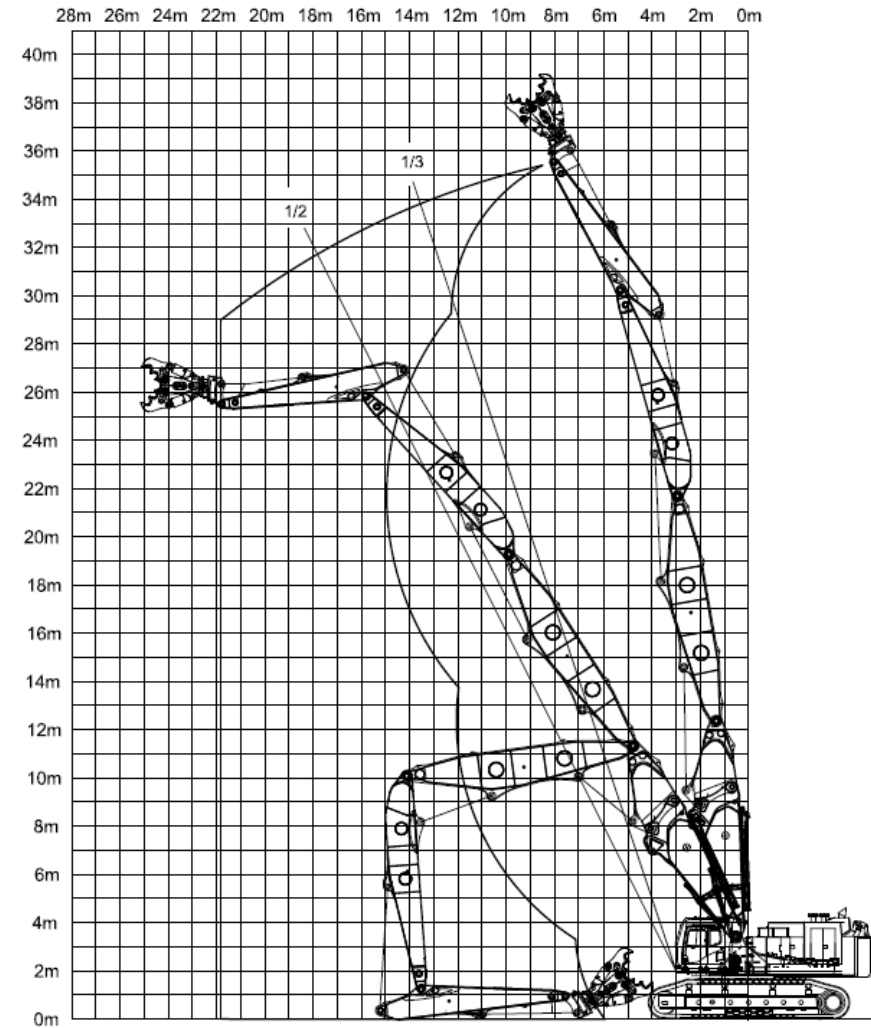
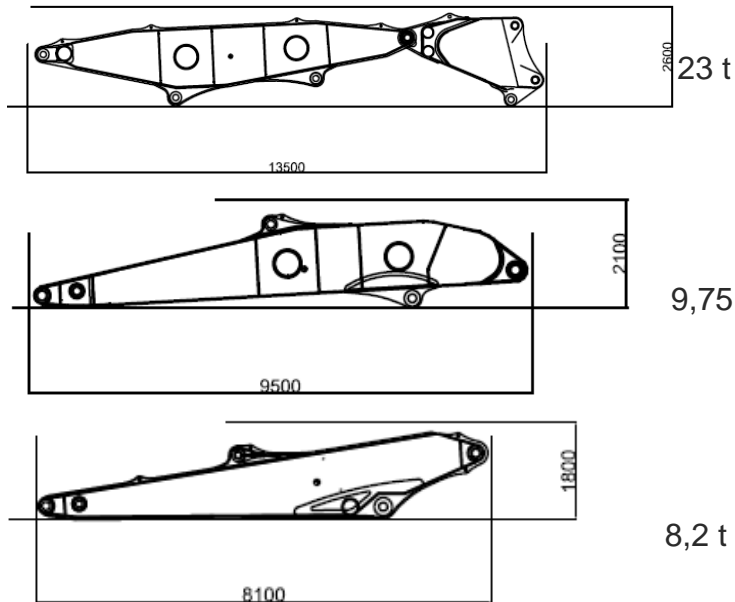
- Dismounted stick
- Pin-Height 21 m
- Tool weight 25 t



KMC1600S

Option: Extending of the 3-Piece-Front

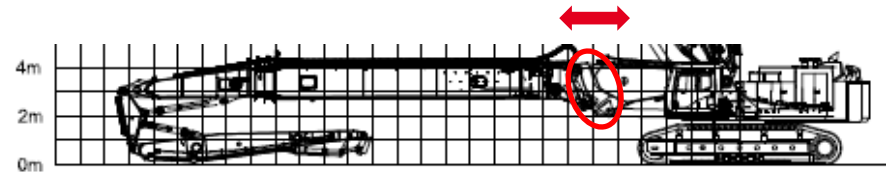
- Extending of the 3 piece front with additional stick
- Modular 4 piece front
- Pin-Height 35 m
- Tool weight incl. Quick coupler 7 t
- Linkage cinematic ZX490



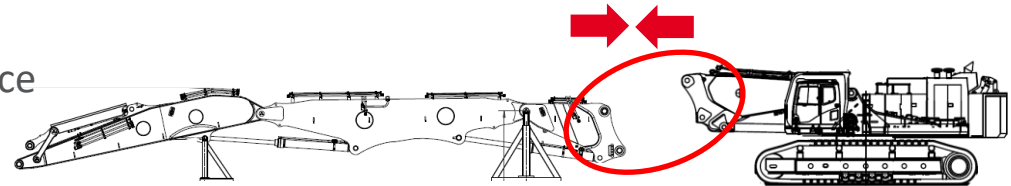
KMC1600S

Procedure to install additional stick for 35 m configuration

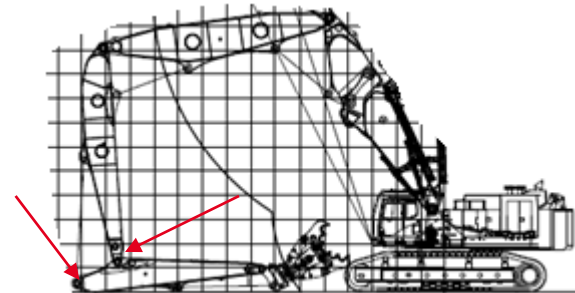
- › Dismounting THR60



- › Mounting 3 Piece front with SQC interface



- › Mounting additional stick separately
 - › Pins to connect stick and cylinder manually
 - › Connection of hydraulic lines with leak less couplings



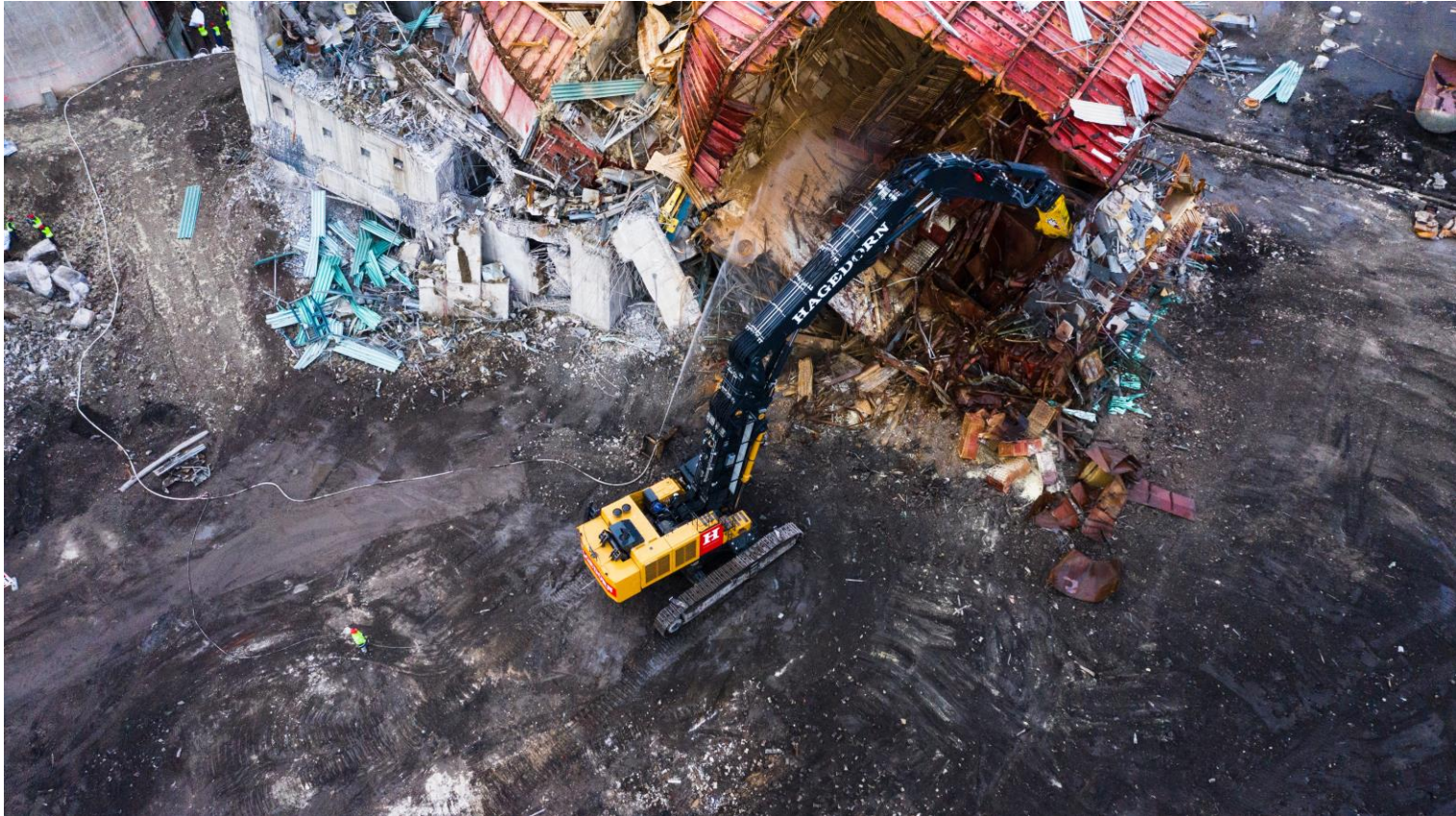
KMC1600S

Impressions



KMC1600S

Impressions



Transport

[\(846\) KMC 1600 S SCHWERTRANSPORT VON HAGEDORN - YouTube](#)

Working

[\(846\) KMC 1600S: Deutschlands größter Abrissbagger \(250t\) | Hagedorn Unternehmensgruppe | Kraftwerk Lünen – YouTube](#)

[\(846\) Deutschlands größter Abriss-Bagger KMC1600S – YouTube](#)

[\(846\) Deutschlands größter Abbruchbagger - KMC1600S - YouTube](#)