

# KMC 380S-6

# KTEG



## Engine

Engine model: Isuzu AQ-6HK1X  
Net Power – ISO14396:  
202 kW (271 hp)

## Weight

Operating weight including  
demolition front:  
approximately 50.000 kg

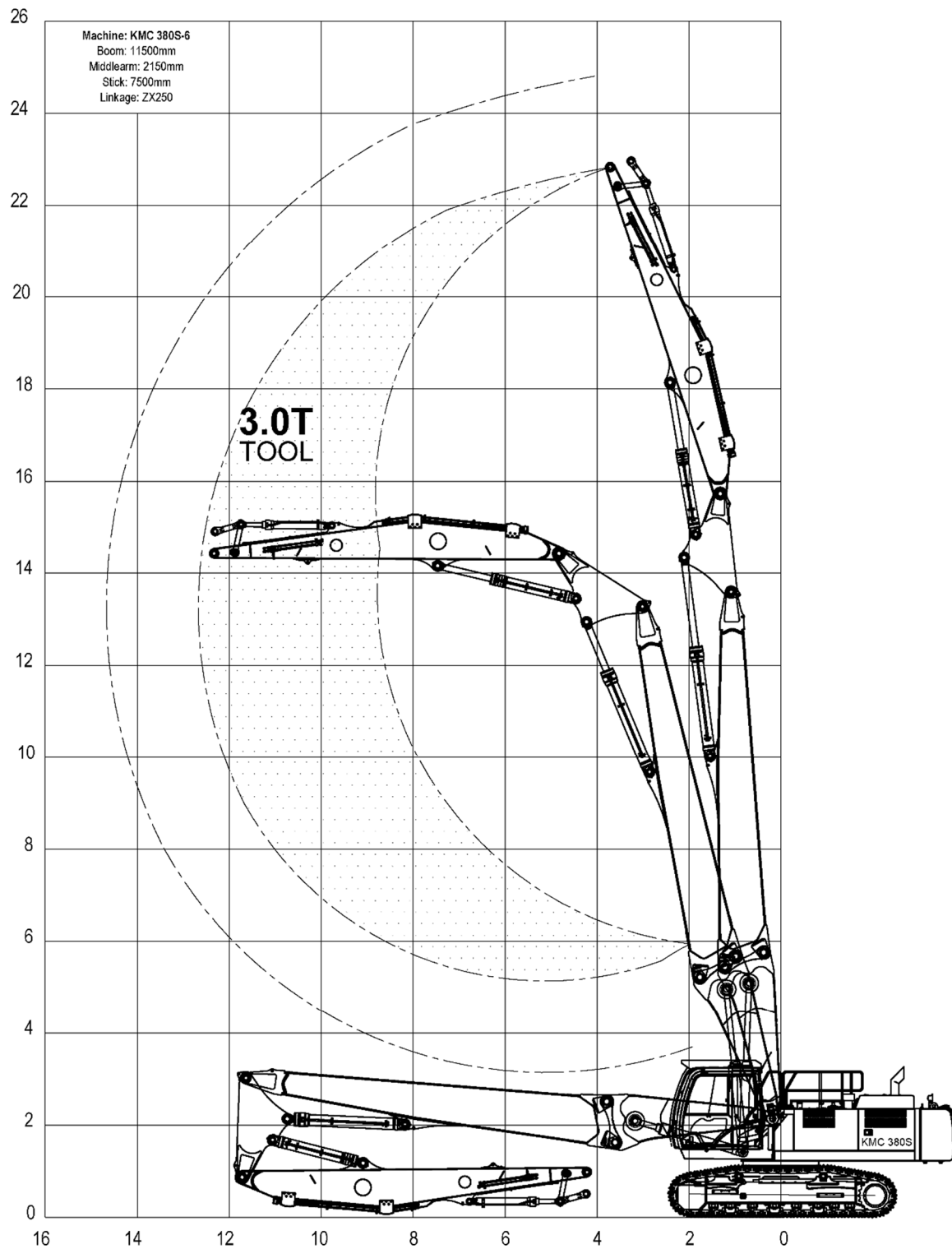
## Working height

Maximum pin height:  
23 meters  
Maximum safe working height:  
20.5 meters

# Demolition front

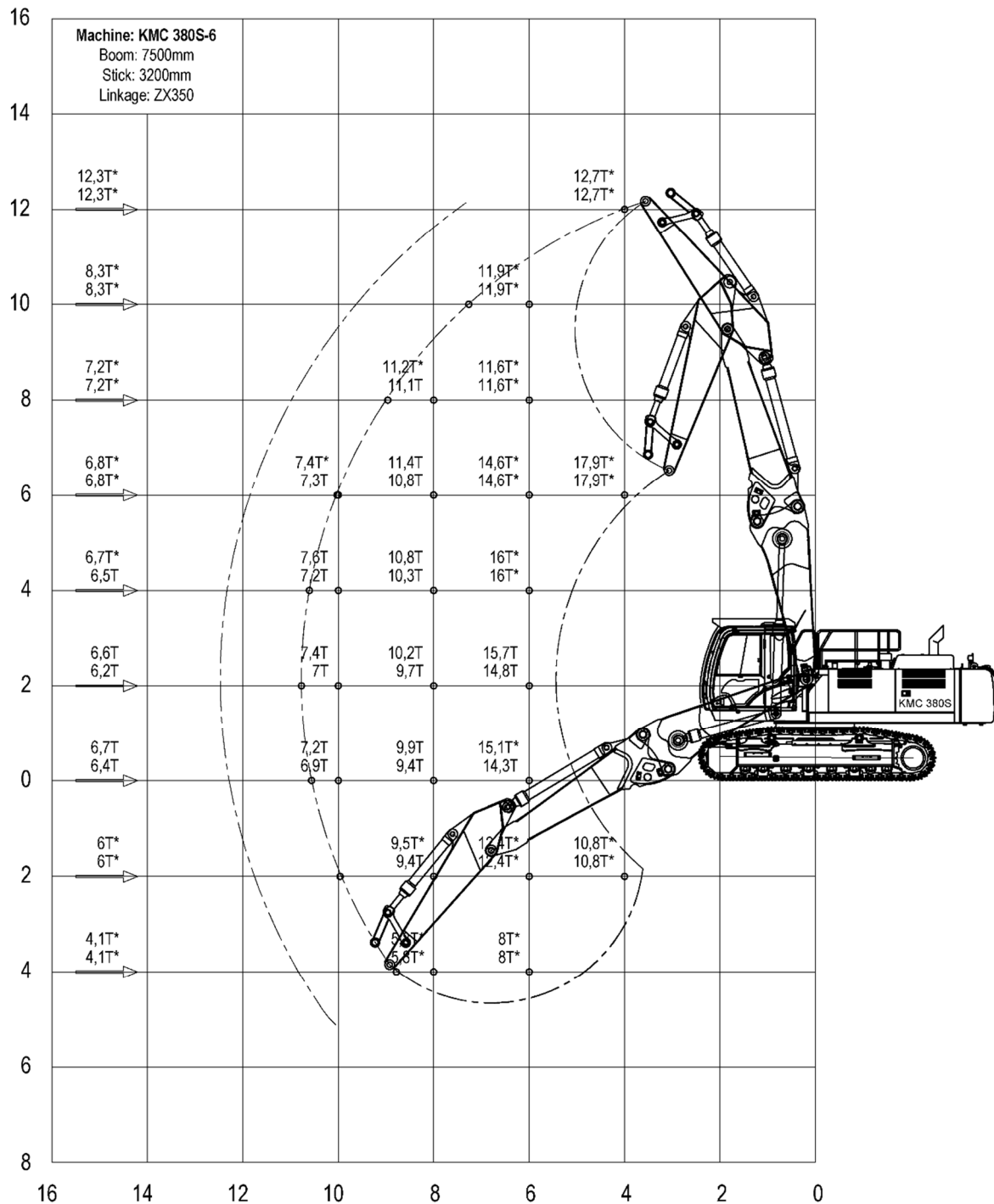
Pin height 23 meters

# KTEG



# Straight Boom

# KTEG



Preliminary

Configuration: Base machine with extendable undercarriage.

The upper number indicates the maximum load over the front, the lower number over the side.

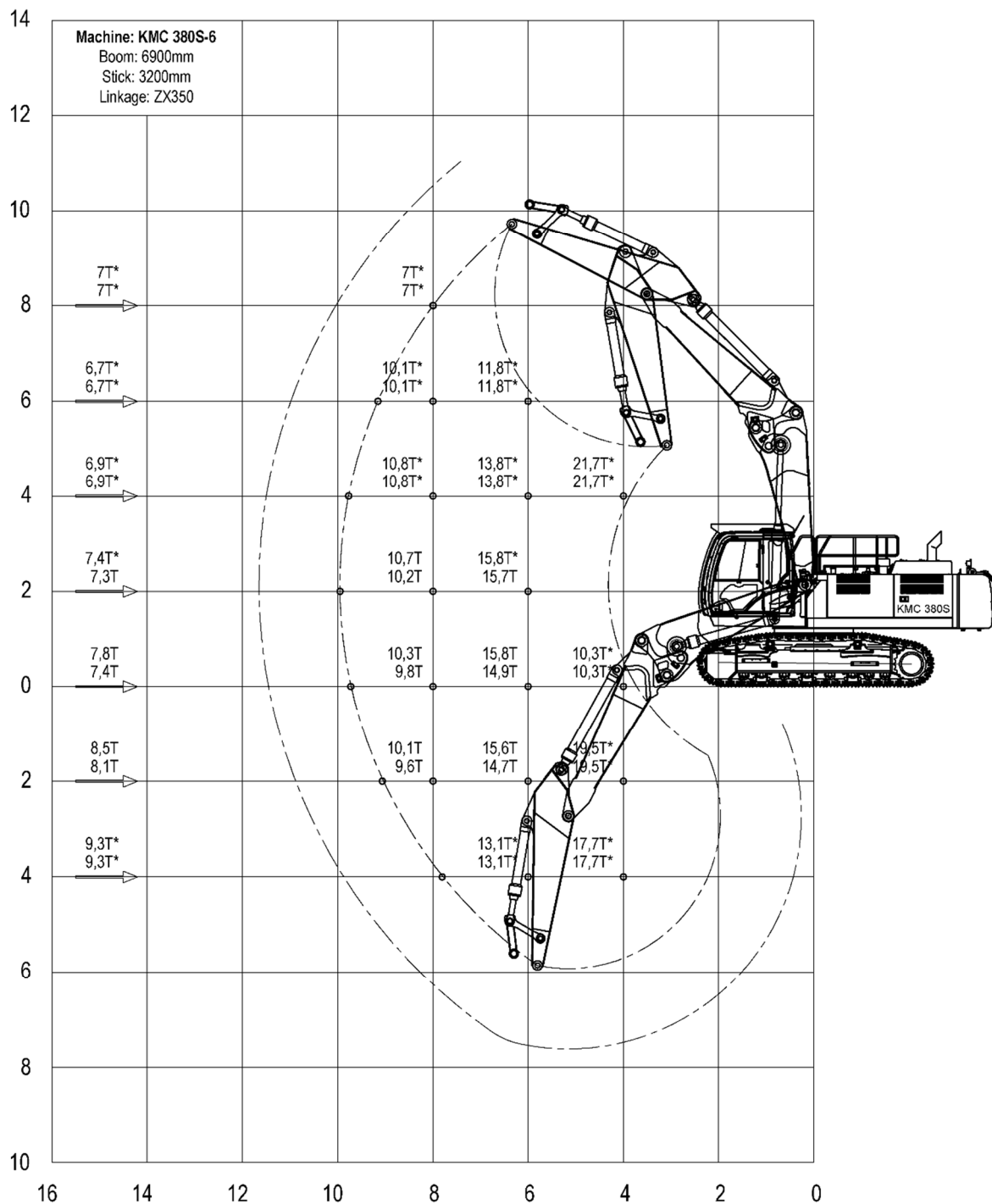
The numbers with a \* indicates 87% of the hydraulic capacity, the remaining numbers 75% of the tipping load.

The left column shows the load at max. reach of the machine.

The above loads are in compliance with ISO 10567 hydraulic excavator lift capacity standard. Weight of all lifting accessories must be deducted from the above lifting capacities. The use of a work tool attachment point to handle/lift objects, could affect the machine lift performance. Lifting capacities are based on the machine standing on a firm, uniform supporting surface. Specifications are subject to change without notice.

# Bent Boom

# KTEG



Preliminary

Configuration: Base machine with extendable undercarriage.

The upper number indicates the maximum load over the front, the lower number over the side.

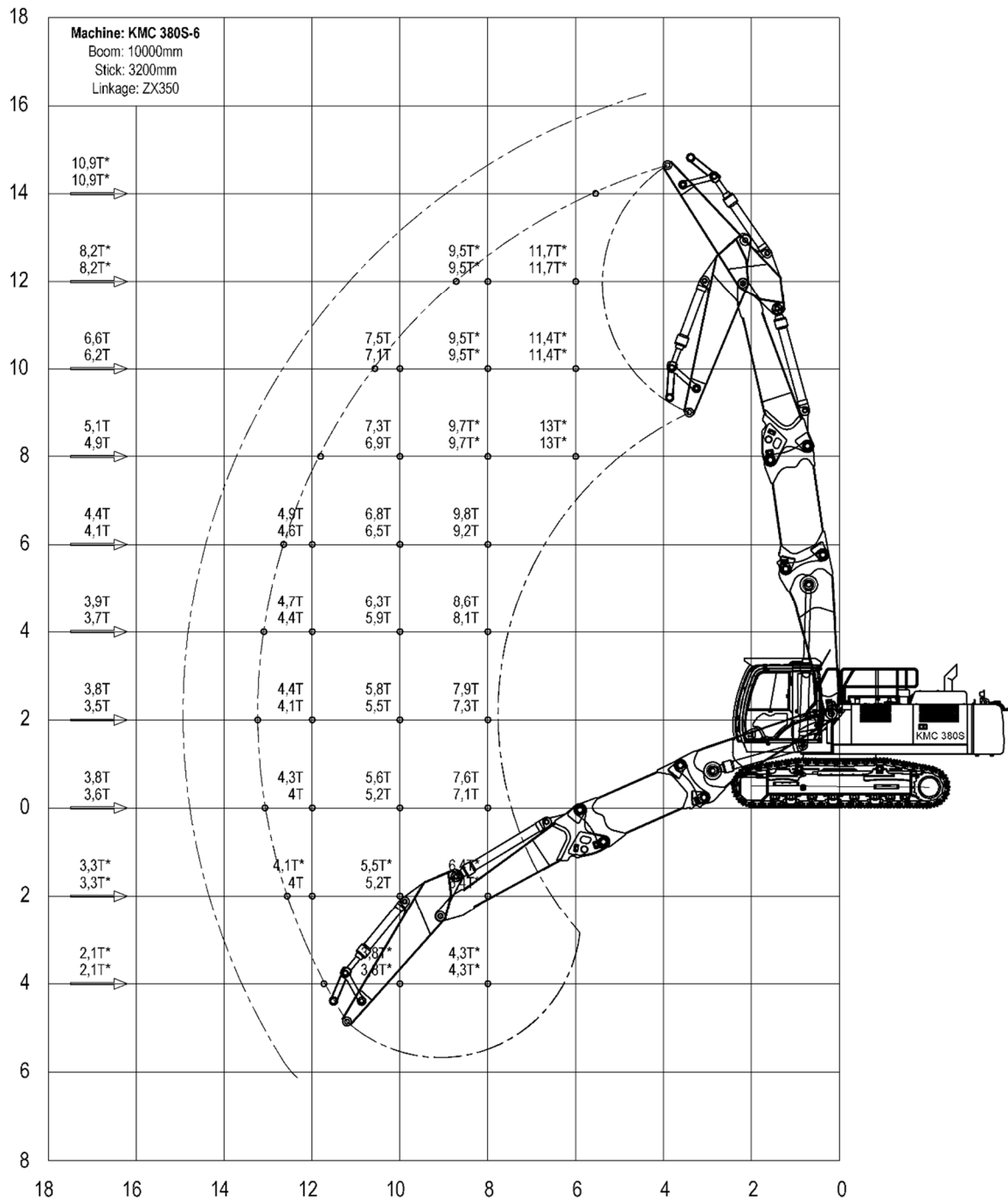
The numbers with a \* indicates 87% of the hydraulic capacity, the remaining numbers 75% of the tipping load.

The left column shows the load at max. reach of the machine.

The above loads are in compliance with ISO 10567 hydraulic excavator lift capacity standard. Weight of all lifting accessories must be deducted from the above lifting capacities. The use of a work tool attachment point to handle/lift objects, could affect the machine lift performance. Lifting capacities are based on the machine standing on a firm, uniform supporting surface. Specifications are subject to change without notice.

# Straight Boom + Ext.

# KTEG



Preliminary

Configuration: Base machine with extendable undercarriage.

The upper number indicates the maximum load over the front, the lower number over the side.

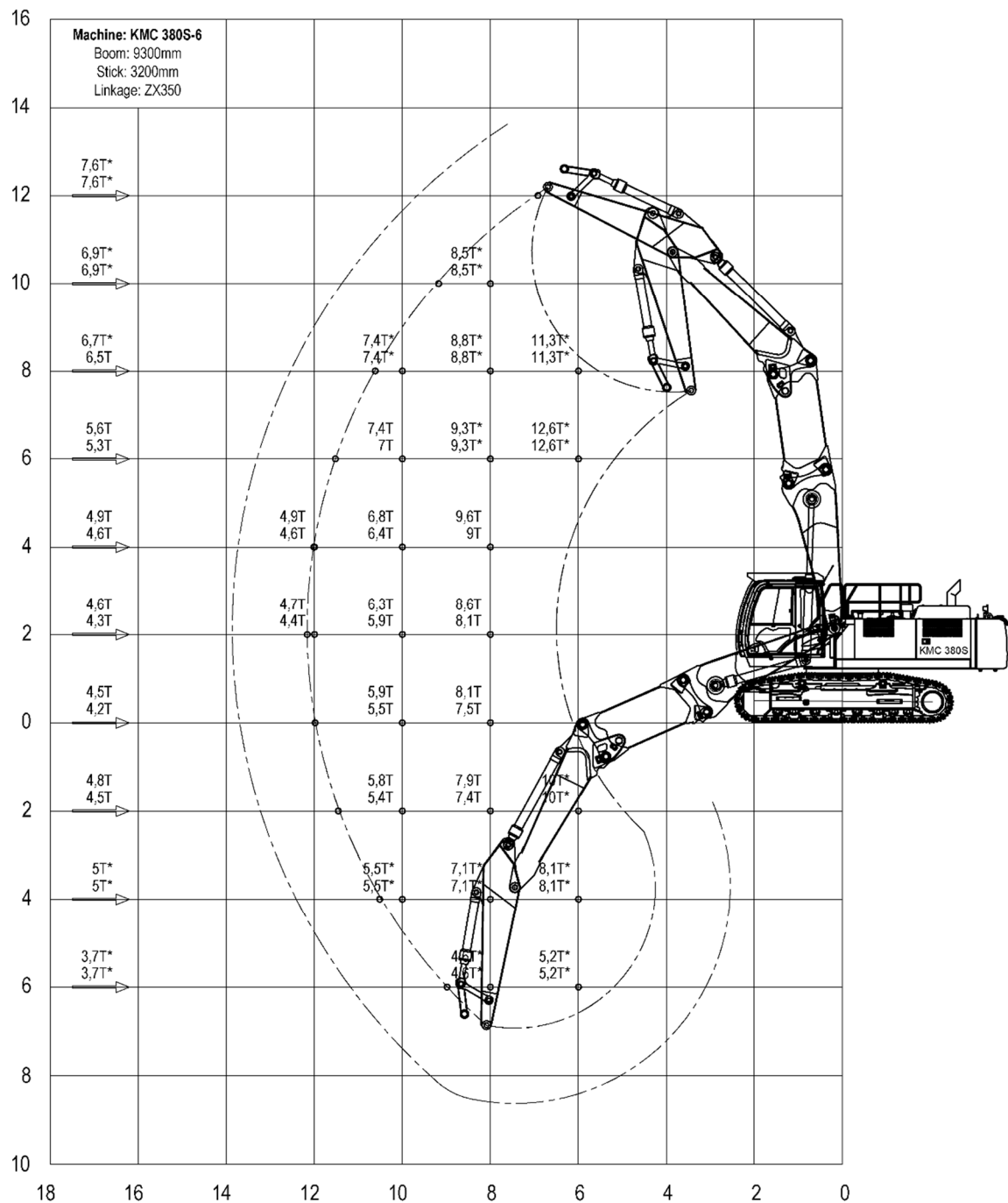
The numbers with a \* indicates 87% of the hydraulic capacity, the remaining numbers 75% of the tipping load.

The left column shows the load at max. reach of the machine.

The above loads are in compliance with ISO 10567 hydraulic excavator lift capacity standard. Weight of all lifting accessories must be deducted from the above lifting capacities. The use of a work tool attachment point to handle/lift objects, could affect the machine lift performance. Lifting capacities are based on the machine standing on a firm, uniform supporting surface. Specifications are subject to change without notice.

# Bent Boom + Ext.

# KTEG



Preliminary

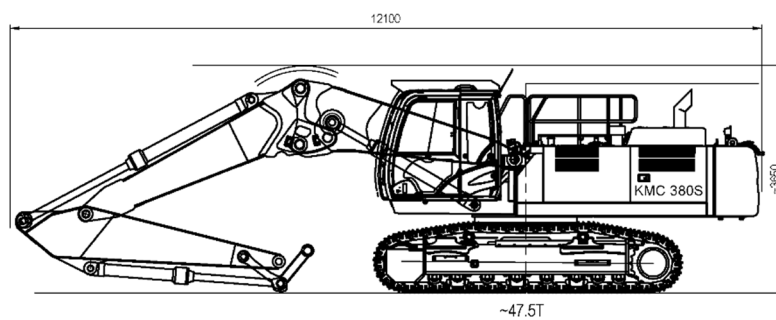
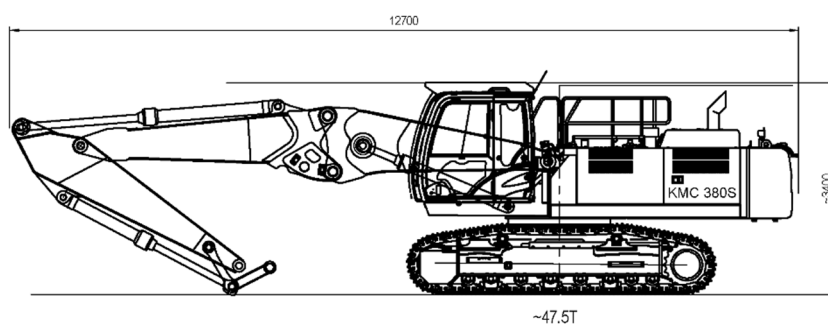
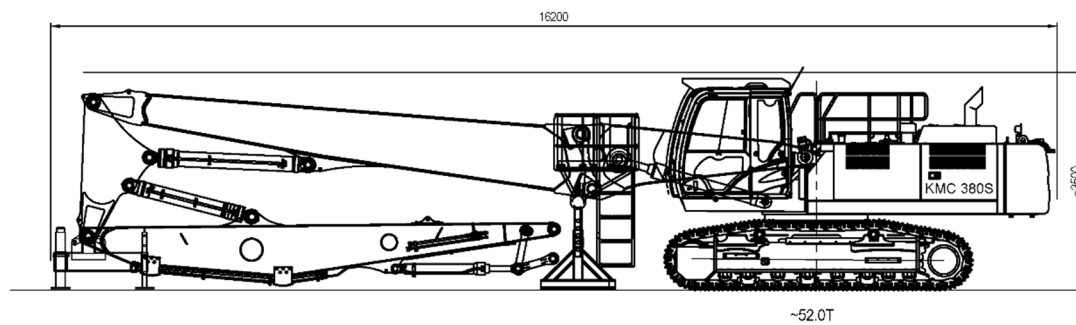
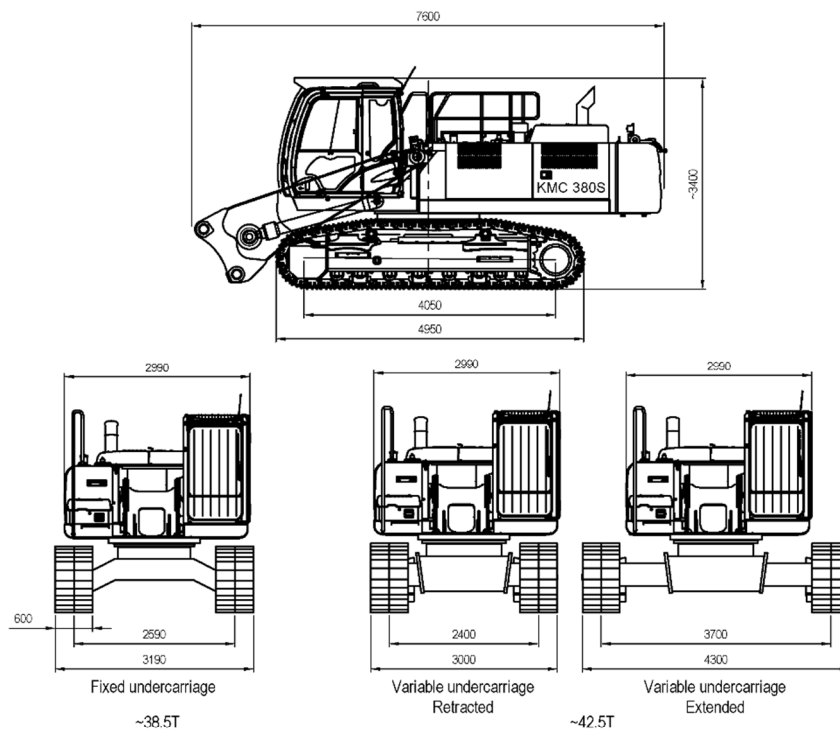
Configuration: Base machine with extendable undercarriage.

The upper number indicates the maximum load over the front, the lower number over the side.

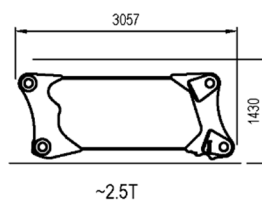
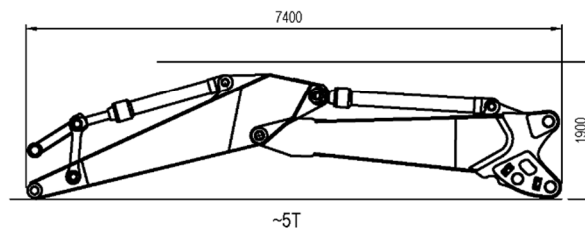
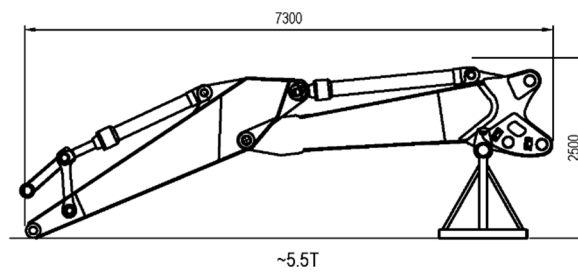
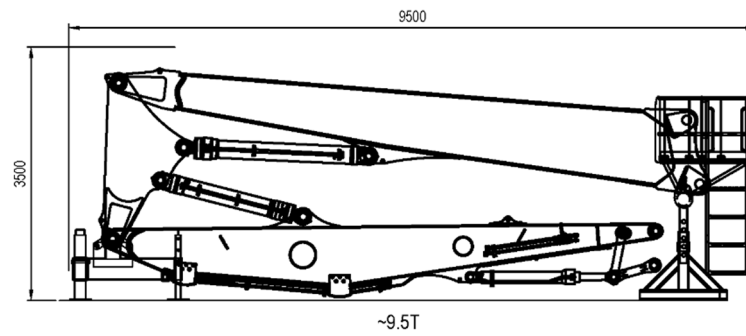
The numbers with a \* indicates 87% of the hydraulic capacity, the remaining numbers 75% of the tipping load.

The left column shows the load at max. reach of the machine.

The above loads are in compliance with ISO 10567 hydraulic excavator lift capacity standard. Weight of all lifting accessories must be deducted from the above lifting capacities. The use of a work tool attachment point to handle/lift objects, could affect the machine lift performance. Lifting capacities are based on the machine standing on a firm, uniform supporting surface. Specifications are subject to change without notice.



Preliminary



Preliminary